

AIP SVERIGE/SWEDEN

**INSTRUMENT
APPROACH
CHART - ICAO**

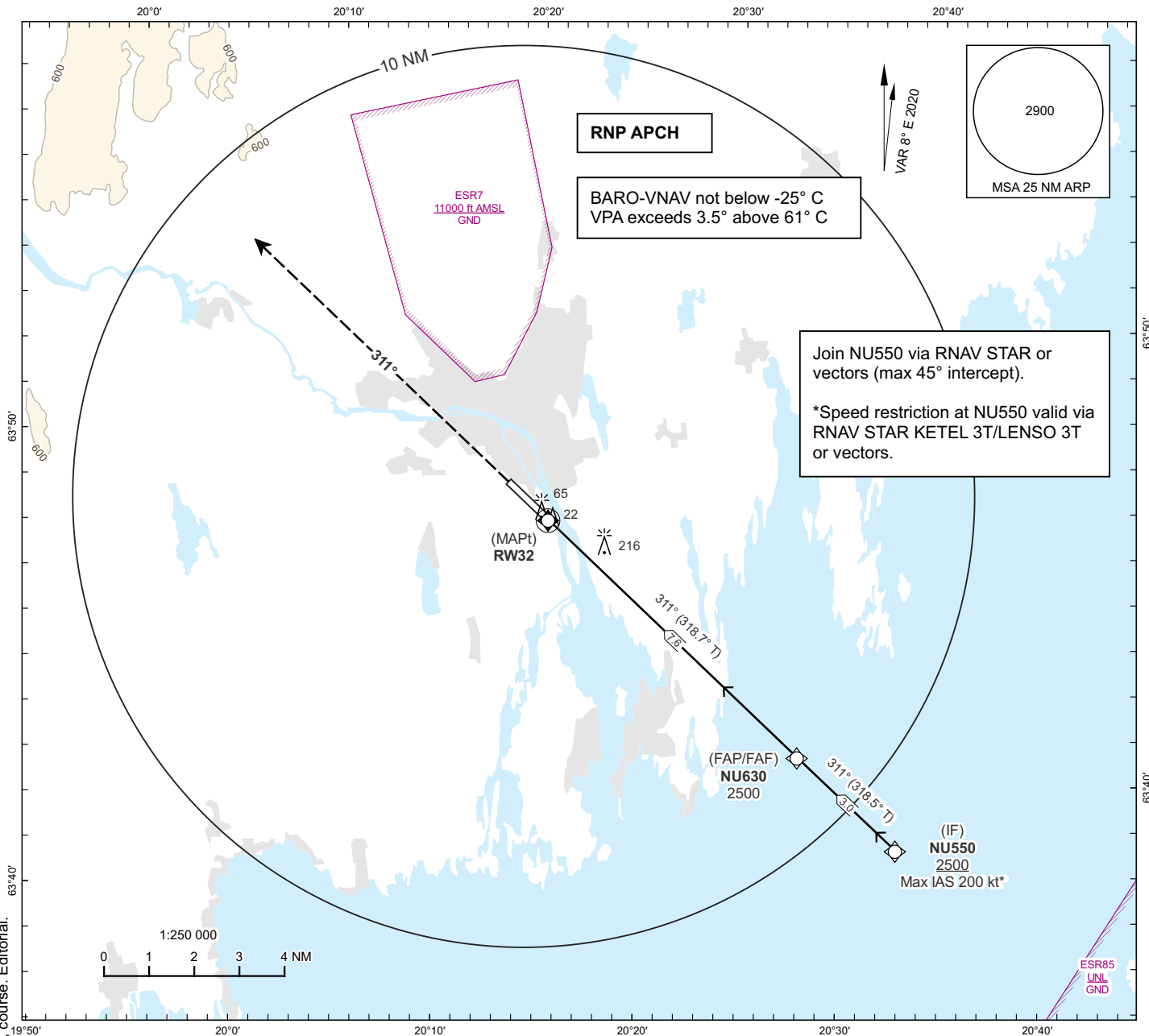
THR ELEV 17.3 ft AD ELEV 25 ft

OCH are related to THR.
BRG are MAG (True).
ALT, HGT and ELEV in ft.

UMEÅ TOWER 119.805

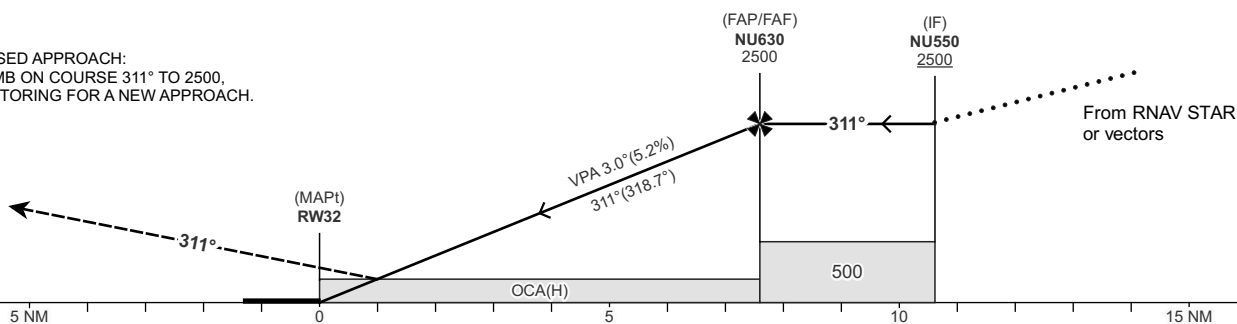
**UMEÅ
RNP RWY 32**

EGNOS CH 95063 E 32A



TA 5000 ft AMSL RDH 50.0 ft

MISSED APPROACH:
CLIMB ON COURSE 311° TO 2500,
VECTERING FOR A NEW APPROACH.



		OCA(H)				Final Approach	FAF-MAPt distance 7.6 NM						
CAT of ACFT		A	B	C	D	DME SNU	NM	2	3	4	5	6	7
Straight-in Approach	LPV	171(154)	181(164)	191(174)	203(186)	ALT	ft	704	1023	1341	1659	1978	2296
	LNAV/VNAV	356(339)	366(349)	376(359)	386(369)	GS	kt	80	100	120	140	160	180
	LNAV	480(470)				Rate of descent	ft/min	425	530	635	745	850	955

CHANGE: New LPV, LNAV/VNAV and LNAV OCA, OBST, Missed APCH, course, Editorial.

RNP RWY 32 via RNAV STAR or vectors

Path Term	Waypoint Identifier	Fly-over	Course °M(°T)	Dist (NM)	Turn Dir	Altitude	Speed Limits (kt)	VPA/RDH (°/ft)	Rec Navaid	Nav Spec
IF	NU550	-	-	-	-	+2500	-200	-	-	RNP APCH
TF	NU630	-	311°(318.5°)	3.0	-	@2500	-	-	-	RNP APCH
TF	RW32	Y	311°(318.7°)	7.6	-	@67	-	-3.00/50	-	RNP APCH
CA	-	-	311°(318.7°)	-	-	@2500	-	-	-	RNP APCH
VM	-	-	311°	-	-	-	-	-	-	RNP APCH

FAS Data Block

RNP RWY 32

Input data

Operation Type	0
SBAS Provider	1 (EGNOS)
Airport Identifier	ESNU
Runway	32
Runway Letter	0 (None)
Approach Performance Designator	0
Route Indicator	
Reference Path Data Selector	0
Reference Path Identifier	E32A
LTP/FTP Latitude	634700.5500N
LTP/FTP Longitude	0201758.0500E
LTP/FTP Ellipsoidal Height (metres)	27.2
FPAP Latitude	634754.7500N
Delta FPAP Latitude (seconds)	54.2000
FPAP Longitude	0201609.4900E
Delta FPAP Longitude (seconds)	-108.5600
Threshold Crossing Height	50.0
TCH Units Selector	0 (feet)
Glidepath Angle (degrees)	3.00
Course Width (metres)	105.00
Length Offset (metres)	0
HAL (metres)	40.0
VAL (metres)	35.0

Output data

Data Block	10 15 0E 13 05 20 00 00 01 32 33 05 8C 76 5F 1B 44 2A B6 08 10 15 70 A7 01 E0 AF FC F4 01 2C 01 64 00 C8 AF A7 00 8A A6
Calculated CRC Value	A7008AA6
Supplied CRC Value	A7008AA6
Comparison Result	OK