

AIP SVERIGE/SWEDEN

**INSTRUMENT  
APPROACH  
CHART - ICAO**

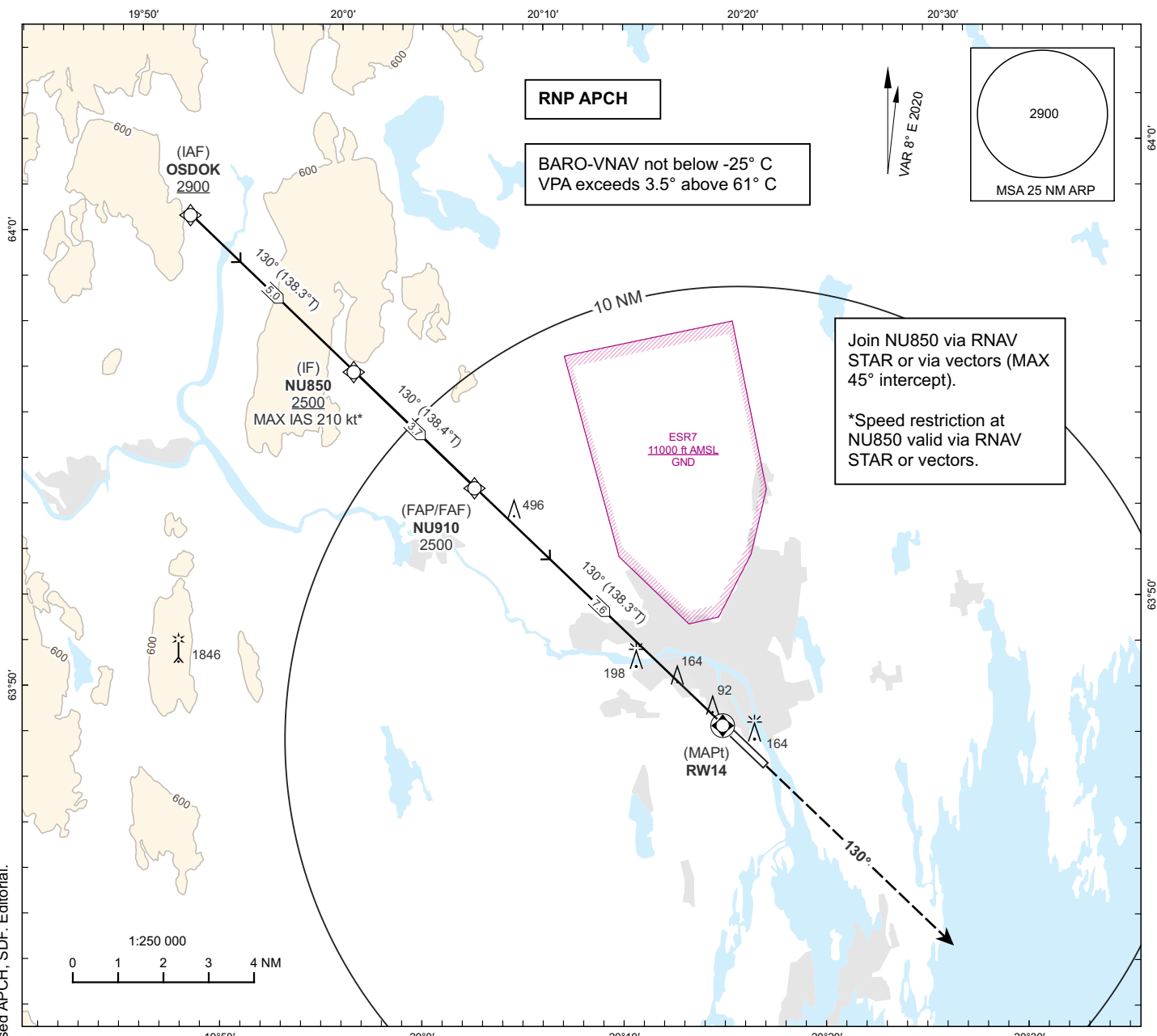
**THR ELEV 25.2 ft AD ELEV 25 ft**

OCH are related to THR.  
BRG are MAG (True).  
ALT, HGT and ELEV in ft.

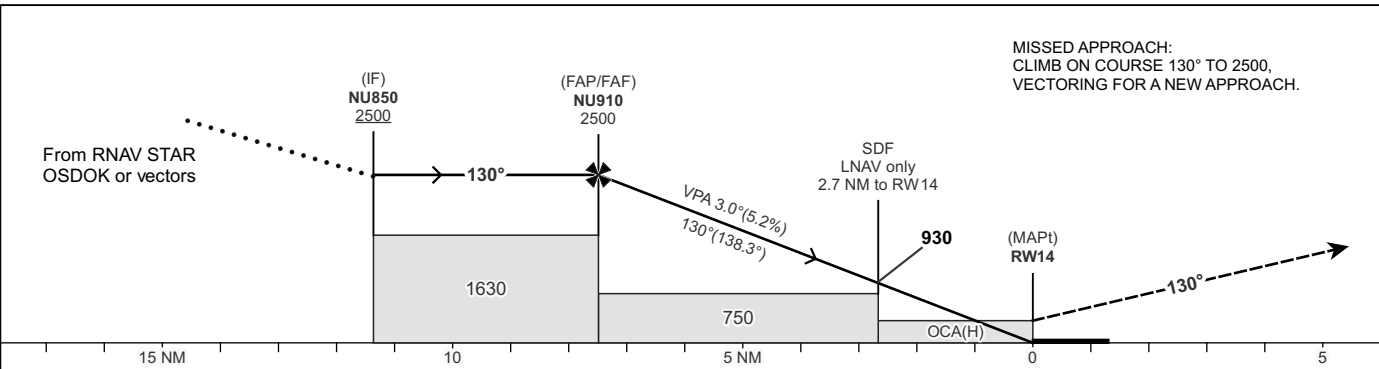
UMEÅ TOWER 119.805

**UMEÅ  
RNP RWY 14**

**EGNOS CH 71761 E 14A**



TA 5000 ft AMSL RDH 50.0 ft



		OCA(H)				Final Approach	FAF-MAPt distance 7.6 NM						
CAT of ACFT		A	B	C	D	Dist to RW14	NM	7	6	5	4	3	2
Straight-in Approach	LPV	204(179)	211(186)	222(197)	232(207)	ALT	ft	2304	1986	1667	1349	1031	712
	LNAV/VNAV	304(279)	314(289)	323(298)	334(309)	GS	kt	80	100	120	140	160	180
	LNAV	460(440)				Rate of descent	ft/min	425	530	635	745	850	955

CHANGE: New LPV, LNAV/VNAV and LNAV OCA(H), MOCA, OBST, Missed APCH, SDF, Editorial.

**RNP RWY 14 via RNAV STAR KETEL/LENSO/TINDO 3S or vectors**

Path Term	Waypoint Identifier	Fly-over	Course °M(°T)	Dist (NM)	Turn Dir	Altitude	Speed Limits (kt)	VPA/RDH (°/ft)	Rec Navaid	Nav Spec
IF	NU850	-	-	-	-	+2500	-210	-	-	RNP APCH
TF	NU910	-	130°(138.4°)	3.7	-	@2500	-	-	-	RNP APCH
TF	RW14	Y	130°(138.3°)	7.6	-	@75	-	-3.00/50	-	RNP APCH
CA	-	-	130°(138.4°)	-	-	+2500	-	-	-	RNP APCH
VM	-	-	130°	-	-	-	-	-	-	RNP APCH

**RNP RWY 14 via IAF OSDOK**

Path Term	Waypoint Identifier	Fly-over	Course °M(°T)	Dist (NM)	Turn Dir	Altitude	Speed Limits (kt)	VPA/RDH (°/ft)	Rec Navaid	Nav Spec
IF	OSDOK	-	-	-	-	+2900	-	-	-	RNP APCH
IF	NU850	-	130°(138.3°)	5.0	-	+2500	-	-	-	RNP APCH
TF	NU910	-	130°(138.4°)	3.7	-	@2500	-	-	-	RNP APCH
TF	RW14	Y	130°(138.3°)	7.6	-	@75	-	-3.00/50	-	RNP APCH
CA	-	-	130°(138.4°)	-	-	+2500	-	-	-	RNP APCH
VM	-	-	130°	-	-	-	-	-	-	RNP APCH

## FAS Data Block

## RNP RWY 14

## Input data

Operation Type	0
SBAS Provider	1 (EGNOS)
Airport Identifier	ESNU
Runway	14
Runway Letter	0 (None)
Approach Performance Designator	0
Route Indicator	
Reference Path Data Selector	0
Reference Path Identifier	E14A
LTP/FTP Latitude	634754.7500N
LTP/FTP Longitude	0201609.4900E
LTP/FTP Ellipsoidal Height (metres)	29.7
FPAP Latitude	634659.1000N
Delta FPAP Latitude (seconds)	-55.6500
FPAP Longitude	0201800.9600E
Delta FPAP Longitude (seconds)	111.4700
Threshold Crossing Height	50.0
TCH Units Selector	0 (feet)
Glidepath Angle (degrees)	3.00
Course Width (metres)	105.00
Length Offset (metres)	0
HAL (metres)	40.0
VAL (metres)	35.0

## Output data

Data Block	10 15 0E 13 05 0E 00 00 01 34 31 05 FC 1D 61 1B 24 DA B2 08 29 15 3C 4D FE DC 66 03 F4 01 2C 01 64 00 C8 AF 7E C5 5E 27
Calculated CRC Value	7EC55E27
Supplied CRC Value	7EC55E27
Comparison Result	OK