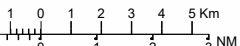
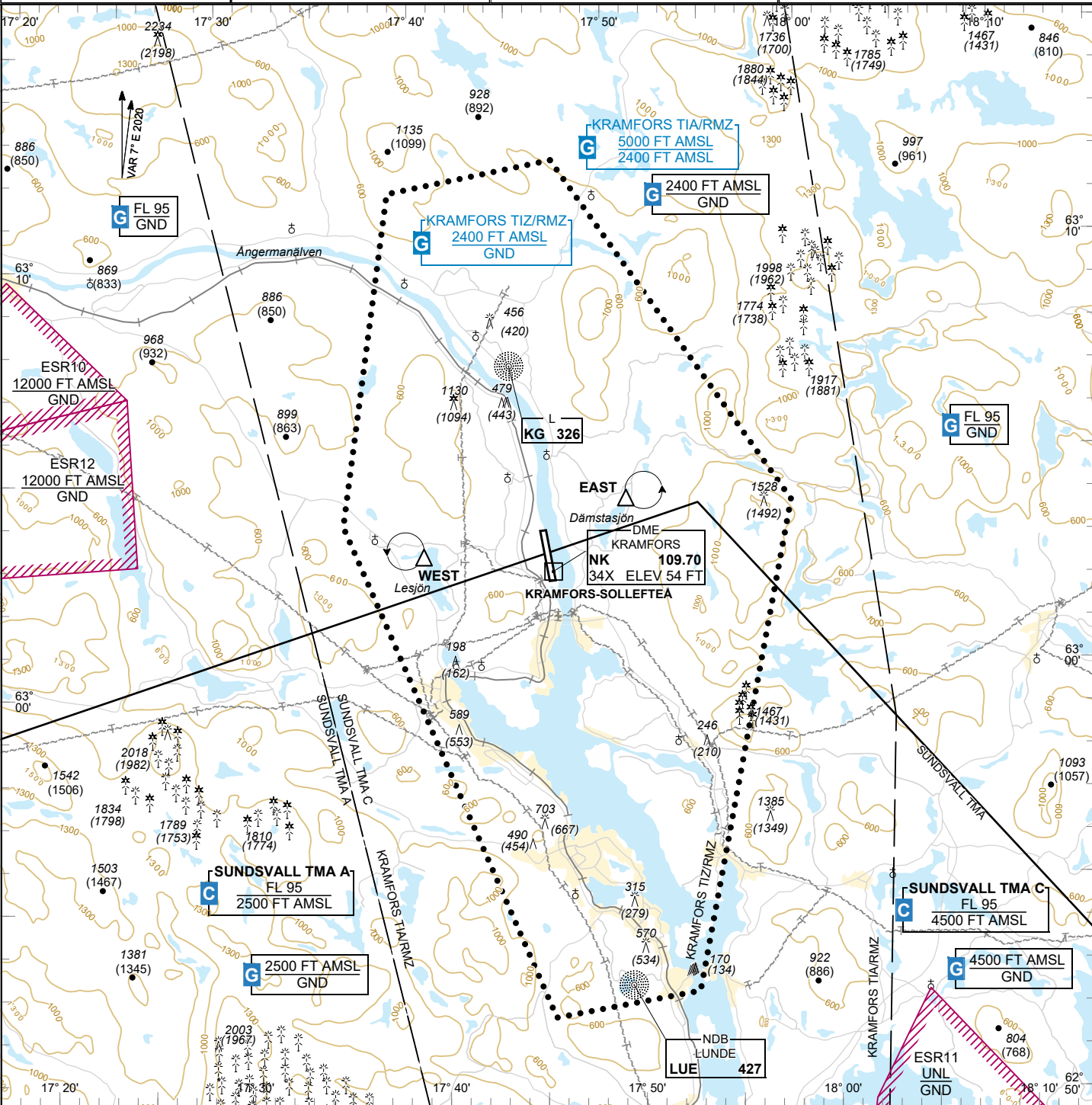


VISUAL APPROACH CHART - ICAO 1:250000 	AD ELEV 36 FEET ELEV and ALT in ft HGT in ft above AD ELEV TA 5000 AMSL	KRAMFORS INFORMATION 122.155	KRAMFORS-SOLLEFTEÅ SWEDEN
--------------------------------------------------------------------------------------------------------------------------------------	------------------------------------------------------------------------------------------------	----------------------------------------	----------------------------------



Communication failure NIL	<table border="1" style="width:100%; border-collapse: collapse;"> <tr> <th style="text-align: left;">RWY NR</th> <th style="text-align: left;">THR ELEV</th> <th style="text-align: left;">PAPI (MEHT)</th> </tr> <tr> <td>17</td> <td>35 ft</td> <td>Left/3.25° (49 ft)</td> </tr> <tr> <td>35</td> <td>23.5 ft</td> <td>Left/3.25° (57 ft)</td> </tr> </table>	RWY NR	THR ELEV	PAPI (MEHT)	17	35 ft	Left/3.25° (49 ft)	35	23.5 ft	Left/3.25° (57 ft)	Entry / exit point NIL Holding EAST: Hold north east of Dämstasjön of point 630409N 0175016E WEST: Hold north west of Lesjön of point 630257N 0173945E
RWY NR	THR ELEV	PAPI (MEHT)									
17	35 ft	Left/3.25° (49 ft)									
35	23.5 ft	Left/3.25° (57 ft)									

Remark
NIL

Legend
See GEN 2.3

CHANGE: ES R10 ELEV, ES R12 new, OBST