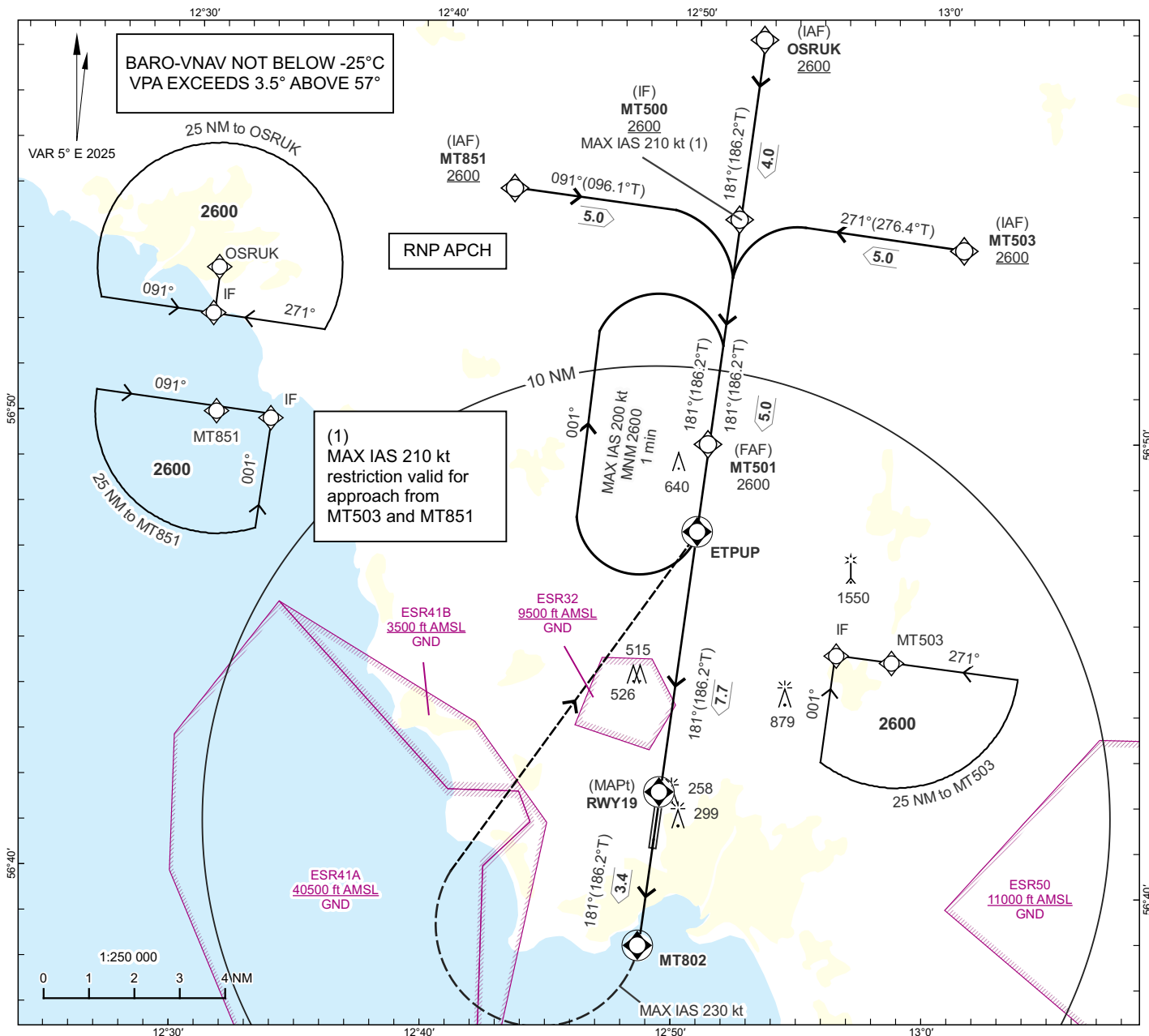


**INSTRUMENT  
APPROACH  
CHART - ICAO**

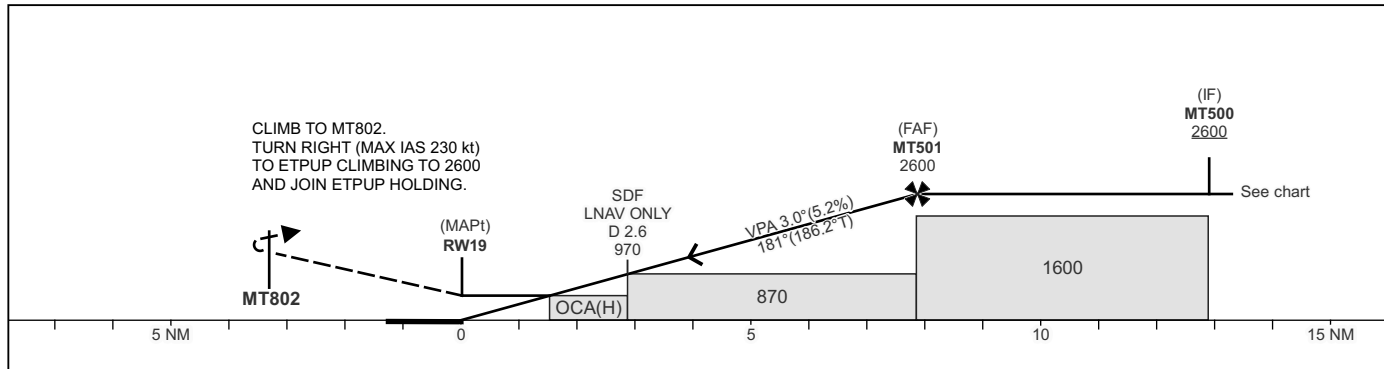
**THR ELEV 84.2 ft AD ELEV 101 ft**  
OCH are related to THR.  
Circling OCH are related to AD ELEV  
BRG are MAG (True). ALT, HGT and ELEV in ft.

HALMSTAD TOWER 130.105  
135.055

**HALMSTAD  
RNP RWY 19  
EGNOS CH 76870 E 19A**



TA 5000 ft AMSL RDH 51 ft



CAT of ACFT	OCA(H)				Final approach Dist to RWY19 NM	Distance FAF-MAPt 7.7 NM						
	A	B	C	D		3	4	5	6	7		
LPV	388(304)	400(316)	408(324)	419(335)	ALT	1090	1410	1730	2050	2360		
LNAV/VNAV	426(342)	433(349)	439(355)	460(376)	GS	kt	80	100	120	140	160	180
LNAV	700(620)				Rate of descent	ft/min	425	530	635	745	850	955
Circling	700(620)	830(730)	1280(1180)	1280(1180)								

CHANGE: OCA(H), editorial

**RNP RWY 19 via MT851**

Path Term	Waypoint Identifier	Fly-over	Course °M(°T)	Dist (NM)	Turn Dir	Rest Alts (ft AMSL)	Speed Limits (kt)	VPA/RDH (°/ft)	Rec Navaid	Nav Spec
IF	MT851	-	-	-	-	+2600	-	-	-	RNP APCH
TF	MT500	-	091°(096.1°)	5.0	-	+2600	-210	-	-	RNP APCH

**RNP RWY 19 via OSRUK**

Path Term	Waypoint Identifier	Fly-over	Course °M(°T)	Dist (NM)	Turn Dir	Rest Alts (ft AMSL)	Speed Limits (kt)	VPA/RDH (°/ft)	Rec Navaid	Nav Spec
IF	OSRUK	-	-	-	-	+2600	-	-	-	RNP APCH
TF	MT500	-	181°(186.2°)	4.0	-	+2600	-	-	-	RNP APCH

**RNP RWY 19 via MT503**

Path Term	Waypoint Identifier	Fly-over	Course °M(°T)	Dist (NM)	Turn Dir	Rest Alts (ft AMSL)	Speed Limits (kt)	VPA/RDH (°/ft)	Rec Navaid	Nav Spec
IF	MT503	-	-	-	-	+2600	-	-	-	RNP APCH
TF	MT500	-	271°(276.4°)	5.0	-	+2600	-210	-	-	RNP APCH

Path Term	Waypoint Identifier	Fly-over	Course °M(°T)	Dist (NM)	Turn Dir	Rest Alts (ft AMSL)	Speed Limits (kt)	VPA/RDH (°/ft)	Rec Navaid	Nav Spec
IF	MT500	-	-	-	-	+2600	-	-	-	RNP APCH
TF	MT501	-	181°(186.2°)	5.0	-	@2600	-	-	-	RNP APCH
TF	RW19	Y	181°(186.2°)	7.7	-	@135	-	-3.0/51	-	RNP APCH
TF	MT802	Y	181°(186.2°)	3.4	-	-	-	-	-	RNP APCH
DF	ETPUP	Y	-	-	R	+2600	-230	-	-	RNP APCH

Path Term	Waypoint Identifier	Fly-over	Course °M(°T)	Dist (NM)	Turn Dir	Rest Alts (ft AMSL)	Speed Limits (kt)	VPA/RDH (°/ft)	Rec Navaid	Nav Spec
HM	ETPUP	Y	181°(186.2°)	-	R	+2600	-200	-	-	RNAV 1

## FAS Data Block

## RNP RWY 19

## Input data

Operation Type	0
SBAS Provider	1 (EGNOS)
Airport Identifier	ESMT
Runway	19
Runway Letter	0 (None)
Approach Performance Designator	0
Route Indicator	
Reference Path Data Selector	0
Reference Path Identifier	E19A
LTP/FTP Latitude	564204.3885N
LTP/FTP Longitude	0124919.9260E
LTP/FTP Ellipsoidal Height (metres)	62.3
FPAP Latitude	564047.8050N
Delta FPAP Latitude (seconds)	-76.5835
FPAP Longitude	0124904.7955E
Delta FPAP Longitude (seconds)	-15.1305
Threshold Crossing Height	51.0
TCH Units Selector	0 (feet)
Glidepath Angle (degrees)	3.00
Course Width (metres)	105.00
Length Offset (metres)	112
HAL (metres)	40.0
VAL (metres)	50.0

## Output data

Data Block	10 14 0D 13 05 13 00 00 01 39 31 05 C9 61 55 18 6C B0 80 05 6F 16 B1 A9 FD CB 89 FF FE 01 2C 01 64 0E C8 FA 0D 81 29 2D
Calculated CRC Value	0D81292D

## Required Additional Data

ICAO Code	ES
LTP/FTP Orthometric Height (metres)	25.7