

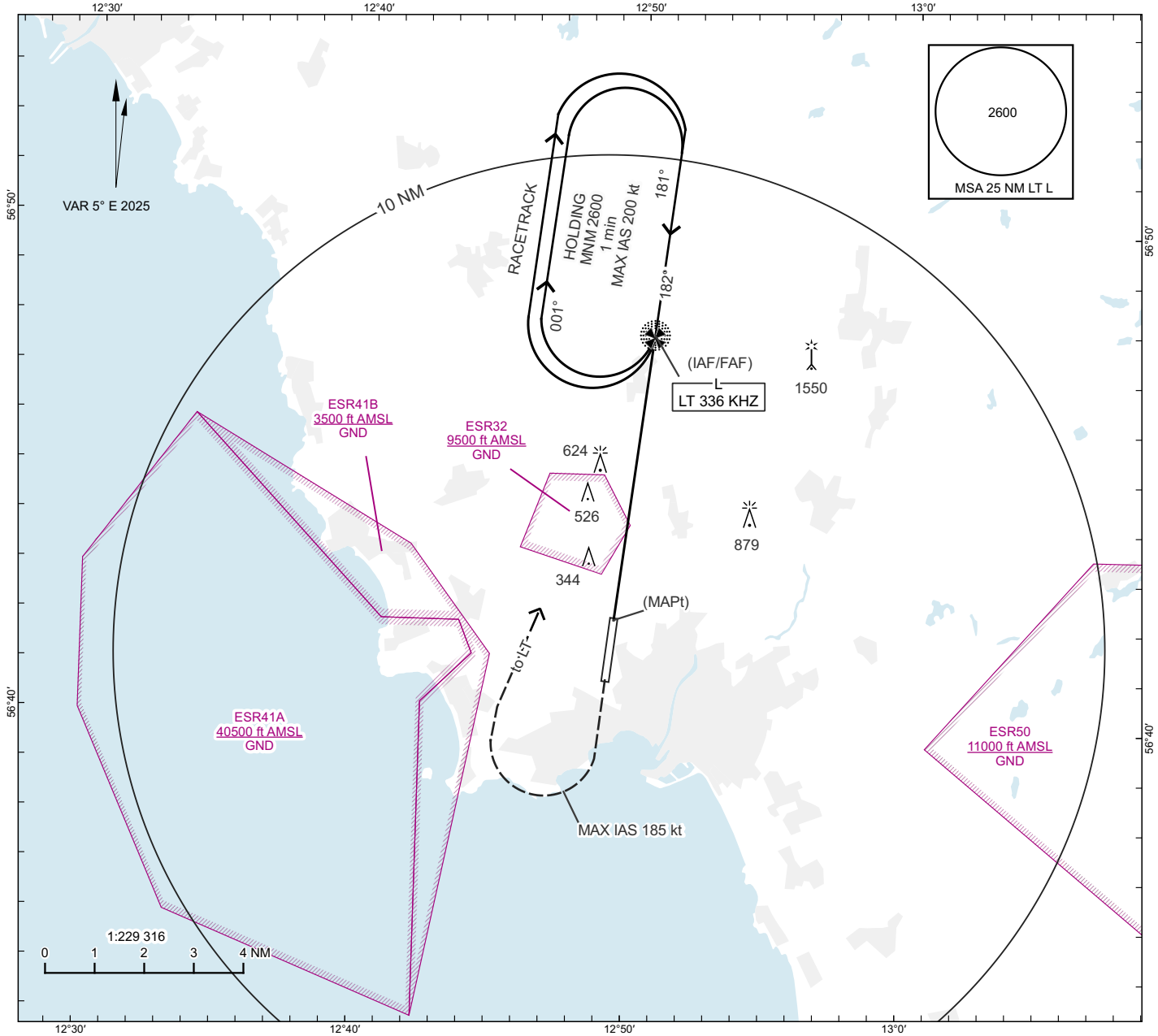
**INSTRUMENT
APPROACH
CHART - ICAO**

THR ELEV 84.2 ft AD ELEV 101 ft

OCH are related to THR.
Circling OCH are related to AD ELEV
BRG are MAG
ALT, HGT and ELEV in ft.

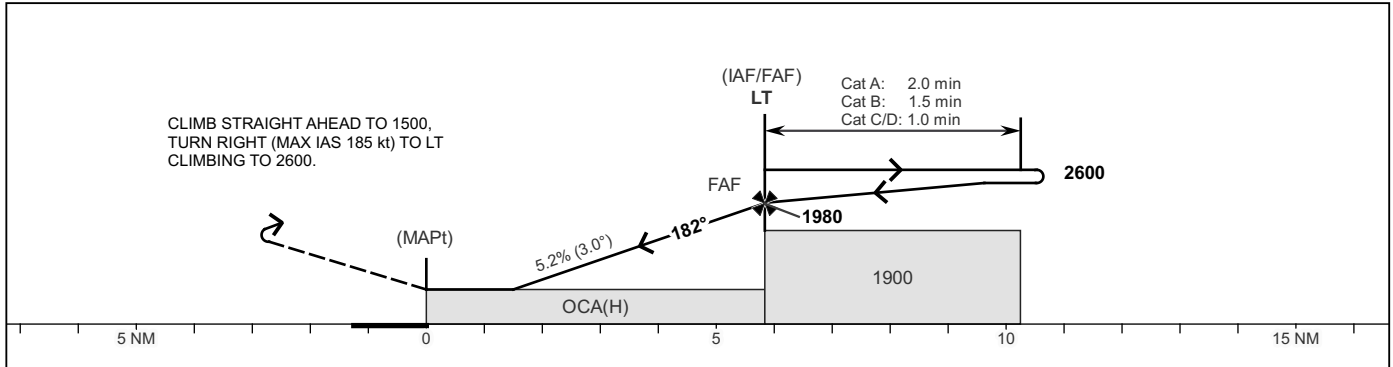
HALMSTAD TOWER 130.105
135.055

**HALMSTAD
NDB RWY 19**



TA 5000 ft AMSL

Final APCH line 1° offset



OCA(H)					Final approach			Distance FAF-MAPt 5.8 NM							
CAT of ACFT	A	B	C	D	DME MT NM	3	4	5							
Straight-in Approach	880(800)				ALT	1040	1360	1680							
					GS	kt	80	100	120	140	160	180			
Circling	880(780)	880(780)	1280(1180)	1280(1180)	Time	min:s	4:21	3:29	2:54	2:29	2:10	1:56			
Circling CAT D MAX IAS 195 kt					Rate of descent	ft/min	425	530	635	745	850	955			

CHANGE: VAR