

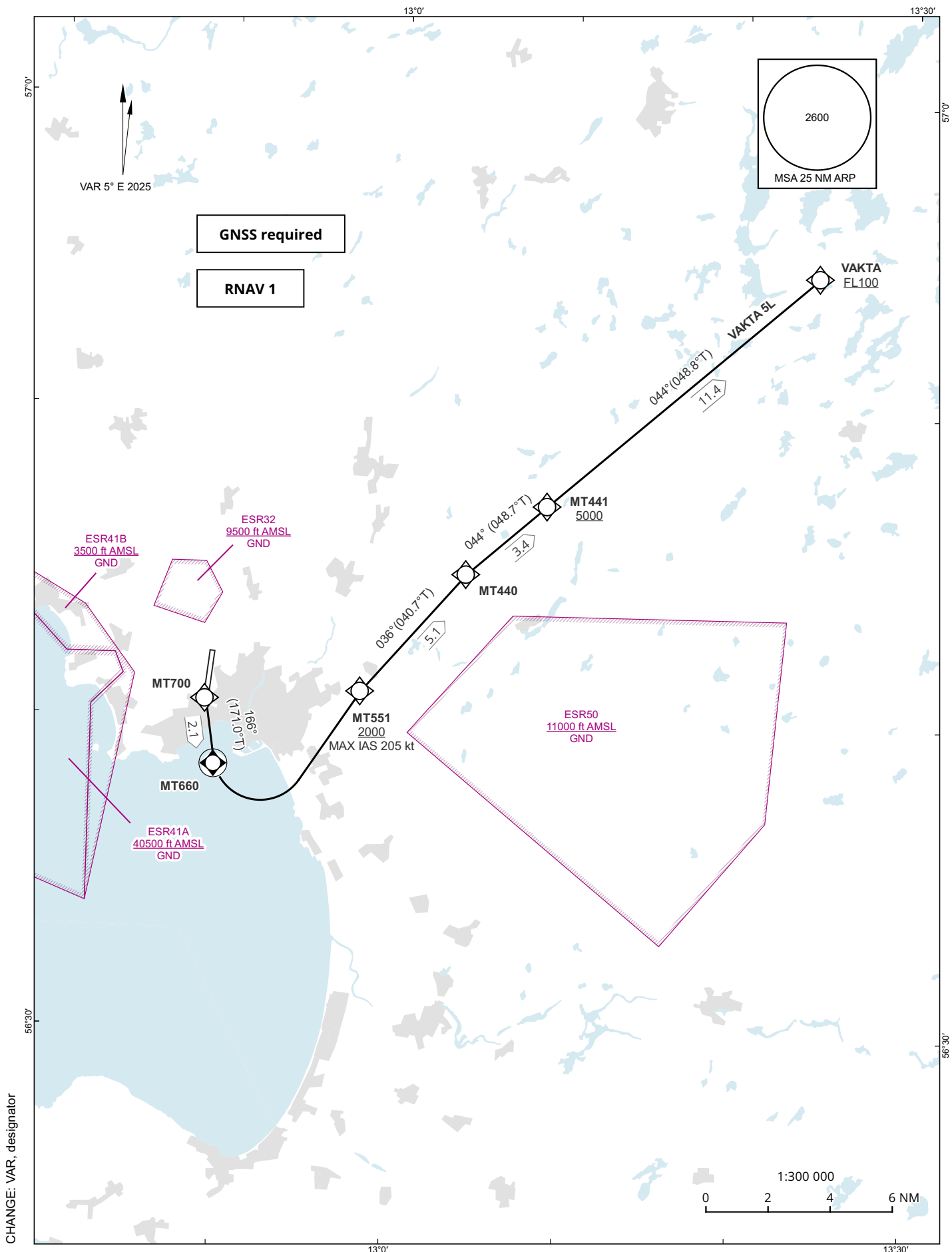
AIP SVERIGE/SWEDEN
STANDARD INSTRUMENT
DEPARTURE CHART (SID) -
ICAO

HGT and ALT in ft
BRG are MAG (True)
TA 5000 ft AMSL

HALMSTAD TOWER	130.105
	135.055

HALMSTAD
RNAV SID RWY 19

VAKTA 5L



CHANGE: VAR, designator

Prescribed Coding of RNAV SID for RWY 19

VAKTA 5L

Path Term	Waypoint Identifier	Fly-over	Course °M(°T)	Dist (NM)	Turn Dir	Rest Alts (ft AMSL)	Speed Limits (kt)	VPA/RDH (°/ft)	Rec Navaid	Nav Spec
DF	MT700	-	-	-	-	-	-	-	-	RNAV 1
TF	MT660	Y	166°(171.0°)	2.1	-	-	-	-	-	RNAV 1
DF	MT551	-	-	-	L	+2000	-205	-	-	RNAV 1
TF	MT440	-	036°(040.7°)	5.1	-	-	-	-	-	RNAV 1
TF	MT441	.	044°(048.7°)	3.4	-	+5000	-	-	-	RNAV 1
TF	VAKTA	-	044°(048.8°)	11.4	-	+FL100	-	-	-	RNAV 1

SID instruction: MT700 - MT660 - MT551 (max IAS 205 kt until MT551, min 2000 ft) - MT440 - MT441 (min 5000 ft) - VAKTA (min FL100)