

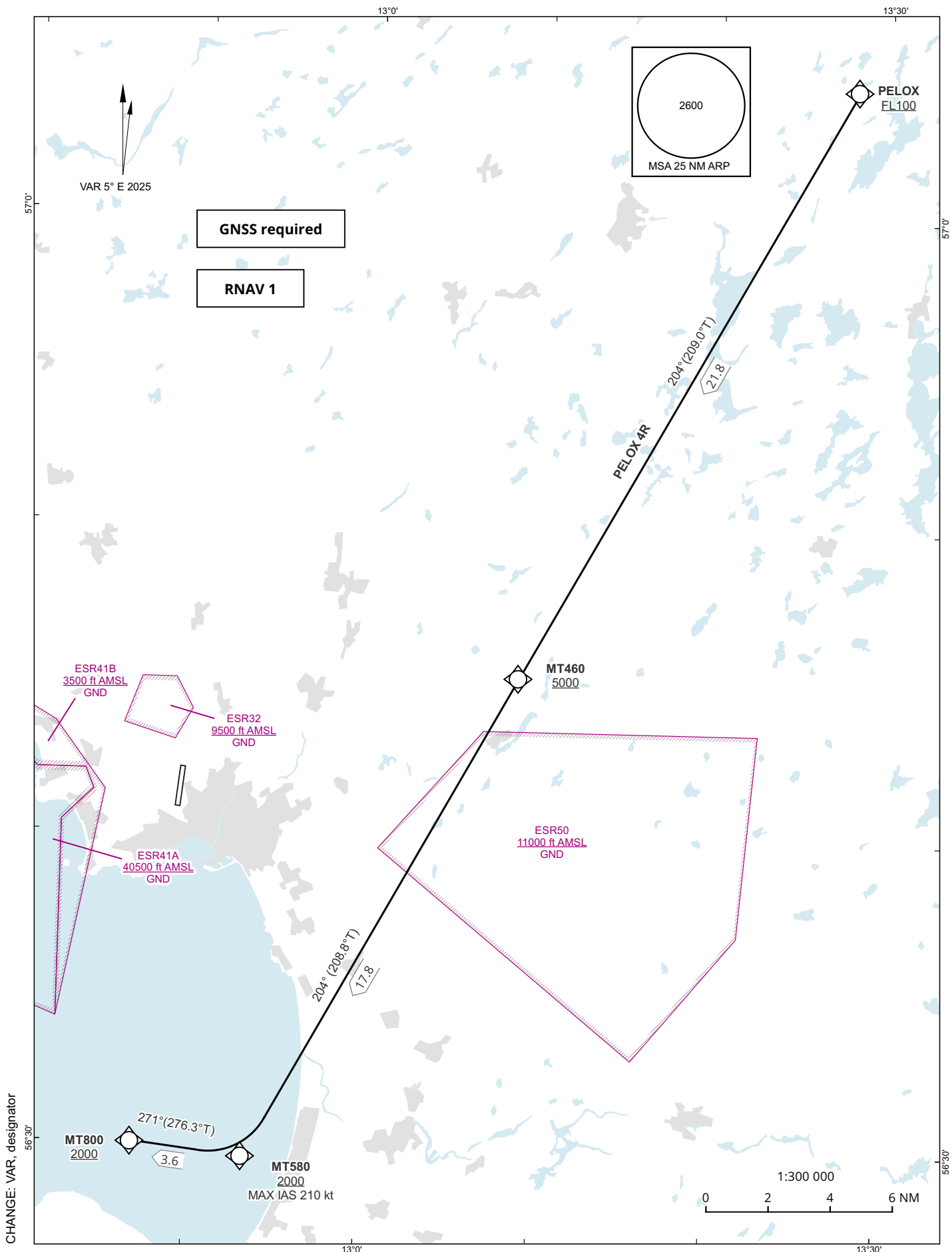
AIP SVERIGE/SWEDEN
STANDARD INSTRUMENT
ARRIVAL CHART (STAR) -
ICAO

HGT and ALT in ft
BRG are MAG (True)
TA 5000 ft AMSL

HALMSTAD TOWER 130.105
135.055

HALMSTAD
RNAV STAR RWY 01

PELOX 4R



CHANGE: VAR, designator

Prescribed Coding of RNAV STAR for RWY 01

PELOX 4R

Path Term	Waypoint Identifier	Fly-over	Course °M(°T)	Dist (NM)	Turn Dir	Rest Alts (ft AMSL)	Speed Limits (kt)	VPA/RDH (°/ft)	Rec Navaid	Nav Spec
IF	PELOX	-	-	-	-	+FL100	-	-	-	RNAV 1
TF	MT460	-	204°(209.0°)	21.8	-	+5000	-	-	-	RNAV 1
TF	MT580	-	204°(208.8°)	17.8	-	+2000	-210	-	-	RNAV 1
TF	MT800	-	271°(276.3°)	3.6	-	+2000	-	-	-	RNAV 1

STAR instruction: PELOX (FL100 or above) - MT460 (5000 ft or above) - MT580 (max IAS 210 kt, 2000 ft or above) - MT800 (2000 ft or above)