

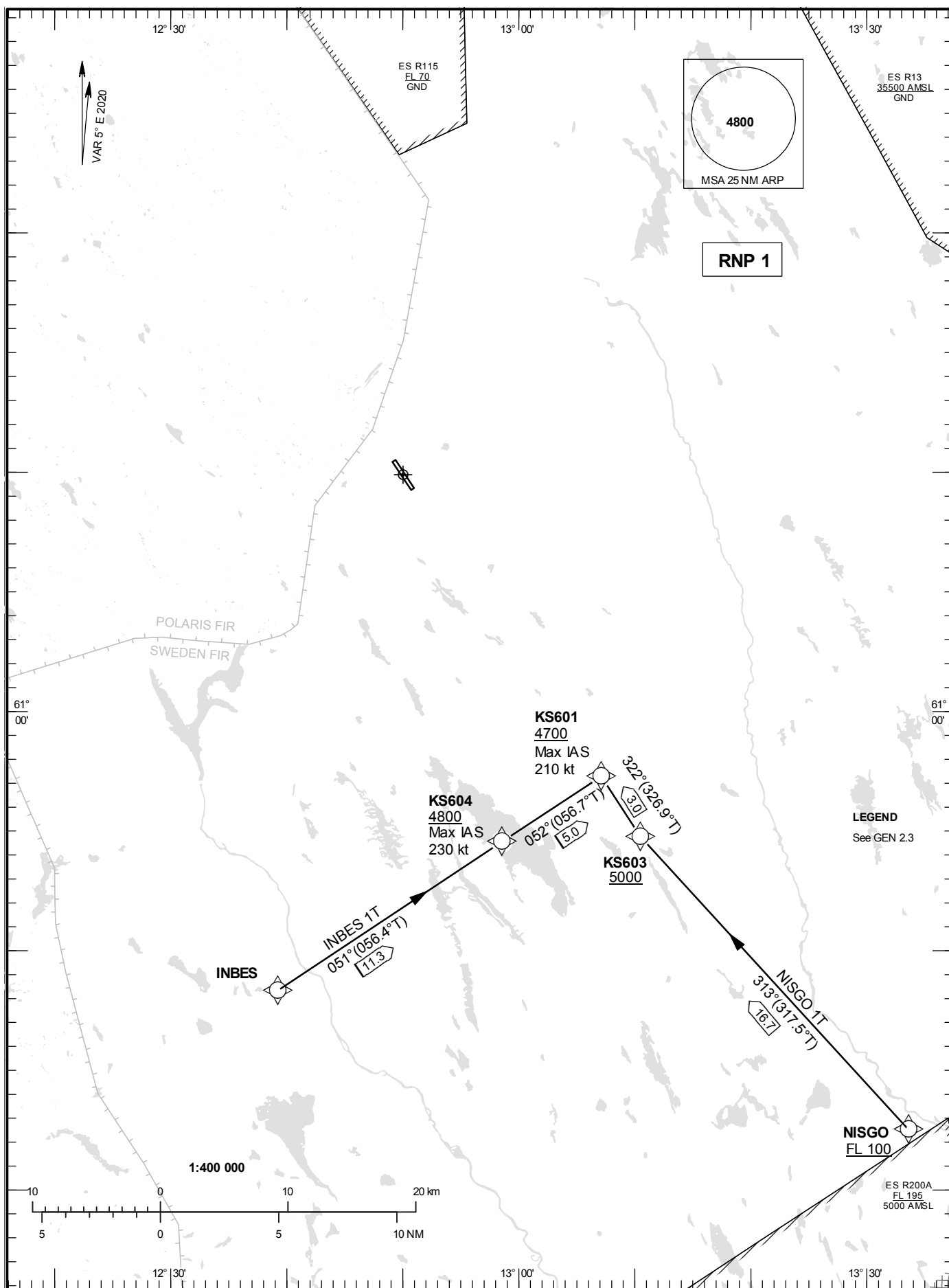
SÄLEN/Scandinavian Mountains

STANDARD INSTRUMENT  
ARRIVAL CHART (STAR) -  
ICAO

HGT and ALT in ft  
BRG are MAG (True)  
TA 6000 ft AMSL

SÄLEN TOWER 124.460

RNP STAR RWY 33



CHANGE: ES R200A remark removed

**SÄLEN/Scandinavian Mountains**

**Prescribed Coding of RNP STAR for RWY 33**

**NOTES:**

RNP 1 for positioning update.

Operators unable to fly RNP 1 shall inform ATC "UNABLE RNP STAR". Radar vectors will then be provided.

RNP STAR end at KS601 for transition to ILS apch or RNP apch RWY 33.

INBES 1T: If passing INBES at FL100 descent gradient to KS601 is 5.3% (3.06°).

**INBES 1T**

Path Term	Waypoint Identifier	Fly-over	Course °M(°T)	Dist (NM)	Turn Dir	Rest Alts (ft AMSL)	Speed Limits (kt)	VPA/RDH (°/ft)	Rec Navaid	Navigation Specification
IF	INBES	-	-	-	-	-	-	-	-	RNP 1
TF	KS604	-	051°(056.4°)	11.3	-	+4800	-230	-	-	RNP 1
TF	KS601	-	052°(056.7°)	5.0	-	+4700	-210	-	-	RNP 1

STAR instruction: INBES – KS604 (4800 ft or above, max IAS 230 kt) – KS601 (4700 ft or above, max IAS 210 kt)

**NISGO 1T**

Path Term	Waypoint Identifier	Fly-over	Course °M(°T)	Dist (NM)	Turn Dir	Rest Alts (ft AMSL)	Speed Limits (kt)	VPA/RDH (°/ft)	Rec Navaid	Navigation Specification
IF	NISGO	-	-	-	-	+FL100	-	-	-	RNP 1
TF	KS603	-	313°(317.5°)	16.7	-	+5000	-	-	-	RNP 1
TF	KS601	-	322°(326.9°)	3.0	-	+4700	-210	-	-	RNP 1

STAR instruction: NISGO (FL100 or above) – KS603 (5000ft or above) – KS601 (4700 ft or above, max IAS 210 kt)