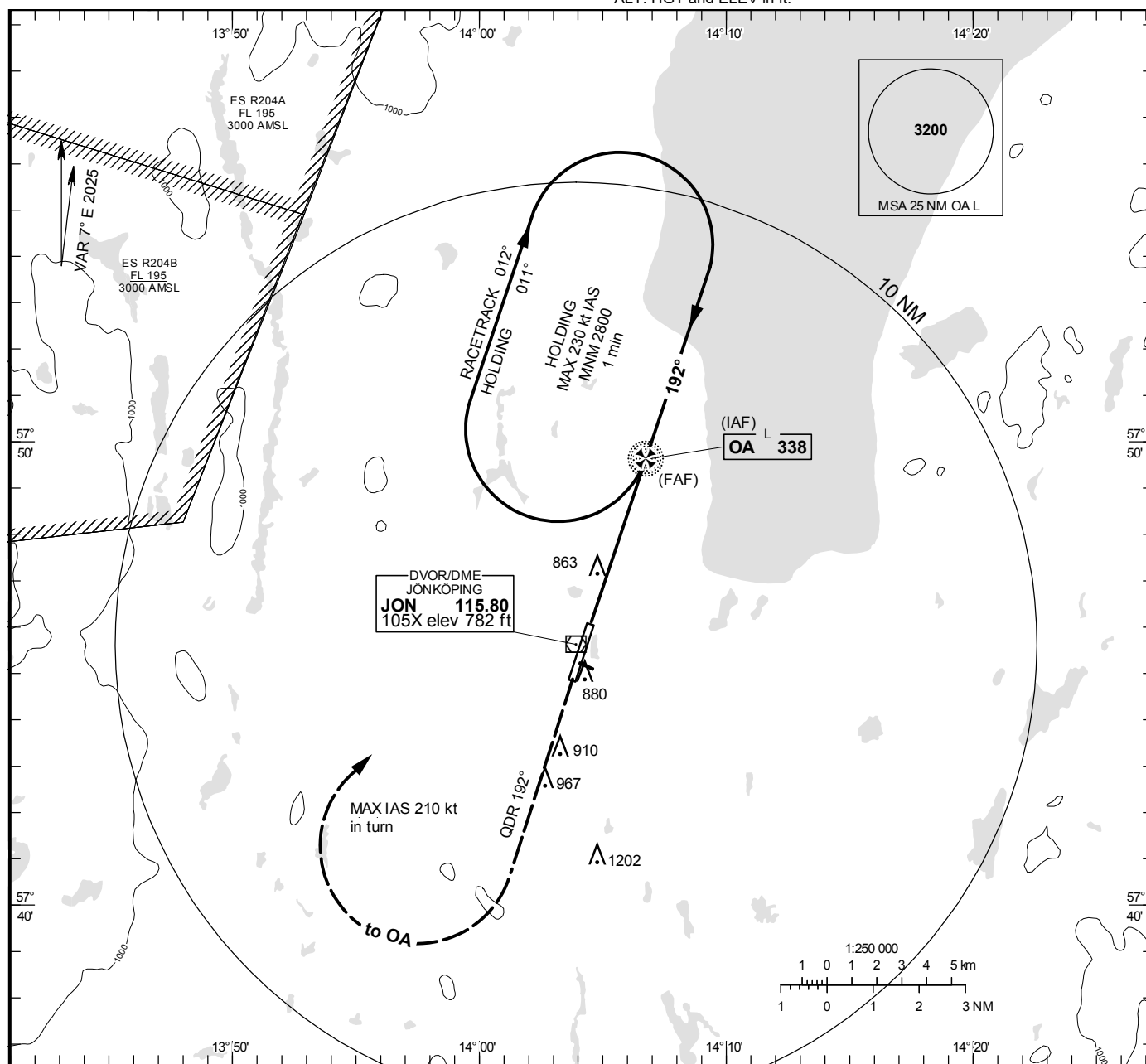


JÖNKÖPING
NDB RWY 19

JÖNKÖPING TOWER 118.255

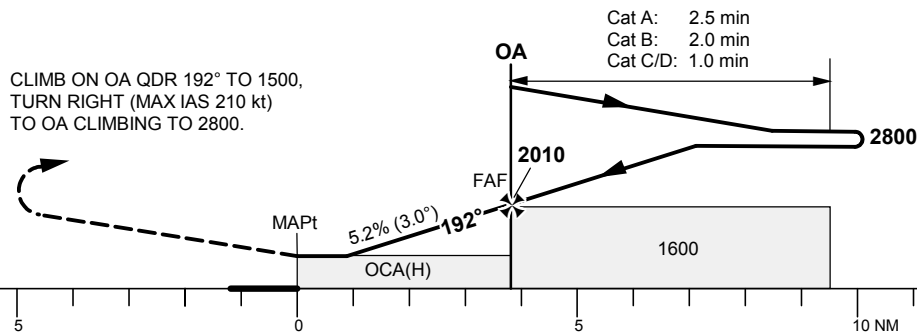
THR ELEV 739.1 ft, AD ELEV 742 ft
OCH are related to THR.
Circling OCH are related to AD ELEV.
BRG are MAG
ALT. HGT and ELEV in ft.

INSTRUMENT
APPROACH
CHART - ICAO



TA 5000 ft AMSL

Final APCH line 1° offset



Cat of ACFT	OCA (H)				Final approach	Distance FAF-MAPt 3.8 NM						
	A	B	C	D		DME JON NM	2	3	4			
Straight-in Approach	1130(400)				ALT	1280	1600	1920				
Circling (Max IAS 190 kt)	1210(470)	1270(530)	1600(860)	1600(860)	GS	80	100	120	140	160	180	
					Time	min:s	2:51	2:17	1:54	1:38	1:26	1:16
					Rate of descent	ft/min	425	530	635	745	850	955

CHANGE: ES R204