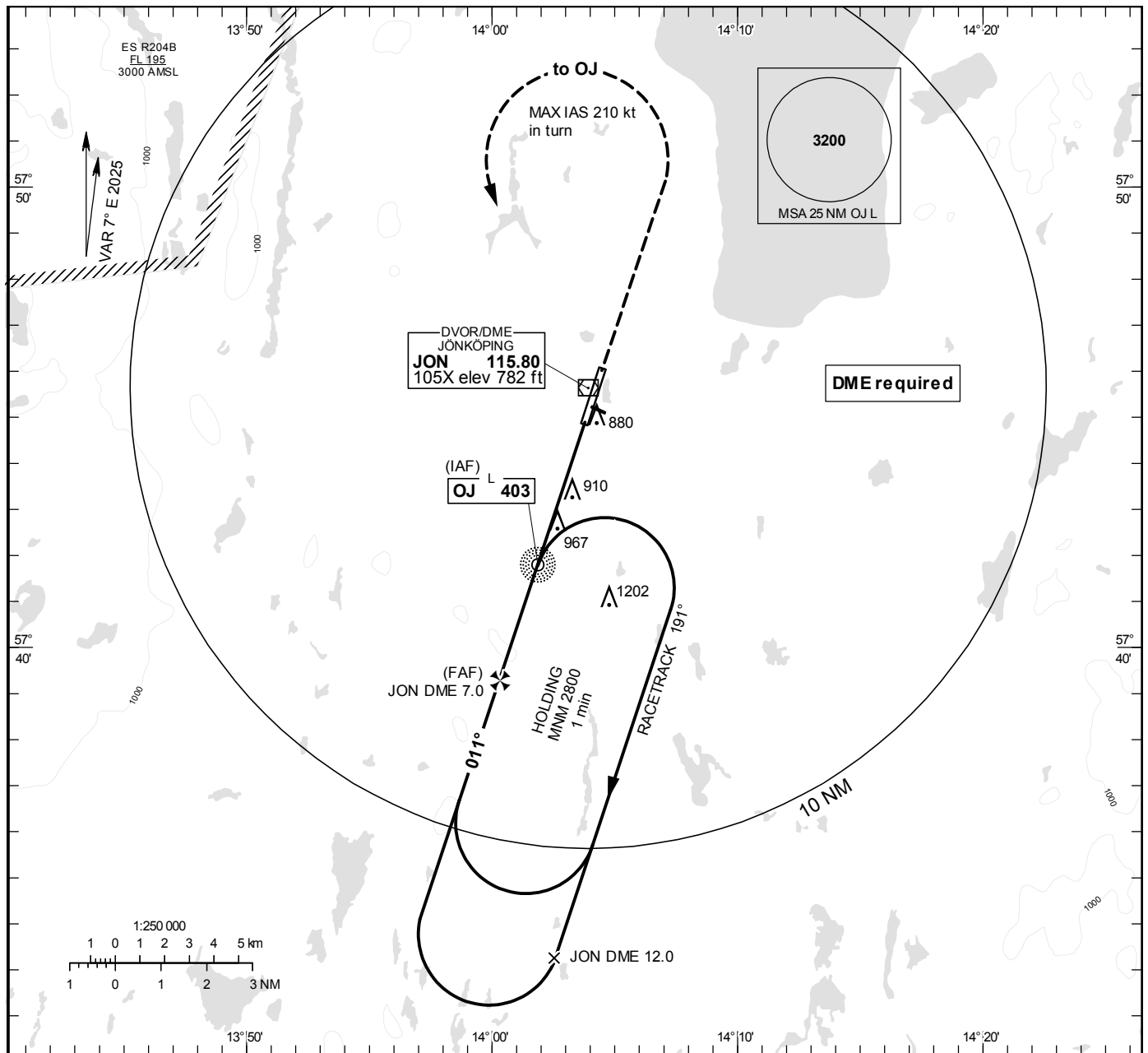


**JÖNKÖPING**  
**NDB RWY 01**

JÖNKÖPING TOWER 118.255

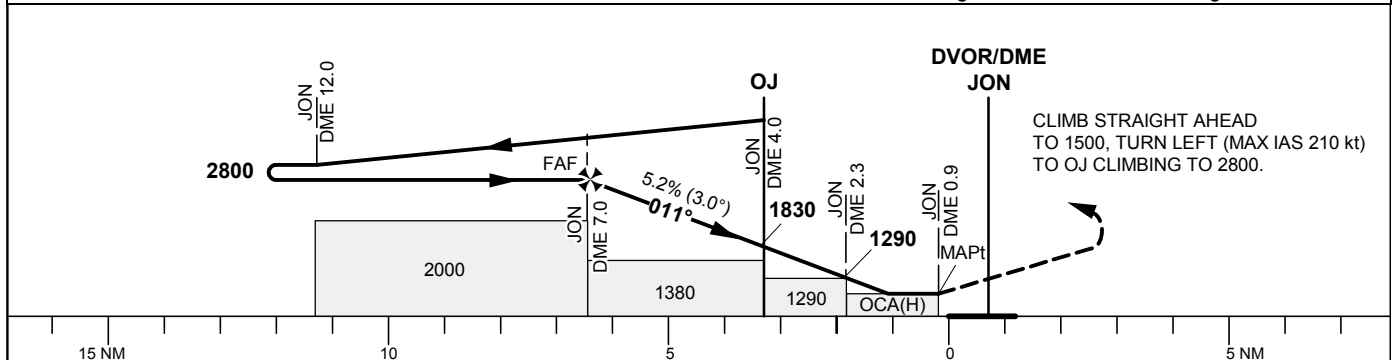
**THR ELEV 734.3 ft, AD ELEV 742 ft**  
OCH are related to THR.  
Circling OCH are related to AD ELEV.  
BRG are MAG  
ALT. HGT and ELEV in ft.

**INSTRUMENT**  
**APPROACH**  
**CHART – ICAO**



TA 5000 ft AMSL

\*Timing not authorized for defining the MAPt



OCA (H)					Final approach		Distance FAF-MAPt 6.1 NM*					
Cat of ACFT	A	B	C	D	DME JON NM	7	6	5	4	3	2	
Straight-in Approach	1160(430)				ALT	2790	2470	2150	1830	1510	1200	
Circling (Max IAS 190 kt)	1210(470)	1270(530)	1600(860)	1600(860)	GS	kt	80	100	120	140	160	180
					Time	min:s	4:35	3:40	3:03	2:37	2:17	2:02
					Rate of descent	ft/min	425	530	635	745	850	955

CHANGE: MOCA, ES R204