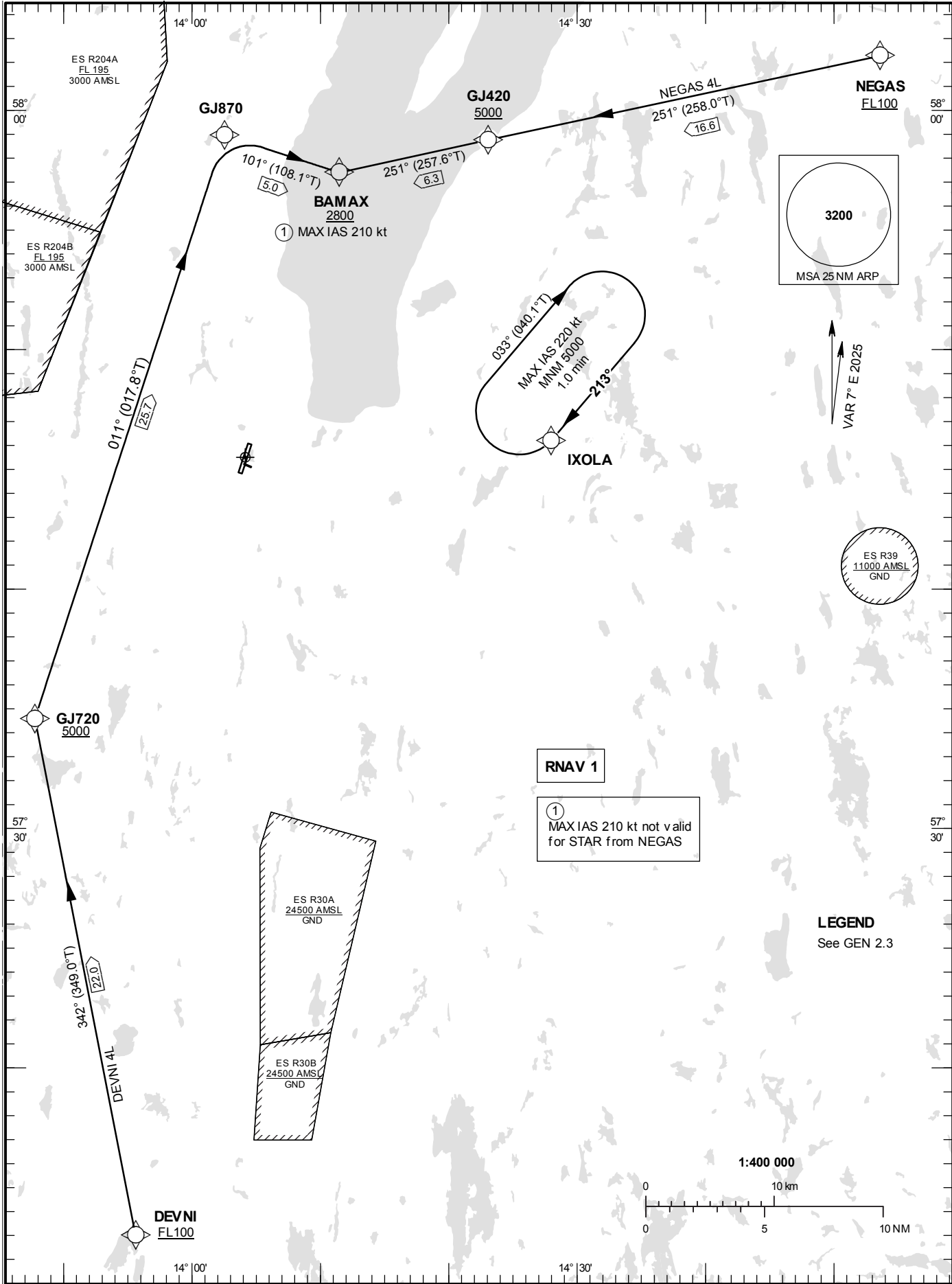


STANDARD INSTRUMENT
ARRIVAL CHART (STAR) -
ICAO

HGT and ALT in ft
BRG are MAG (True)
TA 5000 ft AMSL

JÖNKÖPING TOWER 118.255

RNAV (GNSS) RWY 19
DEVNI 4L, NEGAS 4L.



CHANGE: ESR204A and ESR204B remark removed

JÖNKÖPING**Prescribed Coding of RNAV STAR for RWY 19****DEVNI 4L**

Path Term	Waypoint Identifier	Fly-over	Course °M(°T)	Dist (NM)	Turn Dir	Rest Alts (ft AMSL)	Speed Limits (kt)	VPA/RDH (°/ft)	Rec Navaid	Navigation Specification
IF	DEVNI	-	-	-	-	+FL100	-	-	-	RNAV 1
TF	GJ720	-	342°(349.0°)	22.0	-	+5000	-	-	-	RNAV 1
TF	GJ870	-	011°(017.8°)	25.7	-	-	-	-	-	RNAV 1
TF	BAMAX	-	101°(108.0°)	5.0	-	+2800	-210	-	-	RNAV 1

STAR instruction: DEVNI (FL100 or above) – GJ720 (5000 ft or above) – GJ870 – BAMAX (2800 ft or above, MAX IAS 210 kt)

NEGAS 4L

Path Term	Waypoint Identifier	Fly-over	Course °M(°T)	Dist (NM)	Turn Dir	Rest Alts (ft AMSL)	Speed Limits (kt)	VPA/RDH (°/ft)	Rec Navaid	Navigation Specification
IF	NEGAS	-	-	-	-	+FL100	-	-	-	RNAV 1
TF	GJ420	-	251°(258.0°)	16.6	-	+5000	-	-	-	RNAV 1
TF	BAMAX	-	251°(257.6°)	6.3	-	+2800	-	-	-	RNAV 1

STAR instruction: NEGAS (FL100 or above) – GJ420 (5000 ft or above) – BAMAX (2800 ft or above)