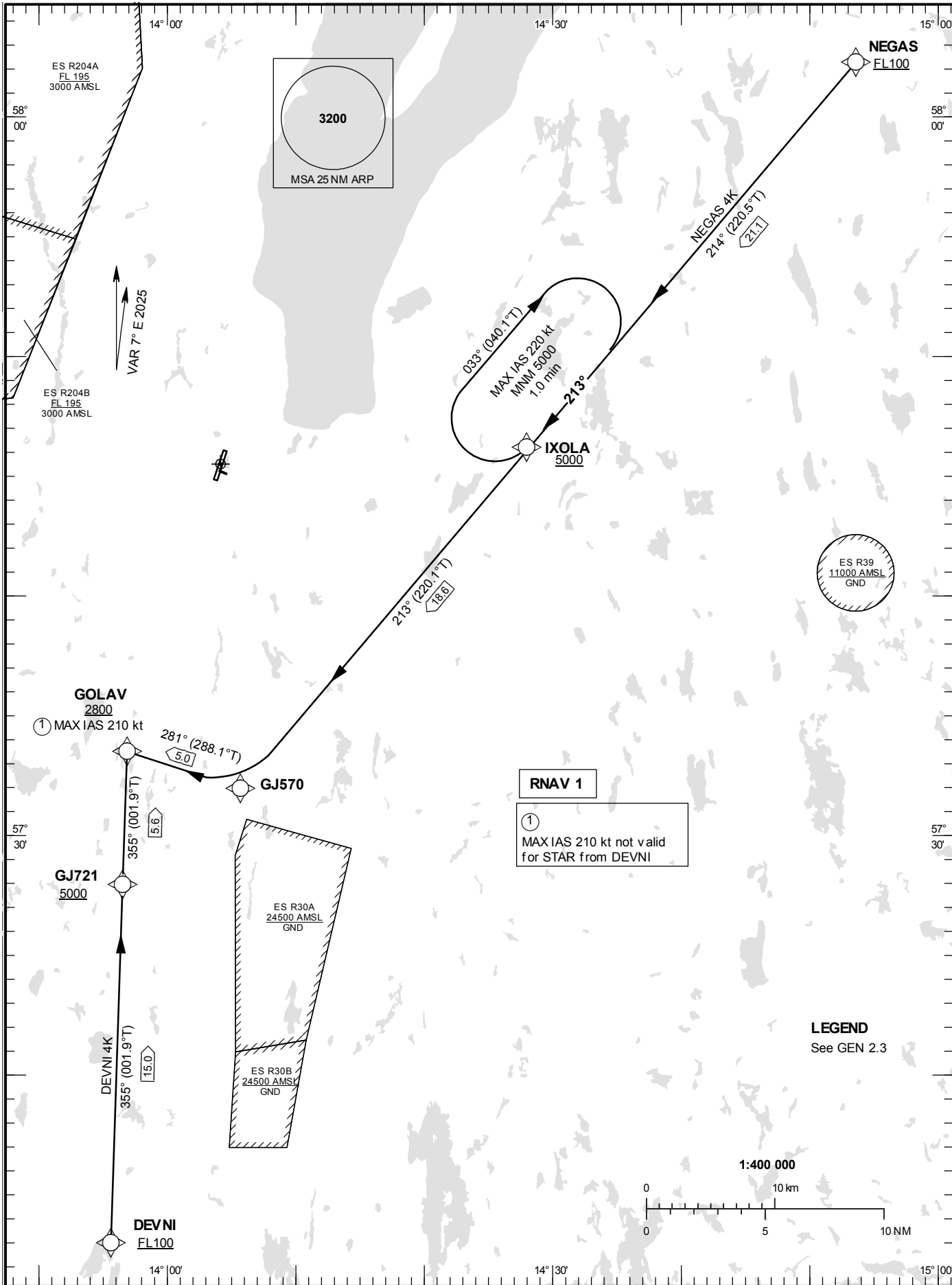


**STANDARD INSTRUMENT  
ARRIVAL CHART (STAR) -  
ICAO**

HGT and ALT in ft  
BRG are MAG (True)  
TA 5000 ft AMSL

JÖNKÖPING TOWER 118.255

**RNAV (GNSS) RWY 01**  
DEVNI 4K, NEGAS 4K.



**RNAV 1**  
①  
MAX IAS 210 kt not valid  
for STAR from DEVNI

**LEGEND**  
See GEN 2.3

CHANGE: ESR204A and ESR204B remark removed

**JÖNKÖPING**

**Prescribed Coding of RNAV STAR for RWY 01**

**DEVNI 4K**

| Path Term | Waypoint Identifier | Fly-over | Course °M(°T) | Dist (NM) | Turn Dir | Rest Alts (ft AMSL) | Speed Limits (kt) | VPA/RDH (°/ft) | Rec Navaid | Navigation Specification |
|-----------|---------------------|----------|---------------|-----------|----------|---------------------|-------------------|----------------|------------|--------------------------|
| IF        | DEVNI               | -        | -             | -         | -        | +FL100              | -                 | -              | -          | RNAV 1                   |
| TF        | GJ721               | -        | 355°(001.9°)  | 15.0      | -        | +5000               | -                 | -              | -          | RNAV 1                   |
| TF        | GOLAV               | -        | 355°(001.9°)  | 5.6       | -        | +2800               | -                 | -              | -          | RNAV 1                   |

STAR instruction: DEVNI (FL100 or above) – GJ721 (5000 ft or above) – GOLAV (2800 ft or above)

**NEGAS 4K**

| Path Term | Waypoint Identifier | Fly-over | Course °M(°T) | Dist (NM) | Turn Dir | Rest Alts (ft AMSL) | Speed Limits (kt) | VPA/RDH (°/ft) | Rec Navaid | Navigation Specification |
|-----------|---------------------|----------|---------------|-----------|----------|---------------------|-------------------|----------------|------------|--------------------------|
| IF        | NEGAS               | -        | -             | -         | -        | +FL100              | -                 | -              | -          | RNAV 1                   |
| TF        | IXOLA               | -        | 214°(220.5°)  | 21.1      | -        | +5000               | -                 | -              | -          | RNAV 1                   |
| TF        | GJ570               | -        | 213°(220.1°)  | 18.6      | -        | -                   | -                 | -              | -          | RNAV 1                   |
| TF        | GOLAV               | -        | 281°(288.1°)  | 5.0       | -        | +2800               | -210              | -              | -          | RNAV 1                   |

STAR instruction: NEGAS (FL100 or above) – IXOLA (5000 ft or above) – GJ570 – GOLAV (2800 ft or above, MAX IAS 210 kt)