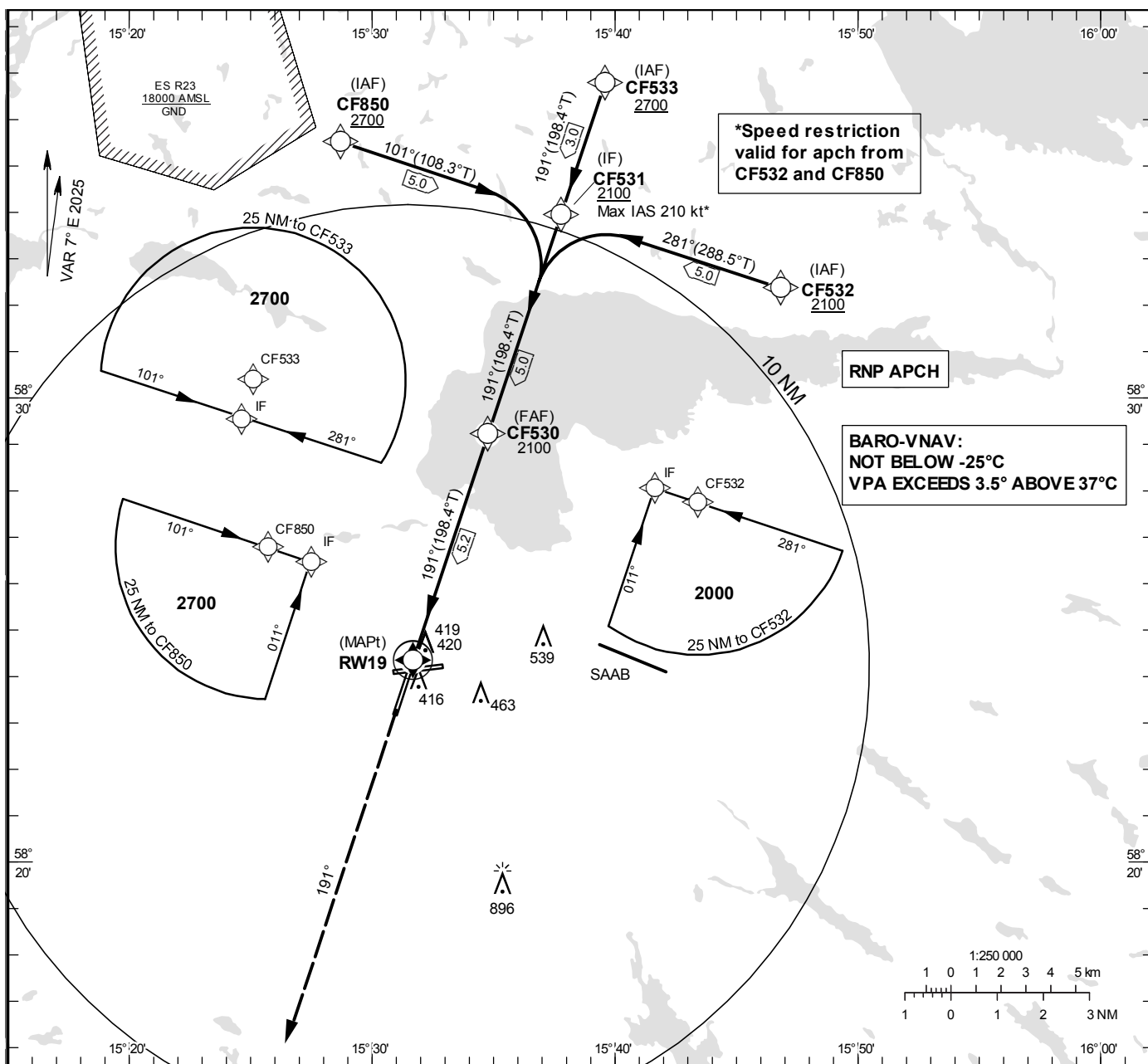


**INSTRUMENT
APPROACH
CHART – ICAO**

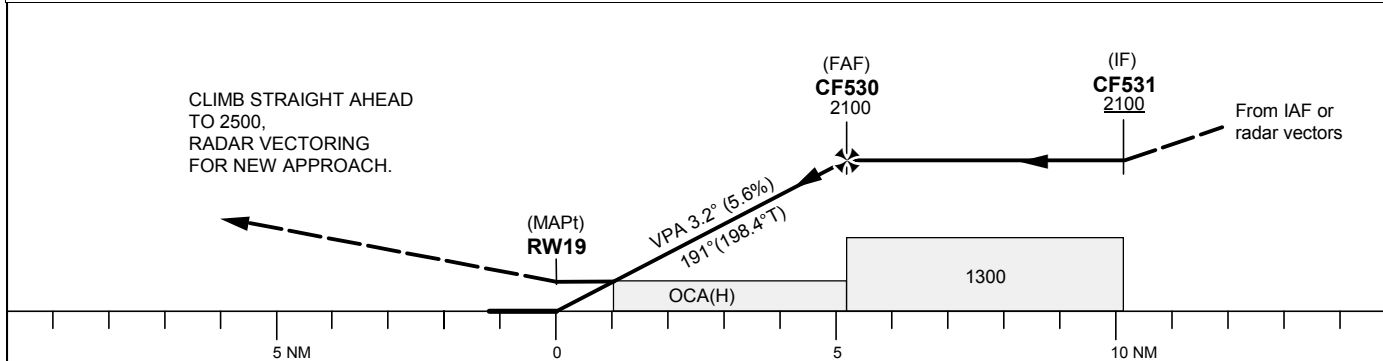
THR ELEV 295.4 ft, AD ELEV 309 ft
OCH are related to THR.
BRG are MAG (True).
ALT, HGT and ELEV in ft.

MALMEN TOWER	129.805
ÖSTGÖTA APPROACH	132.955
	135.855

EGNOS CH 96588 E 19A



TA 5000 ft AMSL RDH 55.8 ft



Cat of ACFT	OCA (H)				Final approach	Distance FAF-MAPt 5.2 NM						
	A	B	C	D		1	2	3	4	5		
LPV	547 (252)	559 (264)	570 (275)	580 (285)	Dist to RW19	690	1030	1370	1710	2050		
LNAV/VNAV	550 (255)	562 (267)	570 (275)	580 (285)	ALT	690	80	100	120	140	160	180
LNAV	670 (380)				GS	kt	80	100	120	140	160	180
Circling	760 (460)	840 (540)	940 (640)	1290 (990)	Rate of descent	ft/min	455	565	680	795	905	1020

CHANGE: Frequency

LINKÖPING/Malmen**RNP RWY 19 via CF850**

Path Desc	Waypoint Identifier	Fly-over	Course °M(°T)	Dist (NM)	Turn Dir	Altitude	Speed	VPA/RDH	Rec Navaid	Navigation Specification
IF	CF850	-	-	-	-	+2700	-	-	-	RNP APCH
TF	CF531	-	101°(108.3°)	5.0	-	-	-210	-	-	RNP APCH

RNP RWY 19 via CF533

Path Desc	Waypoint Identifier	Fly-over	Course °M(°T)	Dist (NM)	Turn Dir	Altitude	Speed	VPA/RDH	Rec Navaid	Navigation Specification
IF	CF533	-	-	-	-	+2700	-	-	-	RNP APCH
TF	CF531	-	191°(198.4°)	3.0	-	-	-	-	-	RNP APCH

RNP RWY 19 via CF532

Path Desc	Waypoint Identifier	Fly-over	Course °M(°T)	Dist (NM)	Turn Dir	Altitude	Speed	VPA/RDH	Rec Navaid	Navigation Specification
IF	CF532	-	-	-	-	+2100	-	-	-	RNP APCH
TF	CF531	-	281°(288.5°)	5.0	-	-	-210	-	-	RNP APCH

Path Desc	Waypoint Identifier	Fly-over	Course °M(°T)	Dist (NM)	Turn Dir	Altitude	Speed	VPA/RDH	Rec Navaid	Navigation Specification
IF	CF531	-	-	-	-	+2100	-	-	-	RNP APCH
TF	CF530	-	191°(198.4°)	5.0	-	+2100	-	-	-	RNP APCH
TF	RW19	Y	191°(198.4°)	5.2	-	@351	-	-3.2/56	-	RNP APCH
CA	-	-	191°(198.3°)	-	-	@2500	-	-	-	RNP APCH
VM	-	-	191°	-	-	-	-	-	-	RNP APCH

FAS Data Block

RNP RWY 19

Input data

Operation Type	0
SBAS Provider	1 (EGNOS)
Airport Identifier	ESCF
Runway	19
RunwayLetter	0 (None)
Approach PerformanceDesignator	0
Route Indicator	
ReferencePath Data Selector	0
ReferencePathIdentifier	E19A
LTP/FTP Latitude	582420.1845N
LTP/FTP Longitude	0153140.4370E
LTP/FTP Ellipsoidal Height (metres)	119.3
FPAP Latitude	582250.5575N
Delta FPAP Latitude (seconds)	-89.6270
FPAP Longitude	0153043.9035E
Delta FPAP Longitude (seconds)	-56.5335
ThresholdCrossingHeight	55.8
TCH UnitsSelector	0 (feet)
GlidepathAngle (degrees)	3.20
Course Width (metres)	105.00
Length Offset (metres)	704
HAL (metres)	40.0
VAL (metres)	50.0

Output data

Data Block	10 06 03 13 05 13 00 00 01 39 31 05 B1 A1 10 19 2A F2 A9 06 A9 18 CA 43 FD 55 46 FE 2E 02 40 01 64 58 C8 FA 63 4C 2E 23
Calculated CRC Value	634C2E23

Required Additional Data

ICAO Code	ES
LTP/FTP Orthometric Height (metres)	90.0

EUROCONTROL FAS DB tool Version 3.2.0