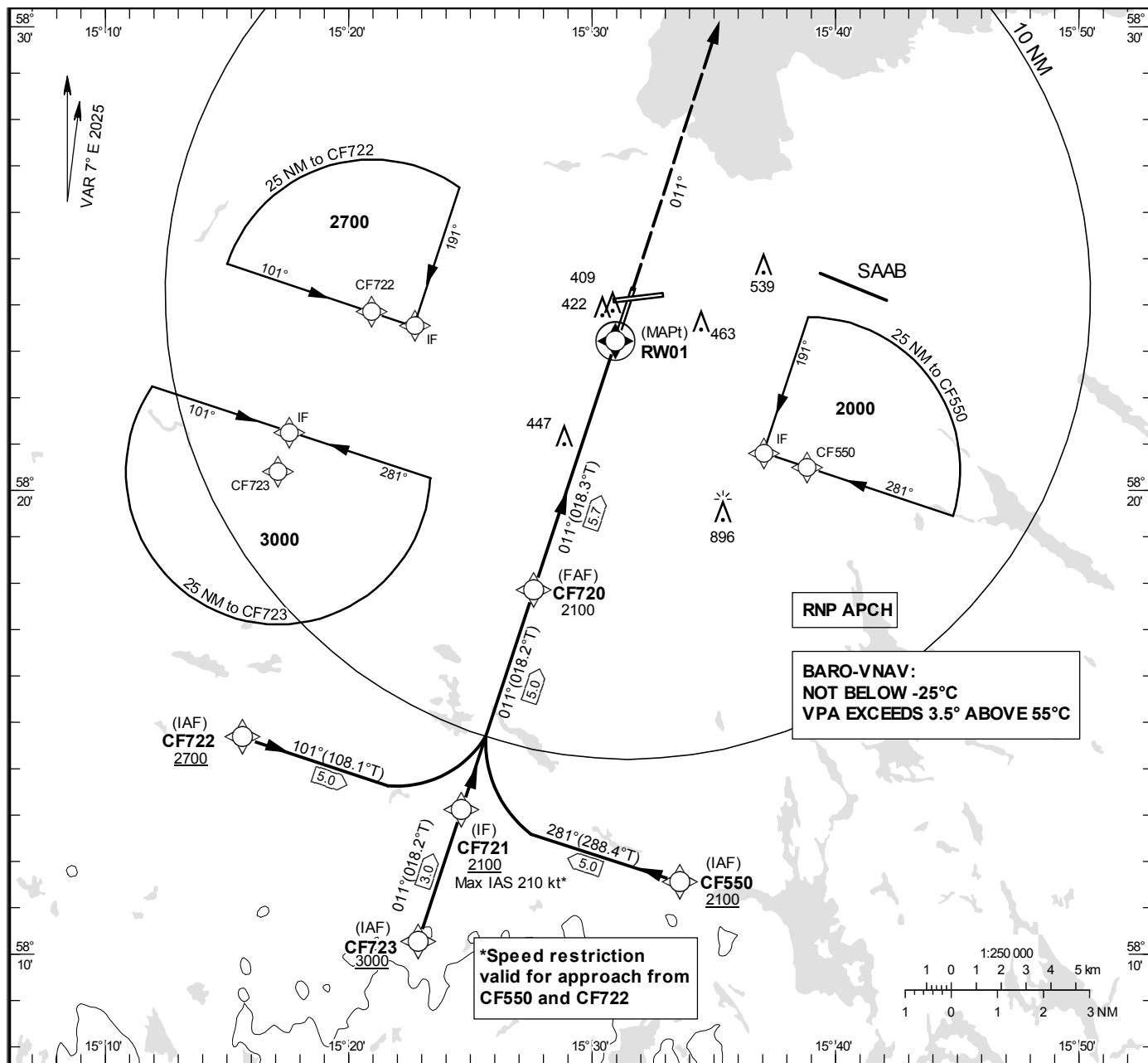


**INSTRUMENT  
APPROACH  
CHART – ICAO**

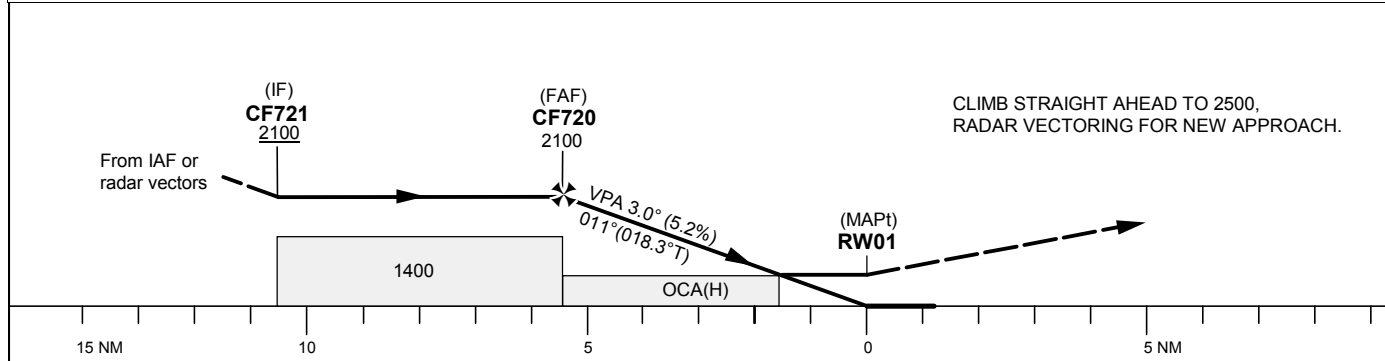
**THR ELEV 250.7 ft, AD ELEV 309 ft**  
OCH are related to THR.  
BRG are MAG (True).  
ALT, HGT and ELEV in ft.

MALMEN TOWER	129.805
ÖSTGÖTA APPROACH	132.955
	135.855

**EGNOS CH 83816 E 01A**



TA 5000 ft AMSL RDH 50 ft



Cat of ACFT	OCA (H)				Final approach	Distance FAF - MAPt 5.7 NM						
	A	B	C	D		5	4	3	2			
LPV	540(290)	552(302)	560(310)	570(320)	Dist to RW01	5	4	3	2			
LNAV/VNAV	552 (302)	565 (315)	573 (323)	583 (333)	ALT	1890	1570	1260	940			
LNAV	700 (450)				GS	kt	80	100	120	140	160	180
Circling	760 (460)	840 (540)	940 (640)	1290 (990)	Rate of descent	ft/min	425	530	635	745	850	955

CHANGE: Frequency

**LINKÖPING/Malmen****RNP RWY 01 via CF550**

Path Desc	Waypoint Identifier	Fly-over	Course °M(°T)	Dist (NM)	Turn Dir	Altitude	Speed	VPA/RDH	Rec Navaid	Navigation Specification
IF	CF550	-	-	-	-	+2100	-	-	-	RNP APCH
TF	CF721	-	281°(288.4°)	5.0	-	-	-210	-	-	RNP APCH

**RNP RWY 01 via CF723**

Path Desc	Waypoint Identifier	Fly-over	Course °M(°T)	Dist (NM)	Turn Dir	Altitude	Speed	VPA/RDH	Rec Navaid	Navigation Specification
IF	CF723	-	-	-	-	+3000	-	-	-	RNP APCH
TF	CF721	-	011°(018.2°)	3.0	-	-	-	-	-	RNP APCH

**RNP RWY 01 via CF722**

Path Desc	Waypoint Identifier	Fly-over	Course °M(°T)	Dist (NM)	Turn Dir	Altitude	Speed	VPA/RDH	Rec Navaid	Navigation Specification
IF	CF722	-	-	-	-	+2700	-	-	-	RNP APCH
TF	CF721	-	101°(108.1°)	5.0	-	-	-210	-	-	RNP APCH

Path Desc	Waypoint Identifier	Fly-over	Course °M(°T)	Dist (NM)	Turn Dir	Altitude	Speed	VPA/RDH	Rec Navaid	Navigation Specification
IF	CF721	-	-	-	-	+2100	-	-	-	RNP APCH
TF	CF720	-	011°(018.2°)	5.0	-	+2100	-	-	-	RNP APCH
TF	RW01	Y	011°(018.3°)	5.7	-	@301	-	-3.0/50	-	RNP APCH
CA	-	-	011°(018.3°)	-	-	@2500	-	-	-	RNP APCH
VM	-	-	011°	-	-	-	-	-	-	RNP APCH

## FAS Data Block

## RNP RWY 01

## Input data

Operation Type	0
SBAS Provider	1 (EGNOS)
Airport Identifier	ESCF
Runway	01
RunwayLetter	0 (None)
Approach PerformanceDesignator	0
Route Indicator	
ReferencePath Data Selector	0
ReferencePathIdentifier	E01A
LTP/FTP Latitude	582312.2500N
LTP/FTP Longitude	0153057.5815E
LTP/FTP Ellipsoidal Height (metres)	105.8
FPAP Latitude	582424.3465N
Delta FPAP Latitude (seconds)	72.0965
FPAP Longitude	0153143.0705E
Delta FPAP Longitude (seconds)	45.4890
ThresholdCrossingHeight	50.0
TCH UnitsSelector	0 (feet)
GlidepathAngle (degrees)	3.00
Course Width (metres)	105.00
Length Offset (metres)	136
HAL (metres)	40.0
VAL (metres)	50.0

## Output data

Data Block	10 06 03 13 05 01 00 00 01 31 30 05 F4 8E 0E 19 5B A3 A8 06 22 18 41 33 02 62 63 01 F4 01 2C 01 64 11 C8 FA 14 B4 81 4A
Calculated CRC Value	14B4814A

## Required Additional Data

ICAO Code	ES
LTP/FTP Orthometric Height (metres)	76.4

EUROCONTROL FAS DB tool Version 3.2.0