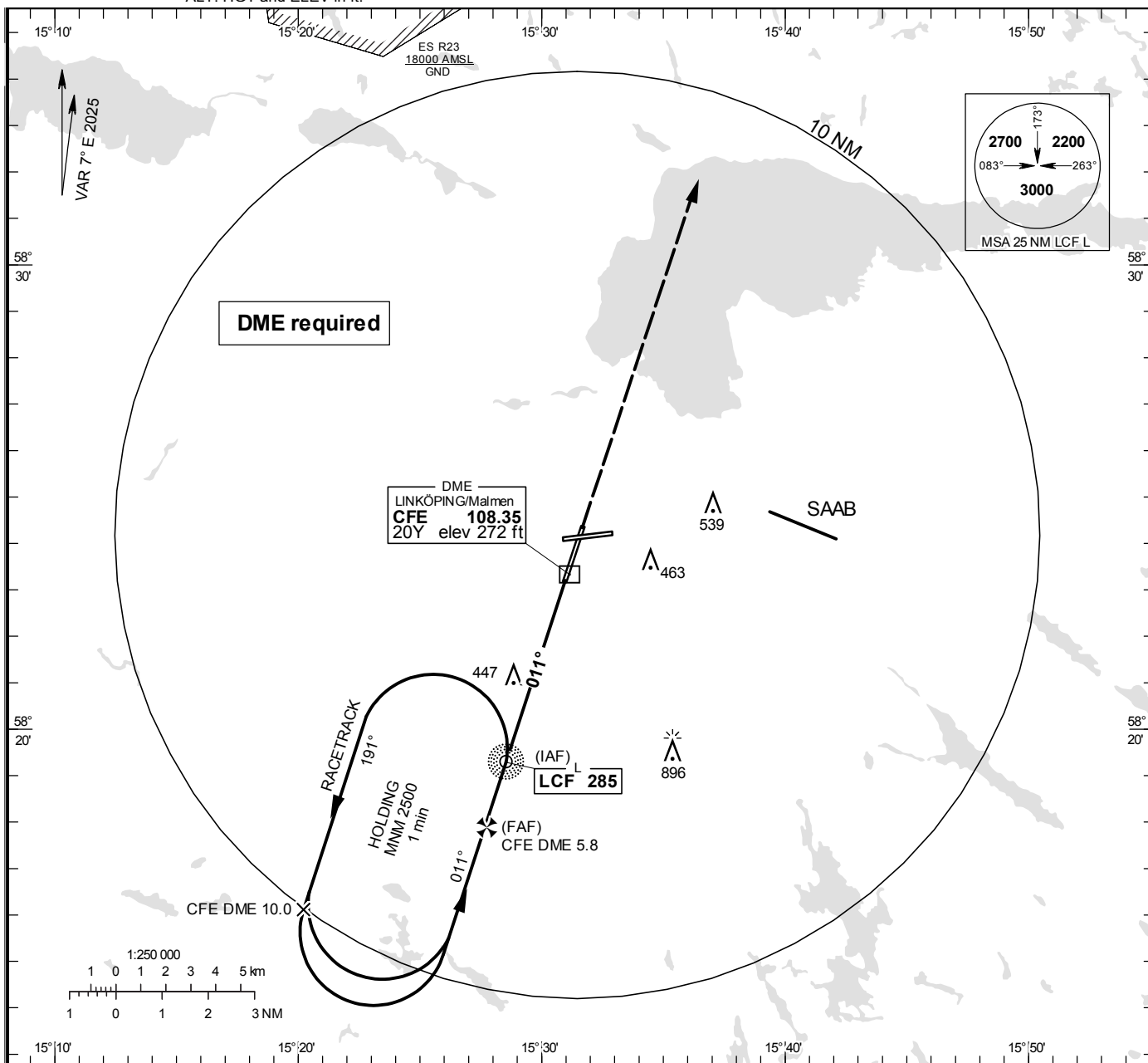


LINKÖPING/Malmen
NDB z RWY 01

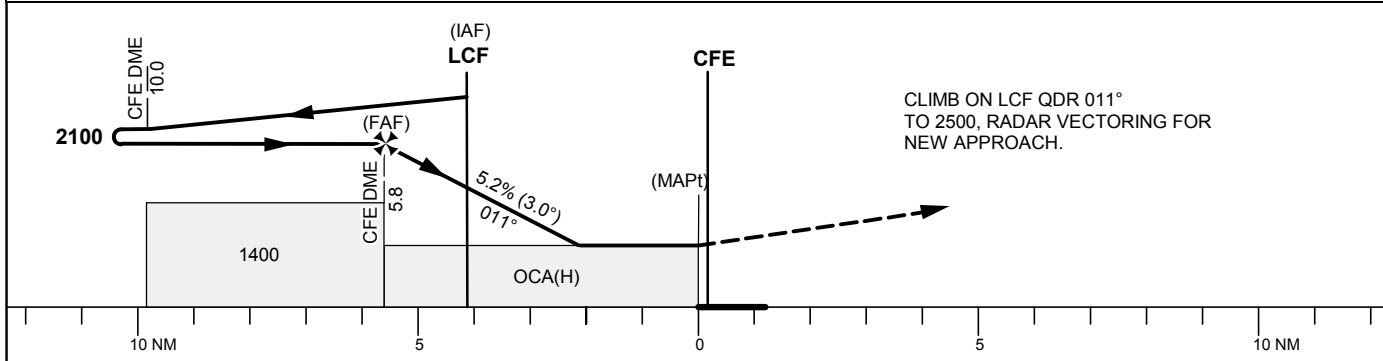
INSTRUMENT APPROACH CHART - ICAO

THR ELEV 250.7 ft, AD ELEV 309 ft
OCH are related to THR.
Circling OCH are related to AD ELEV.
BRG are MAG
ALT. HGT and ELEV in ft.

MALMEN TOWER	129.805
ÖSTGÖTA APPROACH	132.955
	135.855



TA 5000 ft AMSL



Cat of ACFT	OCA (H)				Final approach		Distance FAF-MAPt 5.6 NM					
	A	B	C	D	DME CFE NM	ALT	5	4	3	2		
Straight-in Approach	700 (450)				1850	1530	1210	890				
Circling	760 (460)	840 (540)	940 (640)	1290 (990)	kt	80	100	120	140	160	180	
					Time	min:s	4:14	3:23	2:50	2:25	2:07	1:53
					Rate of descent	ft/min	425	530	635	745	850	955

CHANGE: Frequency, MSA