

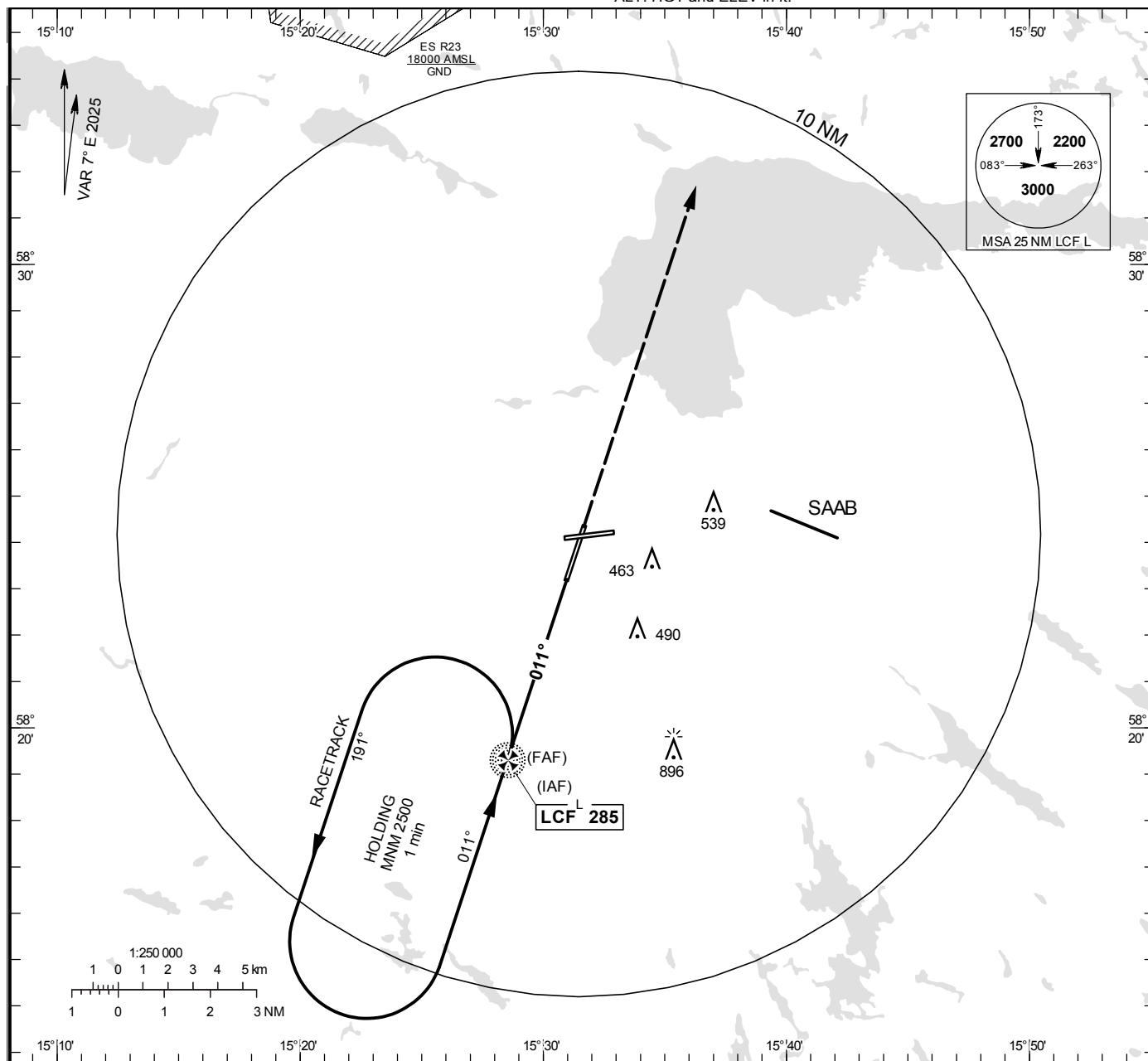
**LINKÖPING/Malmen**

**NDB y RWY 01**

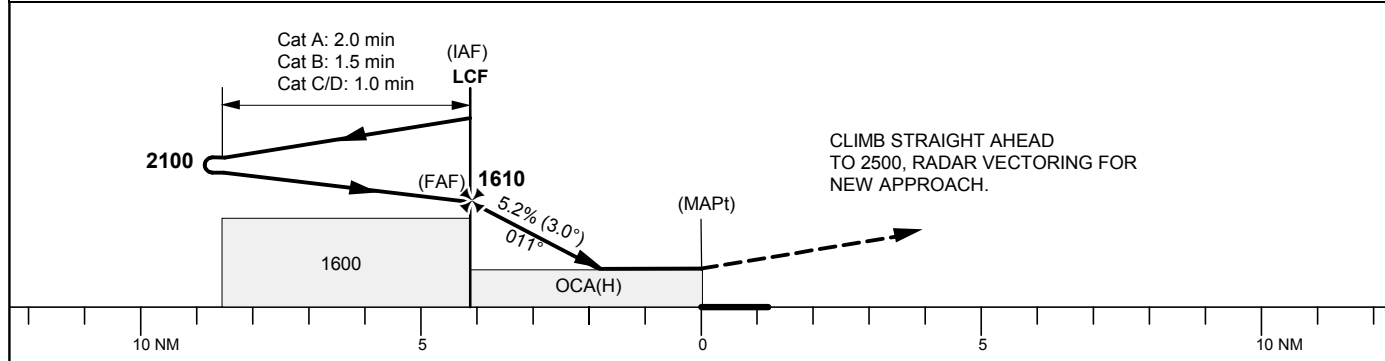
MALMEN TOWER	129.805
ÖSTGÖTA APPROACH	132.955
	135.855

**THR ELEV 250.7 ft, AD ELEV 309 ft**  
 OCH are related to THR.  
 Circling OCH are related to AD ELEV.  
 BRG are MAG  
 ALT, HGT and ELEV in ft.

**INSTRUMENT  
APPROACH  
CHART – ICAO**



**TA 5000 ft AMSL**



Cat of ACFT	OCA (H)				Final approach				Distance FAF-MAPt 4.1 NM											
	A	B	C	D	DME CFE NM	5	4	3	2	5	4	3	2							
Straight-in Approach	740 (490)				ALT	1850	1530	1210	890	GS	80	100	120	140	160	180				
Circling	760 (460)	840 (540)	940 (640)	1290 (990)	Time	min:s	3:06	2:29	2:04	1:46	1:33	1:23	Rate of descent	ft/min	425	530	635	745	850	955

CHANGE: Frequency, MSA