

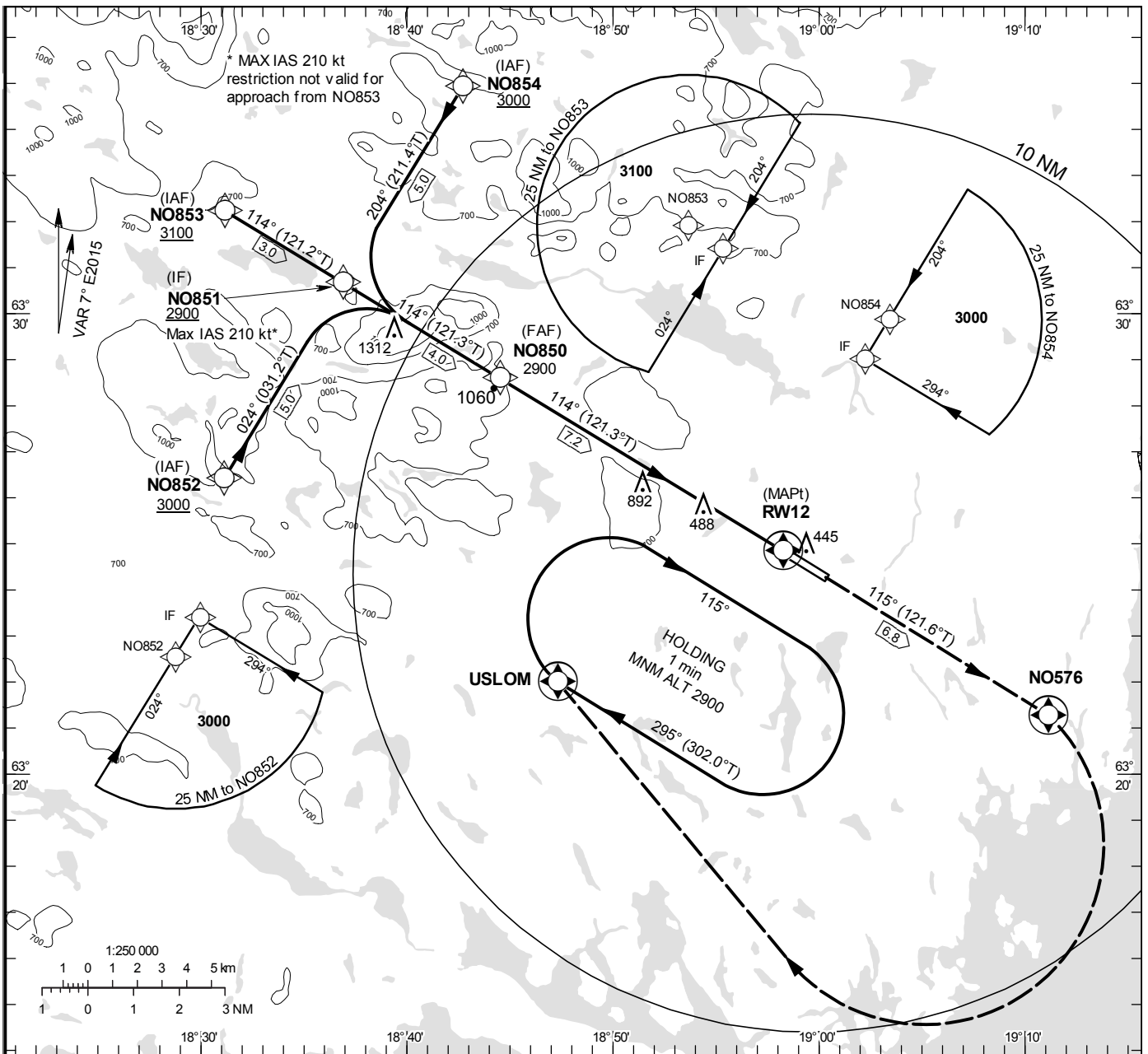
**INSTRUMENT
APPROACH
CHART – ICAO**

THR ELEV 354.1 ft, AD ELEV 355 ft
 OCH are related to THR.
 BRG are MAG (True).
 ALT, HGT and ELEV in ft.

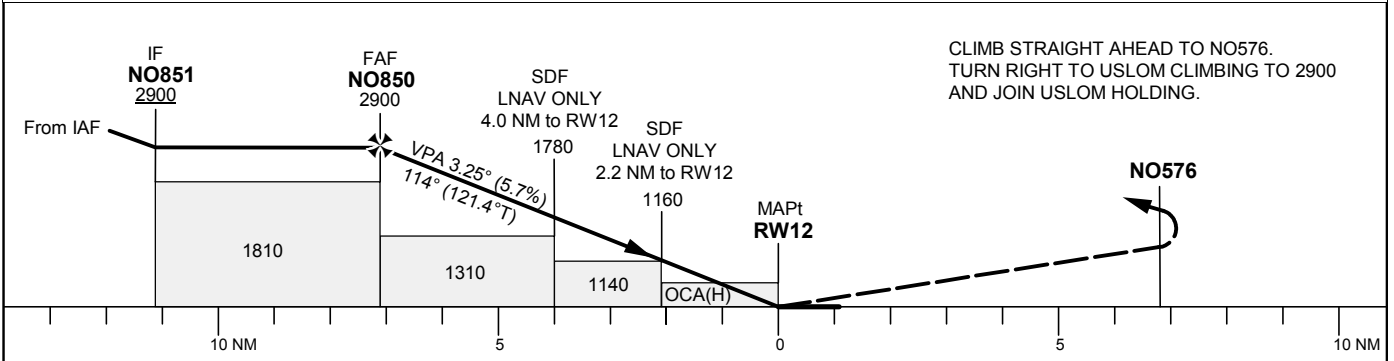
ÖVIK TOWER 122.255

RNP RWY 12

EGNOS CH 57185 E 12A



TA 5000 ft AMSL RDH 50 ft



CLIMB STRAIGHT AHEAD TO NO576.
 TURN RIGHT TO USLOM CLIMBING TO 2900
 AND JOIN USLOM HOLDING.

Cat of ACFT	OCA (H)				Final approach Dist to RWY 12	Distance FAF-MAPt 7.2 NM						
	A	B	C	D		7	6	5	4	3	2	1
LPV	577 (223)	590 (236)	599 (245)	611 (257)	ALT	2820	2470	2130	1780	1440	1090	750
LNAV	740 (390)				GS	kt	80	100	120	140	160	180
					Rate of descent	ft/min	460	575	690	805	920	1035

RNP RWY 12 via IAF NO852

Path Desc	Waypoint Identifier	Fly-over	Course °M(°T)	Dist (NM)	Turn Dir	Altitude	Speed	VPA/RDH	Rec Navaid	Navigation Specification
IF	NO852	-	-	-	-	+3000	-	-	-	RNP APCH
TF	NO851	-	024°(031.2°)	5.0	-	+2900	-210	-	-	RNP APCH

RNP RWY 12 via IAF NO853

Path Desc	Waypoint Identifier	Fly-over	Course °M(°T)	Dist (NM)	Turn Dir	Altitude	Speed	VPA/RDH	Rec Navaid	Navigation Specification
IF	NO853	-	-	-	-	+ 3100	-	-	-	RNP APCH
TF	NO851	-	114°(121.2°)	3.0	-	+2900	-	-	-	RNP APCH

RNP RWY 12 via IAF NO854

Path Desc	Waypoint Identifier	Fly-over	Course °M(°T)	Dist (NM)	Turn Dir	Altitude	Speed	VPA/RDH	Rec Navaid	Navigation Specification
IF	NO854	-	-	-	-	+3000	-	-	-	RNP APCH
TF	NO851	-	204°(211.4°)	5.0	-	+2900	-210	-	-	RNP APCH

Path Desc	Waypoint Identifier	Fly-over	Course °M(°T)	Dist (NM)	Turn Dir	Altitude	Speed	VPA/RDH	Rec Navaid	Navigation Specification
IF	NO851	-	-	-	-	+2900	-	-	-	RNP APCH
TF	NO850	-	114°(121.3)	4.0	-	@2900	-	-	-	RNP APCH
TF	RW12	Y	114°(121.4°)	7.2	-	@404	-	-3.25/50	-	RNP APCH
TF	NO576	Y	115°(121.6°)	6.8	-	-	-	-	-	RNP APCH
DF	USLOM	Y	-	-	R	+2900	-	-	-	RNP APCH
HM	USLOM	Y	295°(302.0°)	-	R	+2900	-	-	-	RNAV 1

FAS Data Block

RNP RWY 12

Input data

Operation Type	0
SBAS Provider	1
Airport Identifier	ESNO
Runway	12
Runway Direction	0
Approach Performance Designator	0
Route Indicator	
Reference Path Data Selector	0
Reference Path Identifier	E12A
LTP/FTP Latitude	632450.3700N
LTP/FTP Longitude	0185815.7800E
LTP/FTP Ellipsoidal Height (metres)	131.7
FPAP Latitude	632416.2500N
Delta FPAP Latitude (seconds)	-34.1200
FPAP Longitude	0190019.4900E
Delta FPAP Longitude (seconds)	123.7100
Threshold Crossing Height	50.0
TCH Units Selector	0
Glidepath Angle (degrees)	3.25
Course Width (metres)	105.00
Length Offset (metres)	0
HAL (metres)	40.0
VAL (metres)	50.0

Output data

Data Block	10 0F 0E 13 05 0C 00 00 01 32 31 05 84 DE 36 1B C8 38 24 08 25 19 70 F5 FE 7C C6 03 F4 01 45 01 64 00 C8 FA 6E 3E A9 B2
Calculated CRC Value	6E3EA9B2

Required Additional Data

ICAO Code	ES
LTP/FTP Orthometric Height (metres)	108.0
FPAP Orthometric Height (metres)	100.9