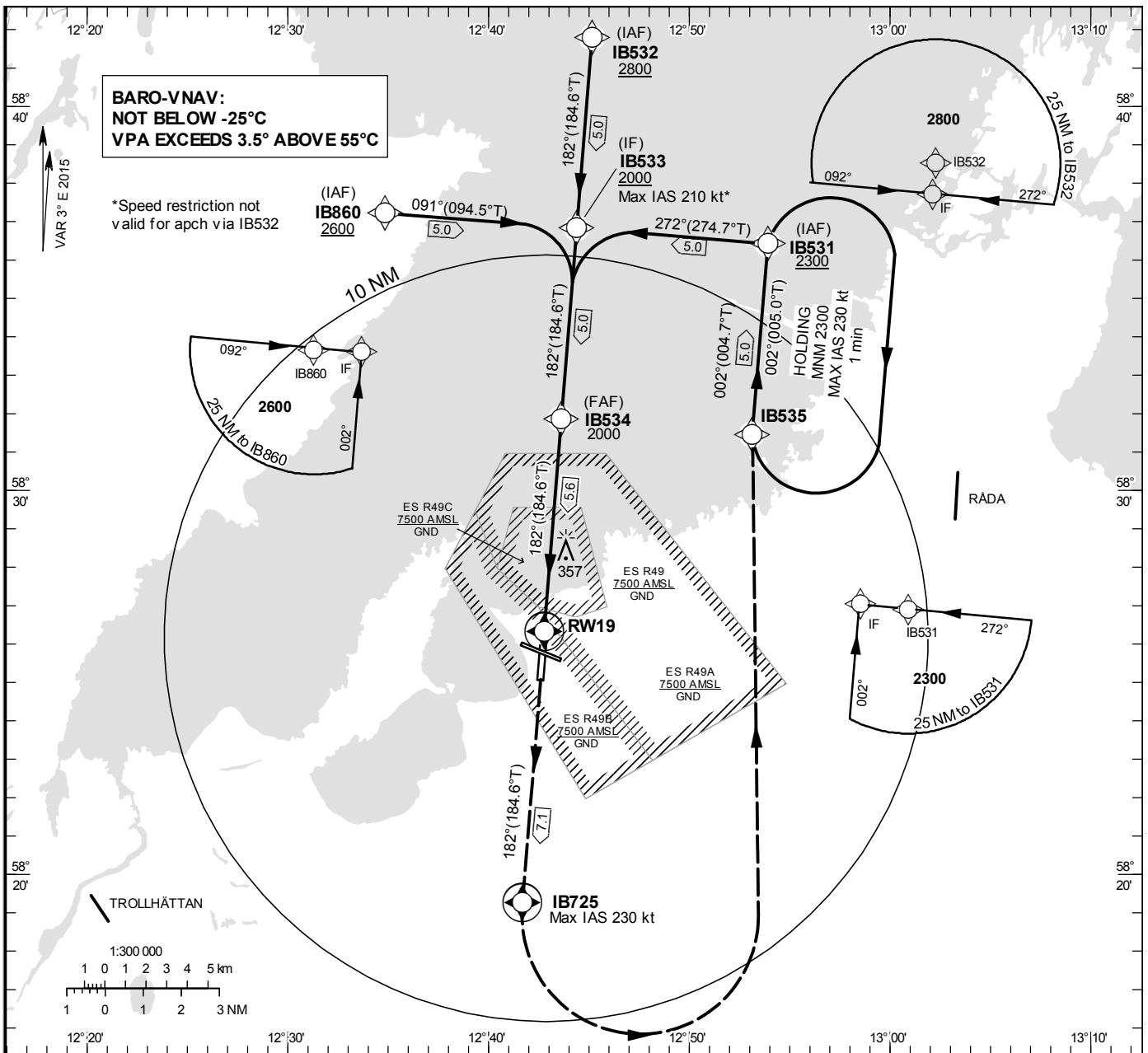


**INSTRUMENT APPROACH CHART – ICAO**  
**THR ELEV 175.3 ft, AD ELEV 181 ft**  
 OCH are related to THR.  
 BRG are MAG (True).  
 ALT, HGT and ELEV in ft.

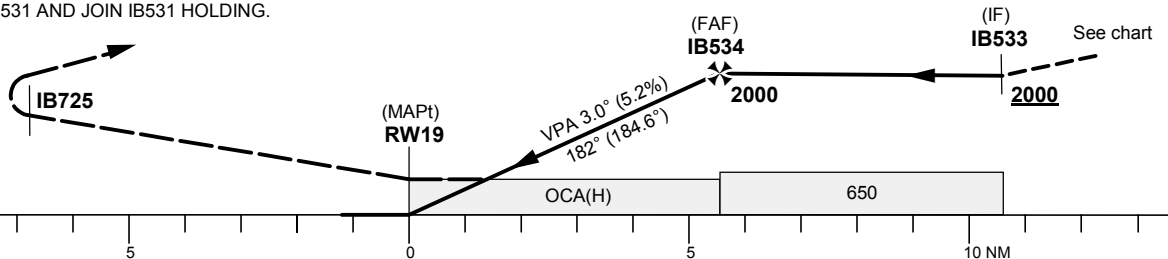
SÄTENÄS TOWER 128.200  
 SÄTENÄS APPROACH 134.550

RNP RWY 19



TA 5000 ft AMSL RDH 50.0 ft

CLIMB STRAIGHT AHEAD TO IB725,  
 TURN LEFT TO IB535 (MAX IAS 230 kt),  
 CLIMBING TO 2300.  
 CONTINUE TO IB531 AND JOIN IB531 HOLDING.



Cat of ACFT	OCA (H)				Final approach				Distance FAF-MAPT 5.6 NM								
	A	B	C	D	Dist to RW19 (NM)	5	4	3	2	5	4	3	2				
LNAV/VNAV	490(320)	500(330)	510(340)	520(350)	ALT	1820	1500	1180	860	GS	kt	80	100	120	140	160	180
LNAV	610(440)				Rate of descent	ft/min	425	530	635	745	850	955					

## RNP RWY 19 via IB860

Path Desc	Waypoint Identifier	Fly-over	Course °M(°T)	Dist (NM)	Turn Dir	Altitude	Speed	VPA/RDH	Rec Navaid	Navigation Specification
IF	IB860	-	-	-	-	+2600	-	-	-	RNP APCH
TF	IB533	-	091°(094.5°)	5.0	-	+2000	-210	-	-	RNP APCH

## RNP RWY 19 via IB531

Path Desc	Waypoint Identifier	Fly-over	Course °M(°T)	Dist (NM)	Turn Dir	Altitude	Speed	VPA/RDH	Rec Navaid	Navigation Specification
IF	IB531	-	-	-	-	+2300	-	-	-	RNP APCH
TF	IB533	-	272°(274.7°)	5.0	-	+2000	-210	-	-	RNP APCH

## RNP RWY 19 via IB532

Path Desc	Waypoint Identifier	Fly-over	Course °M(°T)	Dist (NM)	Turn Dir	Altitude	Speed	VPA/RDH	Rec Navaid	Navigation Specification
IF	IB532	-	-	-	-	+2800	-	-	-	RNP APCH
TF	IB533	-	182°(184.6°)	5.0	-	+2000	-	-	-	RNP APCH

Path Desc	Waypoint Identifier	Fly-over	Course °M(°T)	Dist (NM)	Turn Dir	Altitude	Speed	VPA/RDH	Rec Navaid	Navigation Specification
IF	IB533	-	-	-	-	+2000	-	-	-	RNP APCH
TF	IB534	-	182°(184.6°)	5.0	-	@2000	-	-	-	RNP APCH
TF	RW19	Y	182°(184.6°)	5.6	-	@225	-	-3.0/50	-	RNP APCH
TF	IB725	Y	182°(184.6°)	7.1	-	+1500	-230	-	-	RNP APCH
DF	IB535	-	-	-	L	-	-	-	-	RNP APCH
TF	IB531	-	002°(004.7°)	5.0	-	+2300	-	-	-	RNP APCH
HM	IB531	Y	002°(005.0°)	-	R	+2300	-230	-	-	RNAV 1