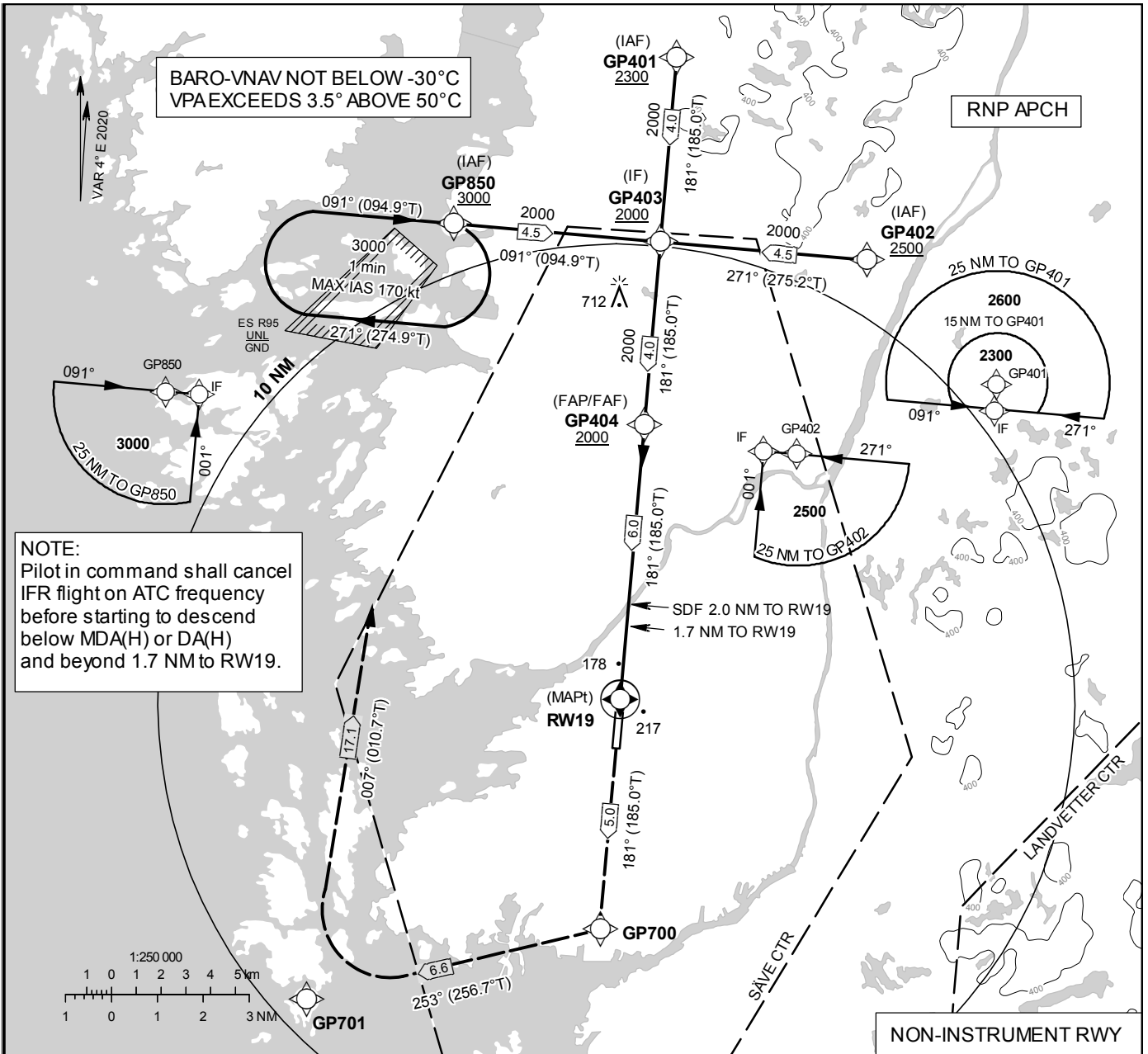


INSTRUMENT APPROACH CHART – ICAO
THR ELEV 48 ft, AD ELEV 59 ft
 OCH are related to THR.
 BRG are MAG (True).
 ALT, HGT and ELEV in ft.

GÖTEBORG APPROACH	124.680
	124.205
SÄVE TOWER	119.055

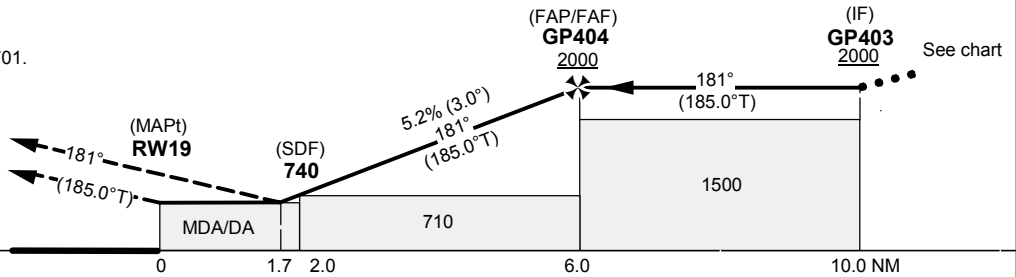
RNP RWY 19
EGNOS Ch94664 E19A



TA 5000 ft AMSL *Timing not authorized for defining MAPt

NOTE:
 VFR BELOW MDA(H) OR DA(H) AND BEYOND 1.7 NM TO RW19 DUE TO NON-INSTRUMENT RUNWAY

MISSED APCH:
 CLIMB TO GP700. TURN RIGHT TO GP701.
 TURN RIGHT TO GP850.
 ENTER GP850 HOLDING AT 3000.



OCA (H)		DAY		NIGHT		Final approach	Distance FAF-MAPt 6.0 NM*				
Cat of ACFT		A	B	A	B	Dist to RW19	NM	5	4	3	2
MDA(H) or DA(H) straight-in	LPV	650 (610)		1150 (1110)		ALT	ft	1690	1370	1060	740
	LNAV/VNAV					GS	kt	70	90	100	120
	LNAV					Time	min:s	5:08	4:00	3:36	3:00
						Rate of descent	ft/min	370	480	530	635

RNP RWY 19

SN	Path Desc	WPT ID	Fly-over	Course °M(°T)	Mag Var	Dist (NM)	Rec Navaid	Turn Dir	ALT (ft)	Speed (kt)	VPA	Arc Centre Radius	Nav Spec
010	IF	GP850	-	-	-4.0	-	-	-	+3000	-	-	-	RNP APCH
020	TF	GP403	-	-	-4.0	4.5	-	-	+2000	-	-	-	RNP APCH
010	IF	GP401	-	-	-4.0	-	-	-	+2300	-	-	-	RNP APCH
020	TF	GP403	-	-	-4.0	4.0	-	-	+2000	-	-	-	RNP APCH
010	IF	GP402	-	-	-4.0	-	-	-	+2500	-	-	-	RNP APCH
020	TF	GP403	-	-	-4.0	4.5	-	-	+2000	-	-	-	RNP APCH
030	TF	GP404	-	-	-4.0	4.0	-	-	+2000	-	-	-	RNP APCH
040	TF	RW19	Y	-	-4.0	6.0	-	-	-	-	-3.0/15	-	RNP APCH
050	TF	GP700	-	-	-4.0	5.0	-	-	-	-	-	-	RNP APCH
060	TF	GP701	-	-	-4.0	6.6	-	-	-	-	-	-	RNP APCH
070	TF	GP850	-	-	-4.0	17.1	-	-	3000	-	-	-	RNP APCH
080	HM	GP850	-	091°(094.9°T)	-4.0	1 min	-	R	+3000	-170	-	-	RNP APCH

Note: Recommended RNAV procedure coding is based on ARINC 424-15 and is provided solely to indicate which procedure design protection areas were used in the Instrument Flight Procedure Design process.

Note: The use of SBAS/GNSS geometric altitude as a source of altitude for approaches to LNAV/VNAV minima is permitted only for aircraft specifically certified for this type of operation. See "EASA CS ACNS.C.PBN.560" for additional information.

FAS Data Block

RNP RWY 19

Operation Type	0
SBAS Provider	1
Airport Identifier	ESGP
Runway	RW19
Approach Performance Designator	0
Route Indicator	-
Reference Path Data Selector	0
Reference Path Identifier	E19A
LTP/FTP Latitude	574658.4000N
LTP/FTP Longitude	0115217.8120E
LTP/FTP Ellipsoidal Height	50.3
FPAP Latitude	574603.8205N
FPAP Longitude	0115208.8685E
Threshold Crossing Height	15
TCH Units	M
Glide path Angle	3.0
Course Width at threshold	105
Length Offset	0
Horizontal alert limit (HAL)	40
Vertical alert limit (VAL)	35
PRECISION APPROACH PATH CRC REMAINDER	65D4B816

NON FAS DATA BLOCK FIELDS

LTP Orthometric Height	14.6
FPAP Orthometric Height	14.6