

**VISUAL APPROACH CHART – ICAO**

1:250000  
1 0 1 2 3 4 5 km  
1 0 1 2 3 NM

**AD ELEV 164 FEET**

ELEV and ALT in ft  
HGT in ft above AD ELEV

**TA 5000 AMSL**

**VISBY TOWER**

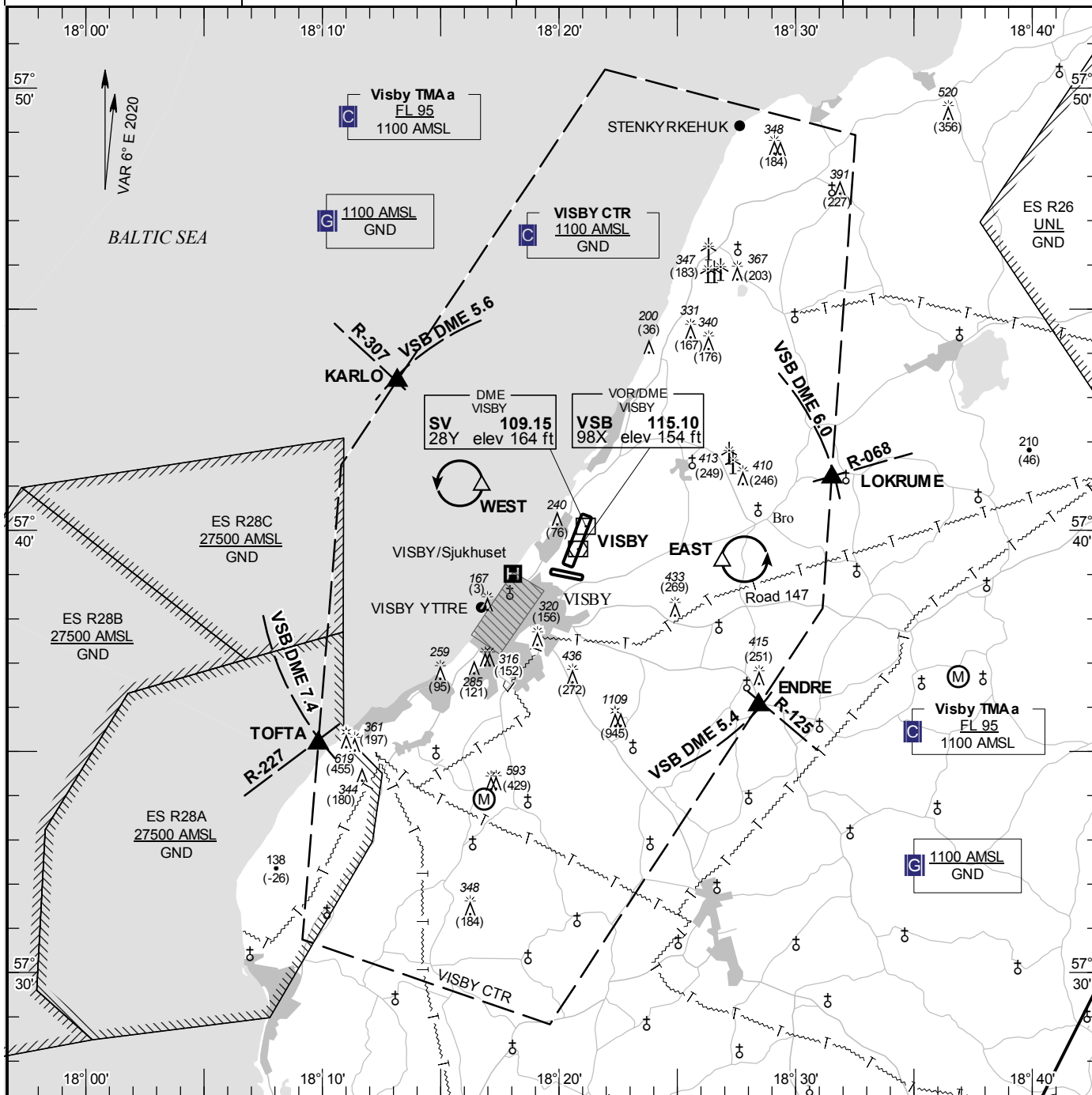
**120.305**

**VISBY APPROACH**

**126.155**

**AD 2 ESSV 6-1**

**VISBY SWEDEN**



**Communication failure**

- 1 SQUAWK 7600
- 2 Enter CTR via KARLO/TOFTA – Holding WEST or via ENDRE/LOKRUME – Holding EAST at or below 1000 ft AMSL to traffic circuit. Transmit blind your intentions.
- 3 Flash LDG-lights and watch TWR for optical signals.

RWY NR	THR ELEV	PAPI (MEHT)
03	140 ft	Left/3.00° (56 ft)
21	137.0 ft	Left/3.00° (62 ft)

**Entry / exit point**

KARLO	574322N 0181310E
LOKRUME	574111N 0181312E
ENDRE	573602N 0182826E
TOFTA	573510N 0180950E

**Holding**

- EAST:** Hold north of road 147 and south of BRO church, east of point 573917N 0182654E
- WEST:** Hold 3NM WNW of the aerodrome over the sea, west of point 574100N 0181643E

**Legend**  
See GEN 2.3

**Remark**

Noise sensitive area should be avoided below 2000 ft AMSL