

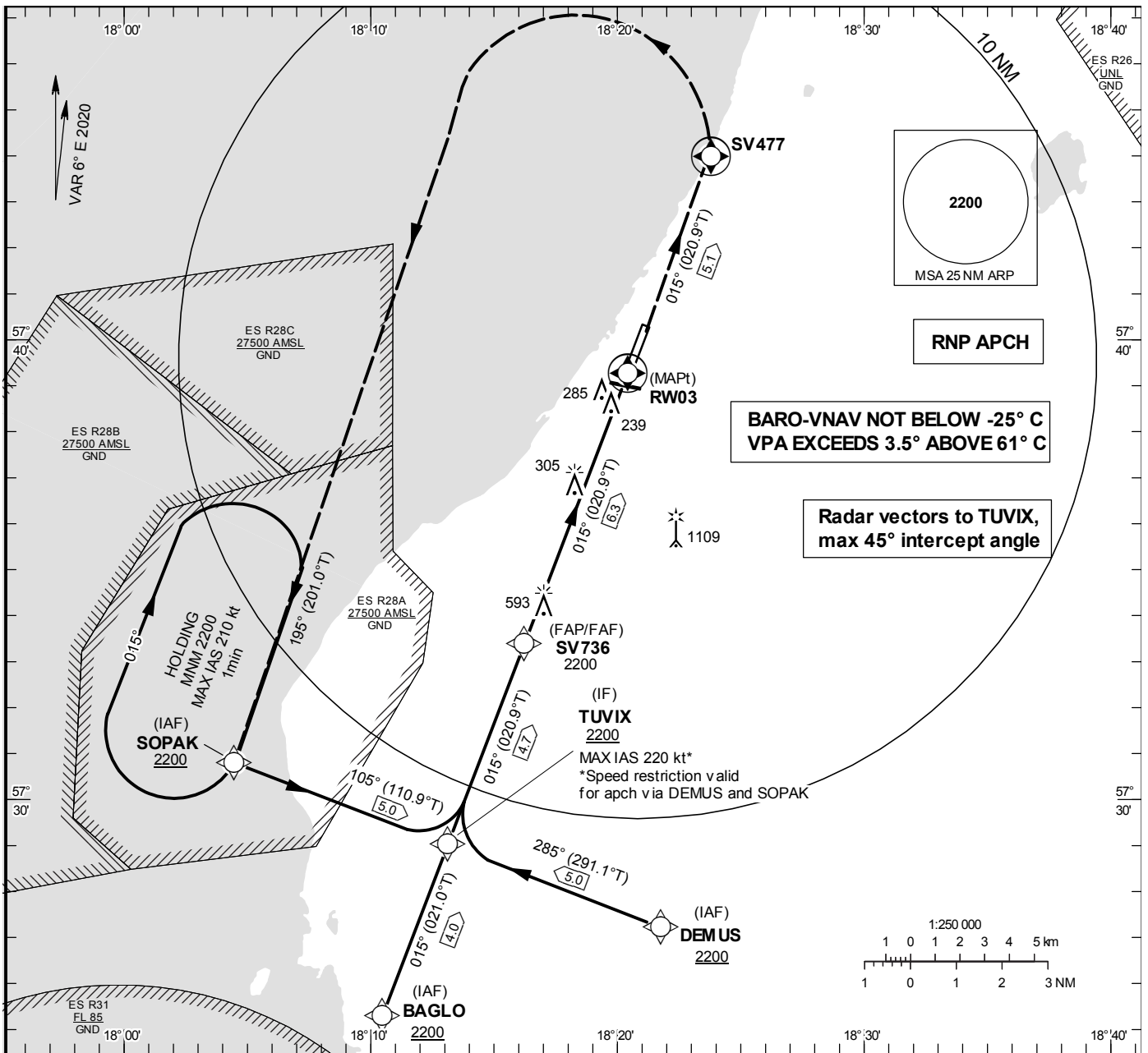
INSTRUMENT APPROACH CHART – ICAO

THR ELEV 140 ft, AD ELEV 164 ft
 OCH are related to THR.
 BRG are MAG (True).
 ALT, HGT and ELEV in ft.

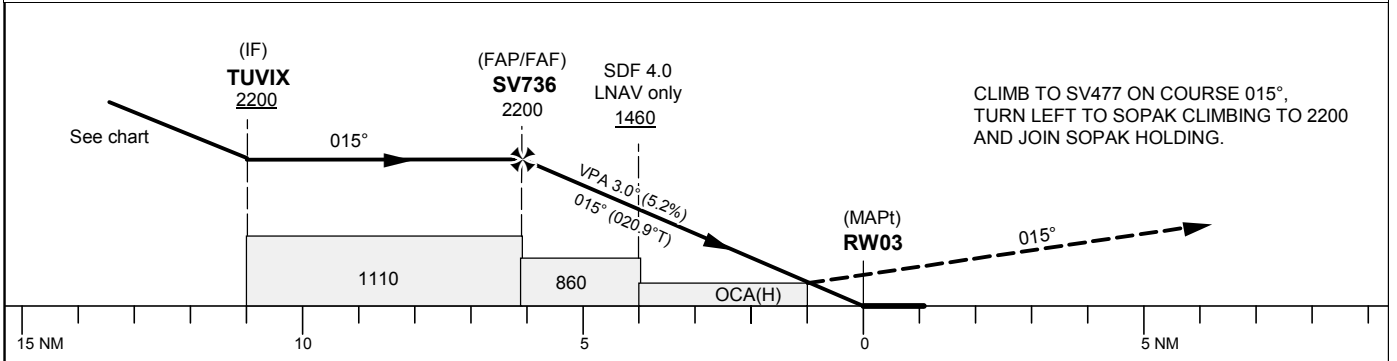
VISBY TOWER	120.305
VISBY APPROACH	126.155

RNP RWY 03

EGNOS CH 98997 E 03A



TA 5000 ft AMSL RDH 50 ft



Cat of ACFT	OCA (H)				Final approach	Distance FAF-MAPt 6.3 NM						
	A	B	C	D		Dist to RW 03	NM	6	5	4	3	2
LPV	374 (234)	384 (244)	394 (254)	404 (264)	ALT	ft	2101	1782	1464	1145	827	
LNAV/VNAV	420 (280)	430 (290)	440 (300)	450 (310)	GS	kt	80	100	120	140	160	180
LNAV	590 (450)				Rate of descent	ft/min	425	530	635	745	850	955

RNP RWY 03 via BAGLO

Path Term	Waypoint Identifier	Fly-over	Course °M(°T)	Dist (NM)	Turn Dir	Rest Alts (ft AMSL)	Speed Limits (kt)	VPA/RDH	Rec Navaid	Navigation Specification
IF	BAGLO	-	-	-	-	+2200	-	-	-	RNP APCH
TF	TUVIX	-	015°(021.0°)	4.0	-	+2200	-	-	-	RNP APCH

RNP RWY 03 via DEMUS

Path Term	Waypoint Identifier	Fly-over	Course °M(°T)	Dist (NM)	Turn Dir	Rest Alts (ft AMSL)	Speed Limits (kt)	VPA/RDH	Rec Navaid	Navigation Specification
IF	DEMUS	-	-	-	-	+2200	-	-	-	RNP APCH
TF	TUVIX	-	285° (291.1°)	5.0	-	+2200	-220	-	-	RNP APCH

RNP RWY 03 via SOPAK

Path Term	Waypoint Identifier	Fly-over	Course °M(°T)	Dist (NM)	Turn Dir	Rest Alts (ft AMSL)	Speed Limits (kt)	VPA/RDH	Rec Navaid	Navigation Specification
IF	SOPAK	-	-	-	-	+2200	-	-	-	RNP APCH
TF	TUVIX	-	105° (110.9°)	5.0	-	+2200	-220	-	-	RNP APCH

Path Term	Waypoint Identifier	Fly-over	Course °M(°T)	Dist (NM)	Turn Dir	Rest Alts (ft AMSL)	Speed Limits (kt)	VPA/RDH	Rec Navaid	Navigation Specification
TF	TUVIX	-	-	-	-	+2200	-	-	-	RNP APCH
TF	SV736	-	015° (020.9°)	4.7	-	@2200	-	-	-	RNP APCH
TF	RW03	Y	015° (020.9°)	6.3	-	@190	-	-3.0/50	-	RNP APCH
CF	SV477	Y	015° (020.9°)	5.1	-	-	-	-	VSB	RNP APCH
DF	SOPAK	Y	-	-	L	-	-	-	-	RNP APCH
HM	SOPAK	-	195° (201.0°)	-	R	+2200	-210	-	-	RNAV 1

FAS Data Block

RNP RWY 03

Input data

Operation Type	0
SBAS Provider	1 (EGNOS)
Airport Identifier	ESSV
Runway	03
Runway Letter	0 (None)
Approach Performance Designator	0
Route Indicator	
Reference Path Data Selector	0
Reference Path Identifier	E03A
LTP/FTP Latitude	573915.8900N
LTP/FTP Longitude	0182024.7500E
LTP/FTP Ellipsoidal Height (metres)	67.7
FPAP Latitude	574016.2500N
Delta FPAP Latitude (seconds)	60.3600
FPAP Longitude	0182107.9600E
Delta FPAP Longitude (seconds)	43.2100
Threshold Crossing Height	50.0
TCH Units Selector	0 (feet)
Glidepath Angle (degrees)	3.00
Course Width (metres)	105.00
Length Offset (metres)	0
HAL (metres)	40.0
VAL (metres)	50.0

Output data

Data Block	10 16 13 13 05 03 00 00 01 33 30 05 64 1A BE 18 5C EA DE 07 A5 16 90 D7 01 94 51 01 F4 01 2C 01 64 00 C8 FA AB EB E0 B7
Calculated CRC Value	ABEBE0B7
Supplied CRC Value	ABEBE0B7
Comparison Result	OK