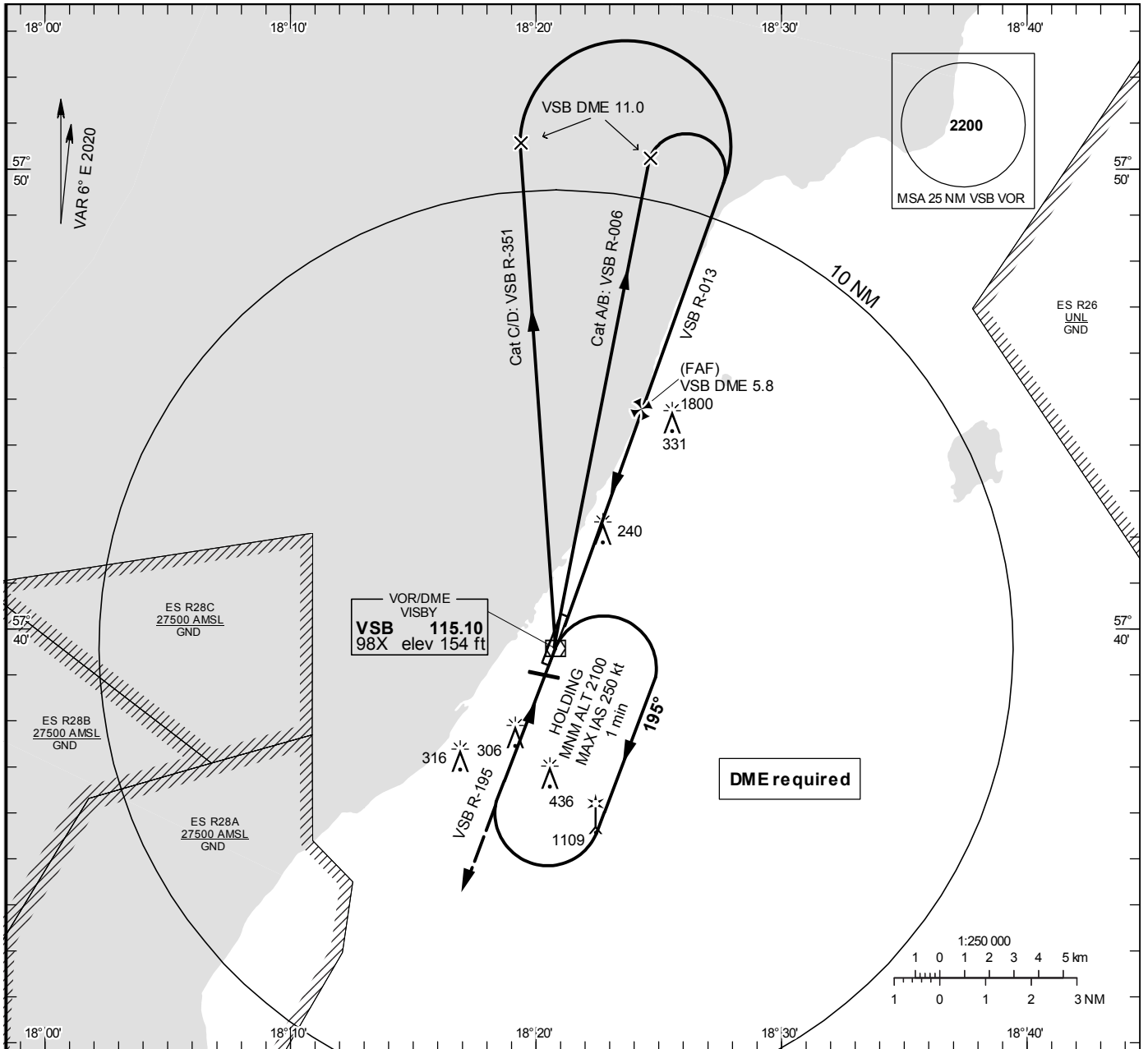


**INSTRUMENT  
APPROACH  
CHART – ICAO**

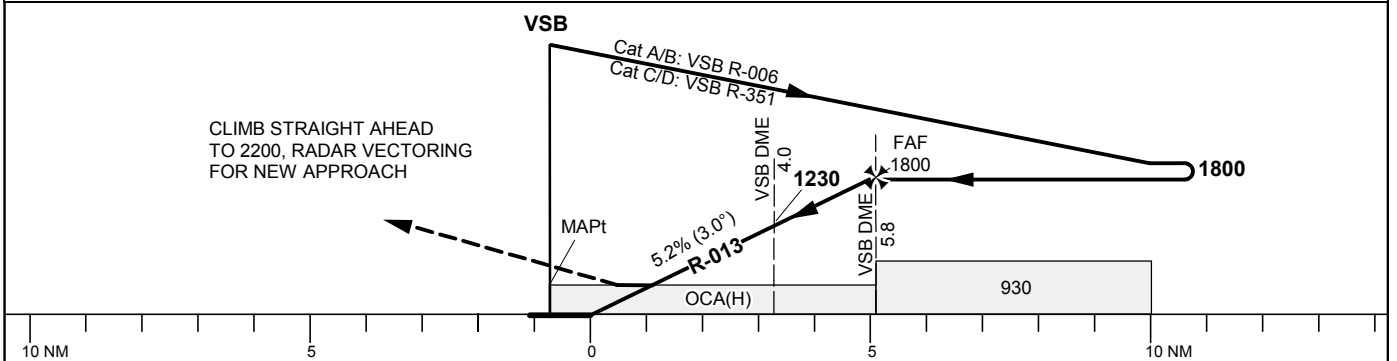
**THR ELEV 137.0 ft, AD ELEV 164 ft**  
 OCH are related to THR.  
 Circling OCH are related to AD ELEV.  
 BRG are MAG  
 ALT, HGT and ELEV in ft.

VISBY TOWER	120.305
VISBY APPROACH	126.155

**VOR RWY 21**



TA 5000 ft AMSL Final APCH line offset 2° \*Timing not authorized for defining the MAPt



Cat of ACFT	OCA (H)				Final approach		Distance FAF-MAPt 5.8 NM*					
	A	B	C	D	DME VSB NM	5	4	3	2	1	0	
Straight-in Approach	500(360)				ALT	1550	1232	913	595			
					GS	kt	80	100	120	140	160	180
Circling	630(460)	780(610)	1510(1340)	1510(1340)	Time	min:s	04:20	03:28	02:54	02:29	02:10	01:56
Circling W RWY	630(460)	630(460)	740(570)	1010(840)	Rate of descent	ft/min	425	530	635	745	850	955