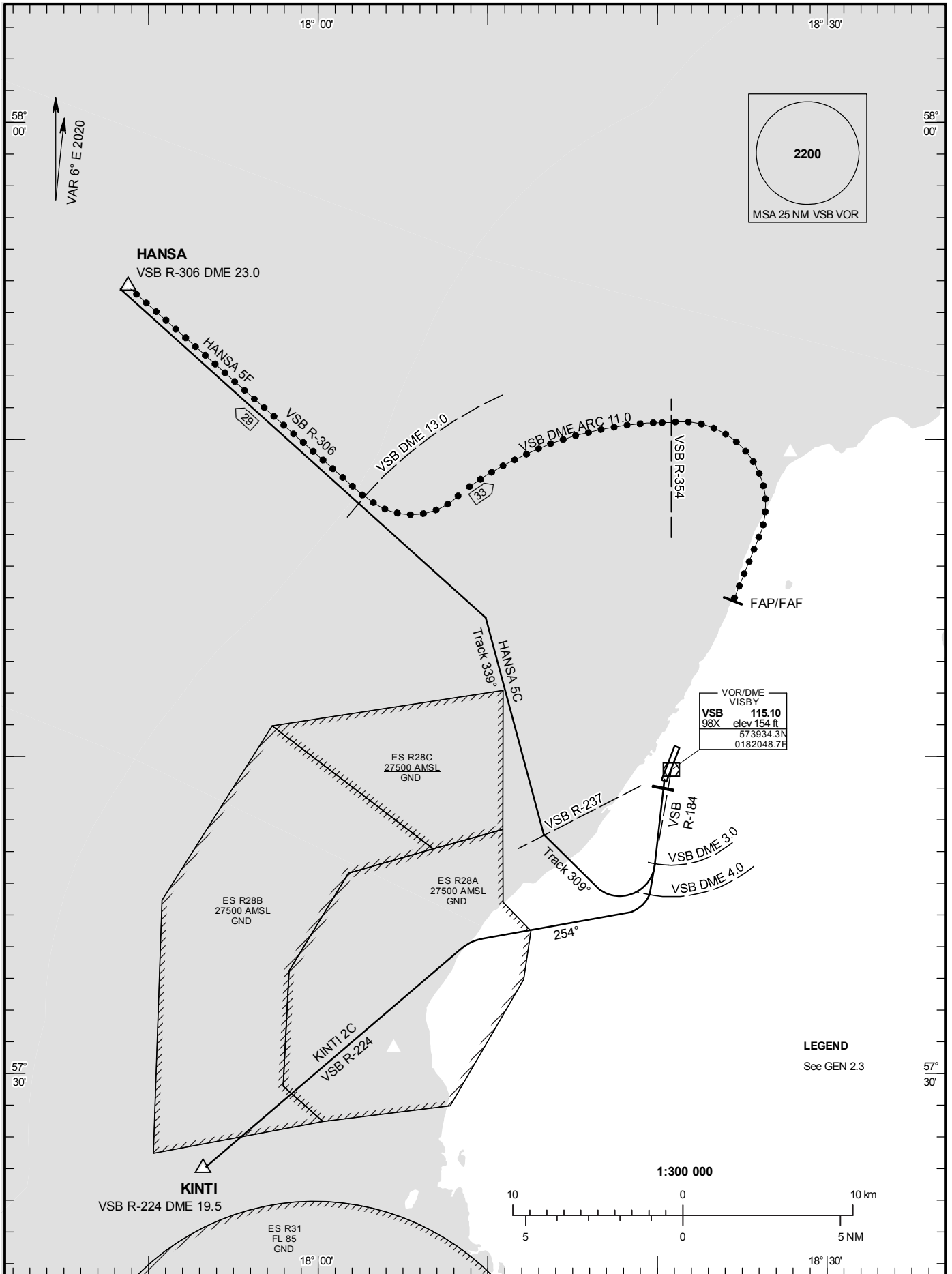


STANDARD INSTRUMENT
DEPARTURE AND ARRIVAL
CHART (SID/STAR) - ICAO

HGT and ALT in ft
BRG are MAG
TA 5000 ft AMSL

VISBY TOWER	120.305
VISBY APPROACH	126.155

RWY 21



DEPARTURE (SID) RWY 21

HANSA FIVE CHARLIE DEPARTURE (HANSA 5C)

Intercept VSB R-184 (MNM PDG 3.4 % (206 ft/NM) until VSB DME 3.0). At VSB DME 3.0 turn right to track 309° and proceed to VSB R-237. Turn right to track 339° to intercept VSB R-306 and proceed to HANSA.

KINTI TWO CHARLIE DEPARTURE (KINTI 2C)

Intercept VSB R-184. At VSB DME 4.0 turn right to track 254°. Intercept VSB R-224 and proceed to KINTI.

Note. After initial turn, all maneuvering outside VSB DME 3, due to noise disturbance.

Note. KINTI 2C: MNM average climb gradient is 8.1% (492 ft/NM) in order to stay inside controlled airspace.

ARRIVAL (STAR) RWY 21

REMARK

Descent to a minimum altitude for an arrival route must not be initiated until an ATC clearance to this altitude or an approach clearance has been received.

HANSA FIVE FOXTROT ARRIVAL (HANSA 5F)

At HANSA intercept VSB R-306 and proceed to VSB DME 13.0. Turn left and intercept VSB DME ARC 11.0. At VSB R-354, turn right to intercept LOC SV, not below 1800 ft until FAP/FAF.