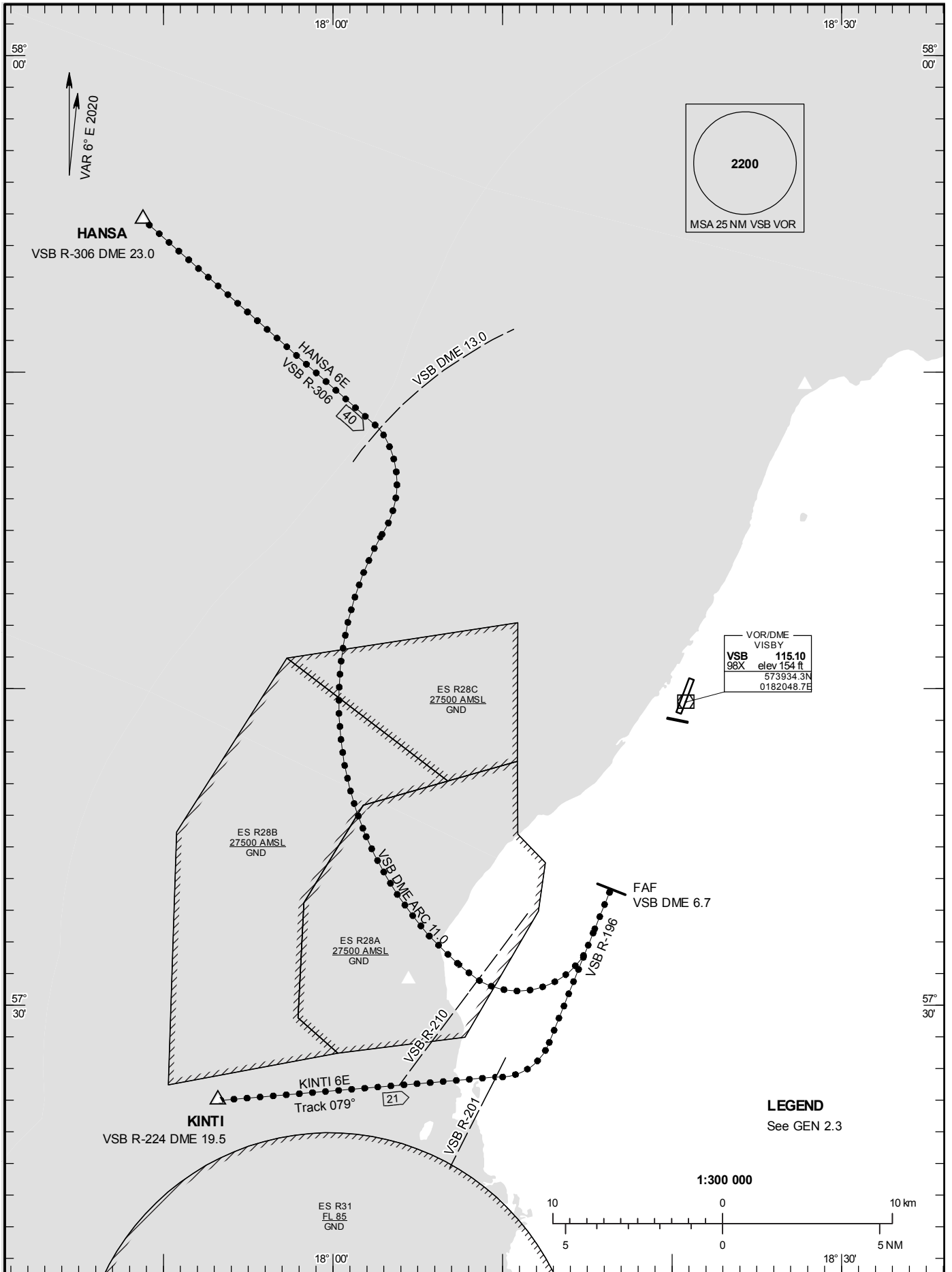


STANDARD INSTRUMENT
ARRIVAL CHART (STAR) -
ICAO

HGT and ALT in ft
BRG are MAG
TA 5000 ft AMSL

VISBY TOWER	120.305
VISBY APPROACH	126.155

RWY 03



ARRIVAL (STAR) RWY 03

REMARK

Descent to a minimum altitude for an arrival route must not be initiated until an ATC clearance to this altitude or an approach clearance has been received.

HANSA SIX ECHO ARRIVAL (HANSA 6E)

At HANSA intercept VSB R-306 and proceed to VSB DME 13.0. Turn right and proceed on VSB DME ARC 11.0. At VSB R-210 turn left to intercept VSB R-196, not below 2200 ft until FAF.

KINTI SIX ECHO ARRIVAL (KINTI 6E)

At KINTI proceed on track 079° to VSB R-201. Turn left to intercept VSB R-196, not below 2200 ft until FAF.