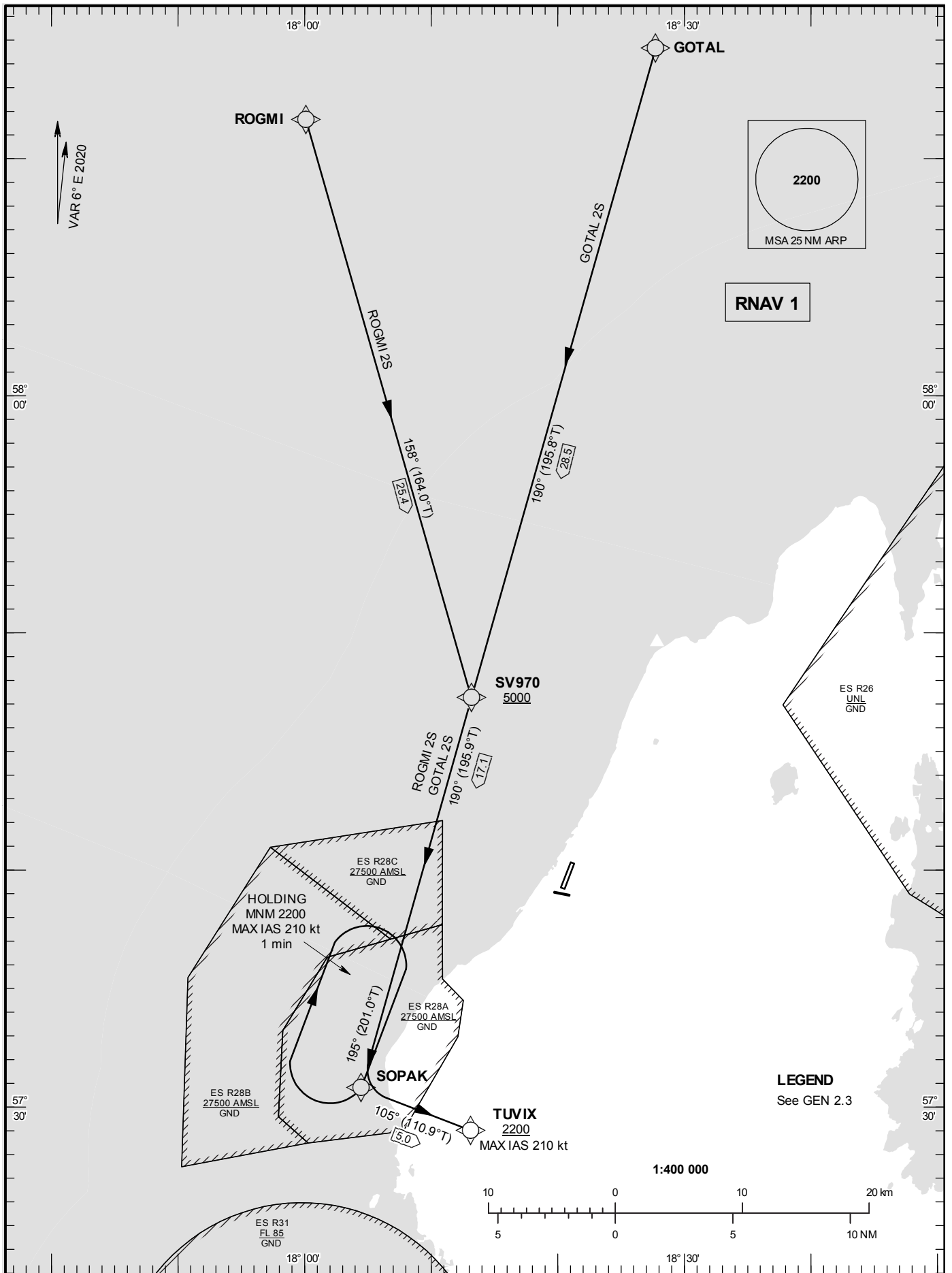


STANDARD INSTRUMENT
ARRIVAL CHART (STAR) -
ICAO

HGT and ALT in ft
BRG are MAG (True)
TA 5000 ft AMSL

VISBY TOWER	120.305
VISBY APPROACH	126.155

RNAV (GNSS) STAR RWY 03



Prescribed Coding of RNAV (GNSS) STAR for RWY 03

REMARK

Specified minimum level/ALT at WPT must be adhered to unless specifically cancelled by ATC.

GOTAL 2S

Path Term	Waypoint Identifier	Fly-over	Course °M(°T)	Dist (NM)	Turn Dir	Rest Alts (ft AMSL)	Speed Limits (kt)	VPA/RDH (°/ft)	Rec Navaid	Navigation Specification
IF	GOTAL	-	-	-	-	+FL100	-	-	-	RNAV 1
TF	SV970	-	190°(195.8°)	28.5	-	+5000	-	-	-	RNAV 1
TF	SOPAK	-	190°(195.9°)	17.1	-	-	-	-	-	RNAV 1
TF	TUVIX	-	105°(110.9°)	5.0	-	+2200	-210	-	-	RNAV 1

STAR instruction: GOTAL (FL100 or above) – SV970 (5000 ft or above) – SOPAK – TUVIX
(2200 ft or above, max IAS 210 kt)**ROGMI 2S**

Path Term	Waypoint Identifier	Fly-over	Course °M(°T)	Dist (NM)	Turn Dir	Rest Alts (ft AMSL)	Speed Limits (kt)	VPA/RDH (°/ft)	Rec Navaid	Navigation Specification
IF	ROGMI	-	-	-	-	+FL100	-	-	-	RNAV 1
TF	SV970	-	158°(164.0°)	25.4	-	+5000	-	-	-	RNAV 1
TF	SOPAK	-	190°(195.9°)	17.1	-	-	-	-	-	RNAV 1
TF	TUVIX	-	105°(110.9°)	5.0	-	+2200	-210	-	-	RNAV 1

STAR instruction: ROGMI (FL100 or above) – SV970 (5000 ft or above) – SOPAK – TUVIX
(2200 ft or above, max IAS 210 kt)