

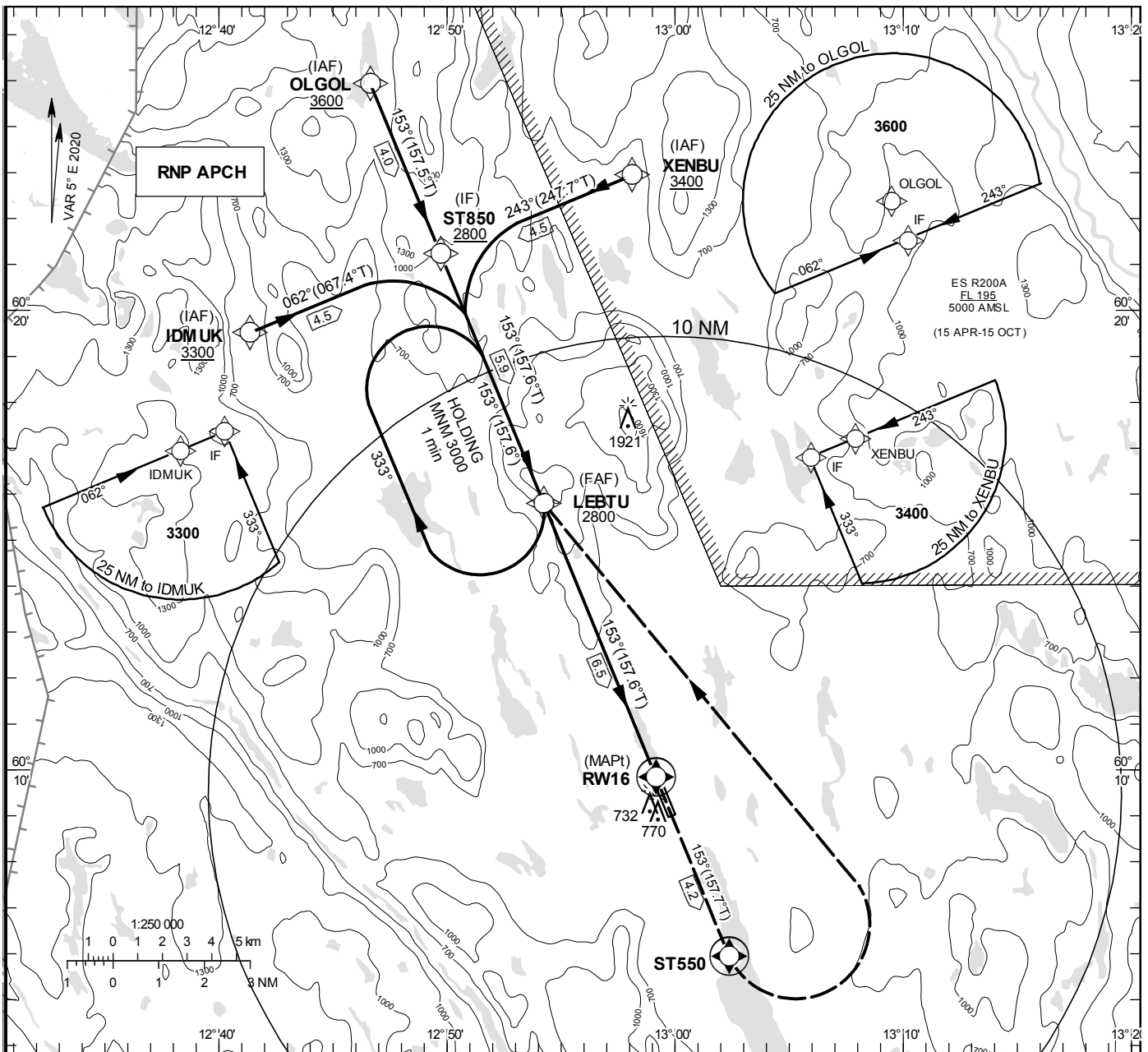
INSTRUMENT APPROACH CHART – ICAO

THR ELEV 350 ft, AD ELEV 394 ft
 OCH are related to THR.
 BRG are MAG (True).
 ALT, HGT and ELEV in ft.

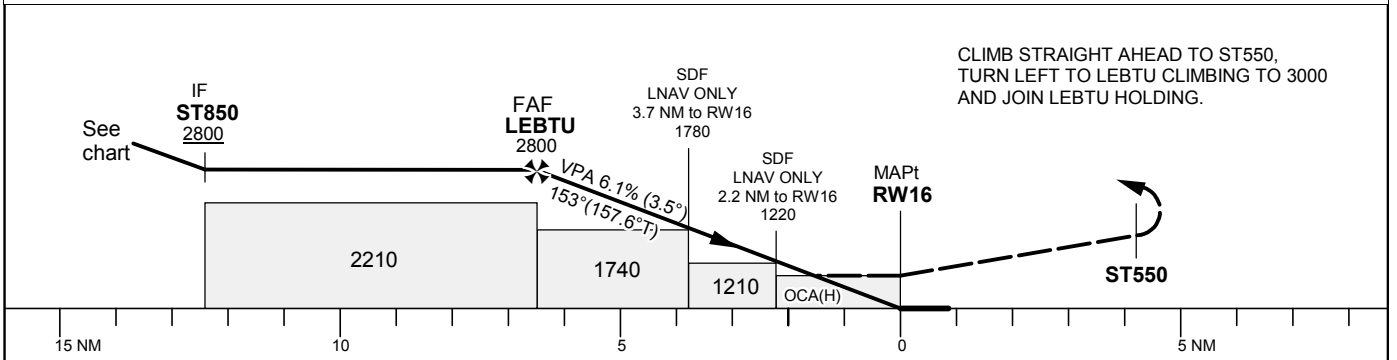
TORSBY INFORMATION 122.055

RNP RWY 16

EGNOS Ch 59910 E 16A



TA 5000 ft AMSL RDH 50 ft



CLIMB STRAIGHT AHEAD TO ST550,
 TURN LEFT TO LEBTU CLIMBING TO 3000
 AND JOIN LEBTU HOLDING.

Cat of ACFT	OCA (H)		Final approach					
	A	B	Dist to RW 16	6	5	4	3	2
LPV	883 (533)	897 (547)	ALT	2630	2260	1890	1510	1140
LNAV	960 (610)		GS	kt	80	100	120	140
			Rate of descent	ft/min	495	620	745	865

RNP RWY 16 via XENBU

Path Desc	Waypoint Identifier	Fly-over	Course °M(°T)	Dist (NM)	Turn Dir	Altitude	Speed	VPA/RDH	Rec Navaid	Navigation Specification
IF	XENBU	-	-	-	-	+3400	-	-	-	RNP APCH
TF	ST850	-	243°(247.7°)	4.5	-	+2800	-	-	-	RNP APCH

RNP RWY 16 via OLGOL

Path Desc	Waypoint Identifier	Fly-over	Course °M(°T)	Dist (NM)	Turn Dir	Altitude	Speed	VPA/RDH	Rec Navaid	Navigation Specification
IF	OLGOL	-	-	-	-	+3600	-	-	-	RNP APCH
TF	ST850	-	153°(157.5°)	4.0	-	+2800	-	-	-	RNP APCH

RNP RWY 16 via IDMUK

Path Desc	Waypoint Identifier	Fly-over	Course °M(°T)	Dist (NM)	Turn Dir	Altitude	Speed	VPA/RDH	Rec Navaid	Navigation Specification
IF	IDMUK	-	-	-	-	+3300	-	-	-	RNP APCH
TF	ST850	-	062°(067.4°)	4.5	-	+2800	-	-	-	RNP APCH

Path Desc	Waypoint Identifier	Fly-over	Course °M(°T)	Dist (NM)	Turn Dir	Altitude	Speed	VPA/RDH	Rec Navaid	Navigation Specification
IF	ST850	-	-	-	-	+2800	-	-	-	RNP APCH
TF	LEBTU	-	153°(157.6°)	5.9	-	@2800	-	-	-	RNP APCH
TF	RW16	Y	153°(157.6°)	6.5	-	@400	-	-3.5/50	-	RNP APCH
TF	ST550	Y	153°(157.7°)	4.2	-	-	-	-	-	RNP APCH
DF	LEBTU	Y	-	-	L	+3000	-	-	-	RNP APCH

ESST Holding LEBTU

Path Desc	Waypoint Identifier	Fly-over	Course °M(°T)	Dist (NM)	Turn Dir	Altitude	Speed	VPA/RDH	Rec Navaid	Navigation Specification
HM	LEBTU	Y	153°(157.6°)	-	R	+3000	-	-	-	RNP 1

FAS Data Block

RNP RWY 16

Input data

Operation Type	0
SBAS Provider	1
Airport Identifier	ESST
Runway	16
Runway Direction	0
Approach Performance Designator	0
Route Indicator	
Reference Path Data Selector	0
Reference Path Identifier	E16A
LTP/FTP Latitude	600950.3100N
LTP/FTP Longitude	0125909.7500E
LTP/FTP Ellipsoidal Height (metres)	139.3
FPAP Latitude	600902.7700N
Delta FPAP Latitude (seconds)	-47.5400
FPAP Longitude	0125948.8500E
Delta FPAP Longitude (seconds)	39.1000
Threshold Crossing Height	50.0
TCH Units Selector	0
Glidepath Angle (degrees)	3.50
Course Width (metres)	105.00
Length Offset (metres)	0
HAL (metres)	40.0
VAL (metres)	50.0

Output data

Data Block	10 14 13 13 05 10 00 00 01 36 31 05 CC CF D1 19 6C B0 92 05 71 19 98 8C FE 78 31 01 F4 01 5E 01 64 00 C8 FA 88 D5 50 5F
Calculated CRC Value	88D5505F

Required Additional Data

ICAO Code	ES
LTP/FTP Orthometric Height (metres)	106.7
FPAP Orthometric Height (metres)	120.1