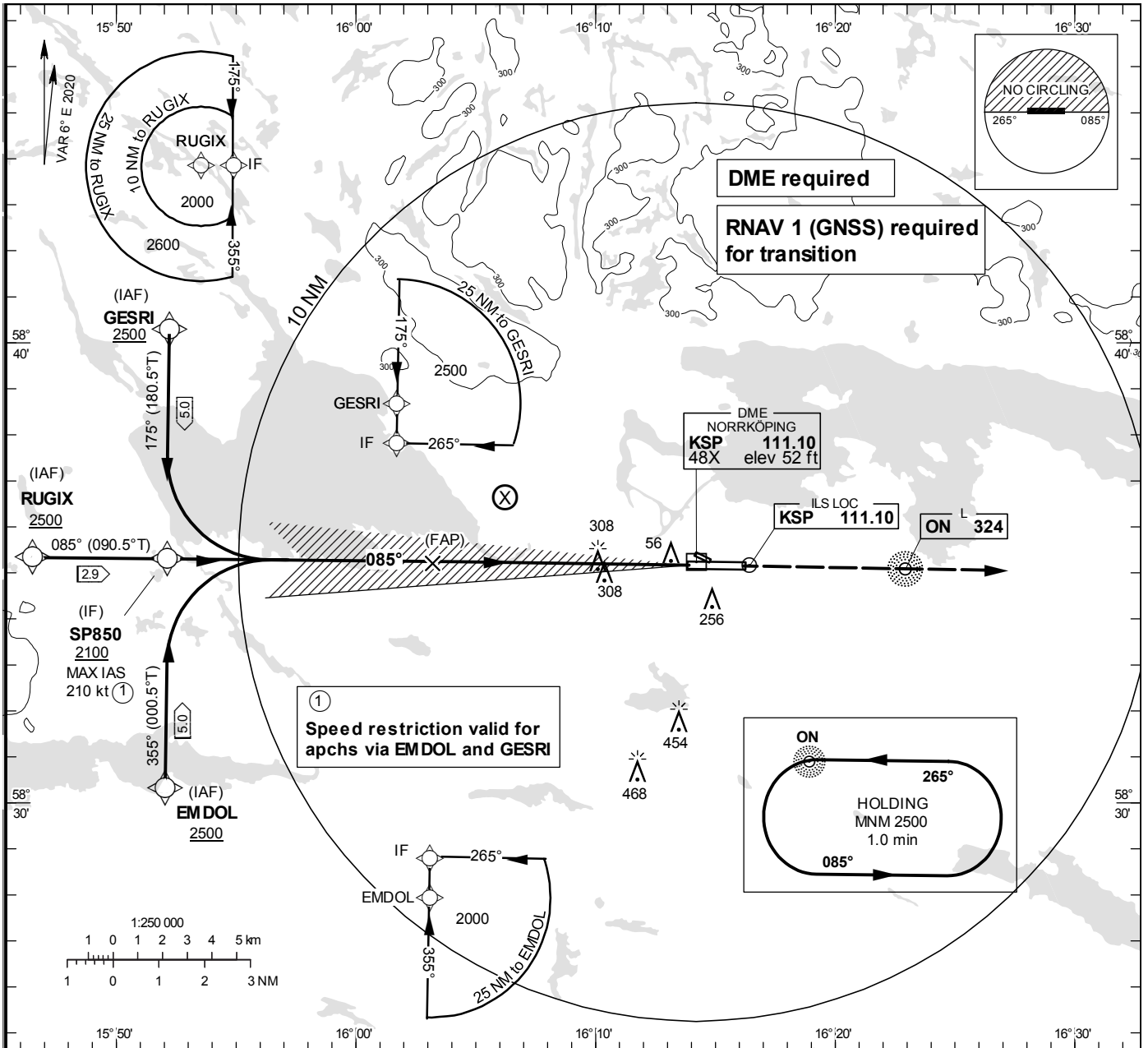


**INSTRUMENT APPROACH CHART – ICAO**

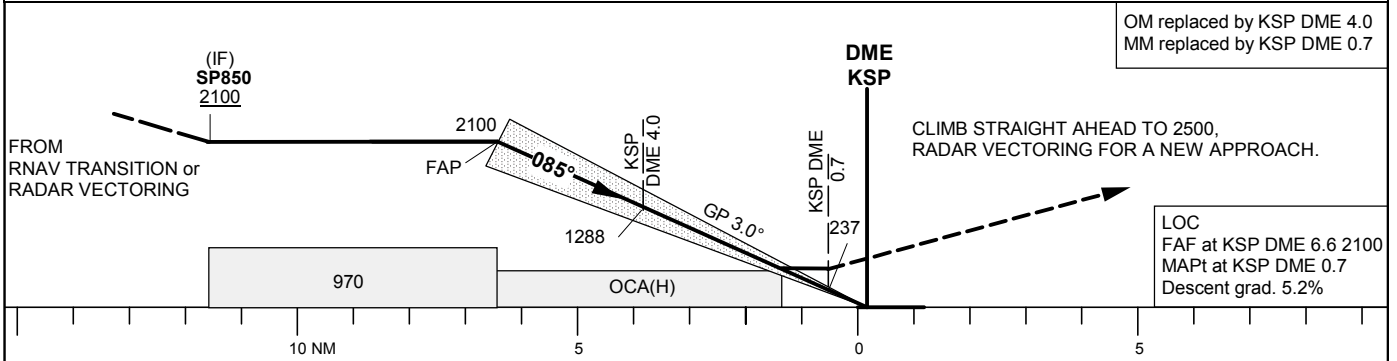
**THR ELEV 13.3 ft, AD ELEV 32 ft**  
 OCH are related to THR.  
 Circling OCH are related to AD ELEV.  
 BRG are MAG  
 ALT. HGT and ELEV in ft.

KUNGSÄNGEN TOWER 120.355  
 ÖSTGÖTA APPROACH 132.955

**ILS or LOC RWY 09**



TA 5000 ft AMSL RDH 50.9 ft \*Timing not authorized for defining the MAPt



		OCA (H)				Final approach		LOC Distance FAF-MAPt 5.9 NM*					
		A	B	C	D	DME KSP NM	6	5	4	3	2		
Cat of ACFT	CAT I	170 (157)	177 (164)	185 (172)	195 (182)	ALT	1930	1610	1290	970	650		
	LOC	570 (550)				GS	kt	80	100	120	140	160	180
Straight-in Approach	LOC	570 (550)				Time	min:s	4:24	3:31	2:56	2:31	2:12	1:57
Circling S RWY		570 (530)	620 (580)	860 (820)	880 (840)	Rate of descent	ft/min	425	530	635	745	850	955