

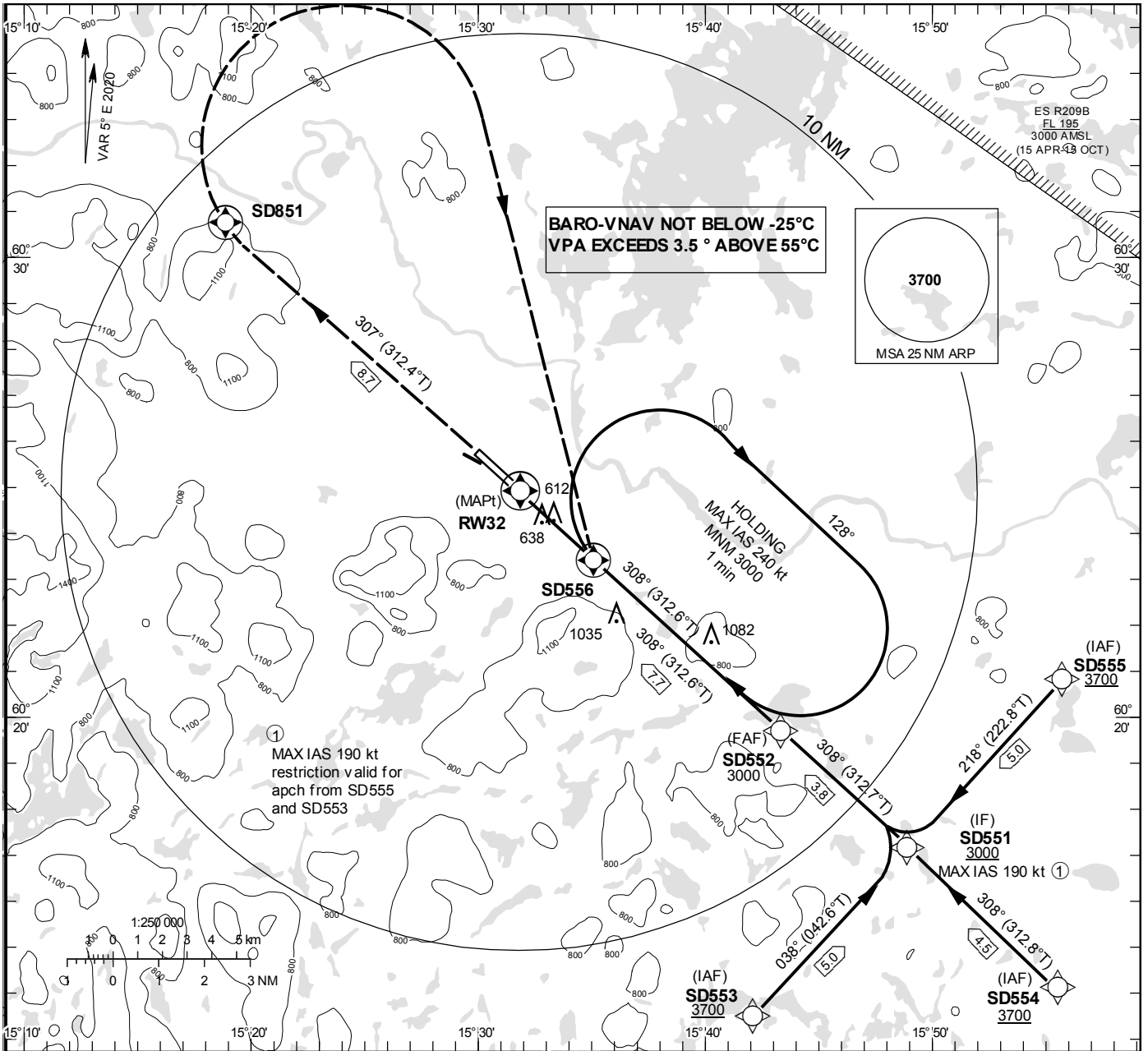
**INSTRUMENT
APPROACH
CHART – ICAO**

THR ELEV 493.0 ft, AD ELEV 504 ft
 OCH are related to THR.
 BRG are MAG (True).
 ALT, HGT and ELEV in ft.

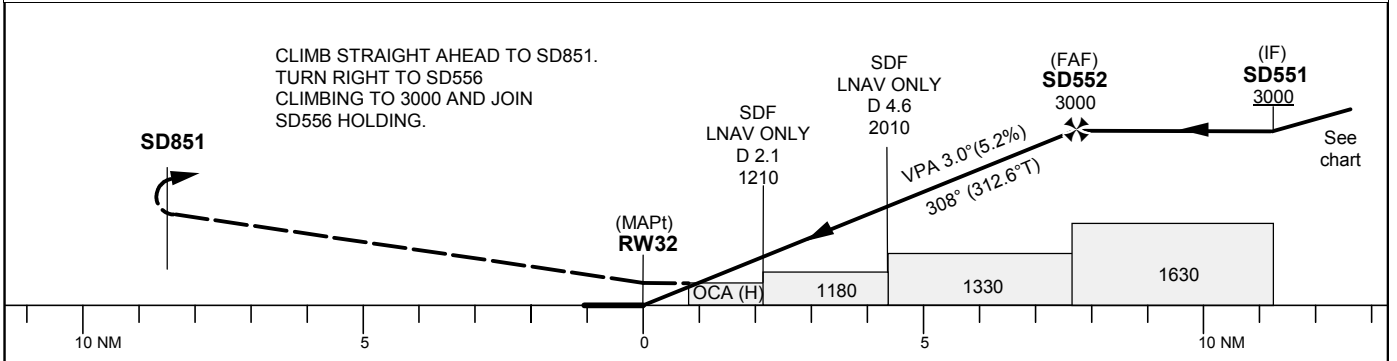
BORLÄNGE TOWER 127.305

RNP RWY 32

EGNOS CH 50055 E 32A



TA 5000 ft AMSL RDH 50 ft



Cat of ACFT	OCA (H)				Final approach Dist to RW32	Distance FAF-MAPT 7.7 NM						
	A	B	C	D		7	6	5	4	3	2	
LPV	742(249)	754(261)	762(269)	773(280)	ALT	2770	2450	2130	1820	1500	1180	
LNAV/VNAV	770(280)	790(300)	790(300)	800(310)	GS	kt	80	100	120	140	160	180
LNAV	890(400)				Rate of descent	ft/min	425	530	635	745	850	955

RNP RWY 32 via SD555

Path Desc	Waypoint Identifier	Fly-over	Course °M(°T)	Dist (NM)	Turn Dir	Altitude	Speed	VPA/RDH	Rec Navaid	Navigation Specification
IF	SD555	-	-	-	-	+3700	-	-	-	RNP APCH
TF	SD551	-	218°(222.8°)	5.0	-	+3000	-190	-	-	RNP APCH

RNP RWY 32 via SD554

Path Desc	Waypoint Identifier	Fly-over	Course °M(°T)	Dist (NM)	Turn Dir	Altitude	Speed	VPA/RDH	Rec Navaid	Navigation Specification
IF	SD554	-	-	-	-	+3700	-	-	-	RNP APCH
TF	SD551	-	308°(312.8°)	4.5	-	+3000	-	-	-	RNP APCH

RNP RWY 32 via SD553

Path Desc	Waypoint Identifier	Fly-over	Course °M(°T)	Dist (NM)	Turn Dir	Altitude	Speed	VPA/RDH	Rec Navaid	Navigation Specification
IF	SD553	-	-	-	-	+3700	-	-	-	RNP APCH
TF	SD551	-	038°(042.6°)	5.0	-	+3000	-190	-	-	RNP APCH

Path Desc	Waypoint Identifier	Fly-over	Course °M(°T)	Dist (NM)	Turn Dir	Altitude	Speed	VPA/RDH	Rec Navaid	Navigation Specification
IF	SD551	-	-	-	-	+3000	-	-	-	RNP APCH
TF	SD552	-	308°(312.7°)	3.8	-	@3000	-	-	-	RNP APCH
TF	RW32	Y	308°(312.6°)	7.7	-	-	-	-3.0/50	-	RNP APCH
TF	SD851	Y	307°(312.4°)	8.7	-	-	-	-	-	RNP APCH
DF	SD556	Y	-	-	R	+3000	-	-	-	RNP APCH

Path Desc	Waypoint Identifier	Fly-over	Course °M(°T)	Dist (NM)	Turn Dir	Altitude	Speed	VPA/RDH	Rec Navaid	Navigation Specification
HM	SD556	Y	308°(312.6°)	-	R	+3000	-240	-	-	RNAV 1

FAS Data Block

RNP RWY 32

Input data

Operation Type	0
SBAS Provider	1
Airport Identifier	ESSD
Runway	32
Runway Direction	0
Approach Performance Designator	0
Route Indicator	
Reference Path Data Selector	0
Reference Path Identifier	E32A
LTP/FTP Latitude	602454.3200N
LTP/FTP Longitude	0153151.0900E
LTP/FTP Ellipsoidal Height (metres)	179.1
FPAP Latitude	602546.1220N
Delta FPAP Latitude (seconds)	51.8020
FPAP Longitude	0152956.4275E
Delta FPAP Longitude (seconds)	-114.6625
Threshold Crossing Height	50.0
TCH Units Selector	0
Glidepath Angle (degrees)	3.00
Course Width (metres)	105.00
Length Offset (metres)	64
HAL (metres)	40.0
VAL (metres)	50.0

Output data

Data Block	10 04 13 13 05 20 00 00 01 32 33 05 60 66 ED 19 64 45 AA 06 FF 1A B4 94 01 33 80 FC F4 01 2C 01 64 08 C8 FA 70 11 72 21
Calculated CRC Value	70117221

Required Additional Data

ICAO Code	ES
LTP/FTP Orthometric Height (metres)	150.3
FPAP Orthometric Height (metres)	153.6