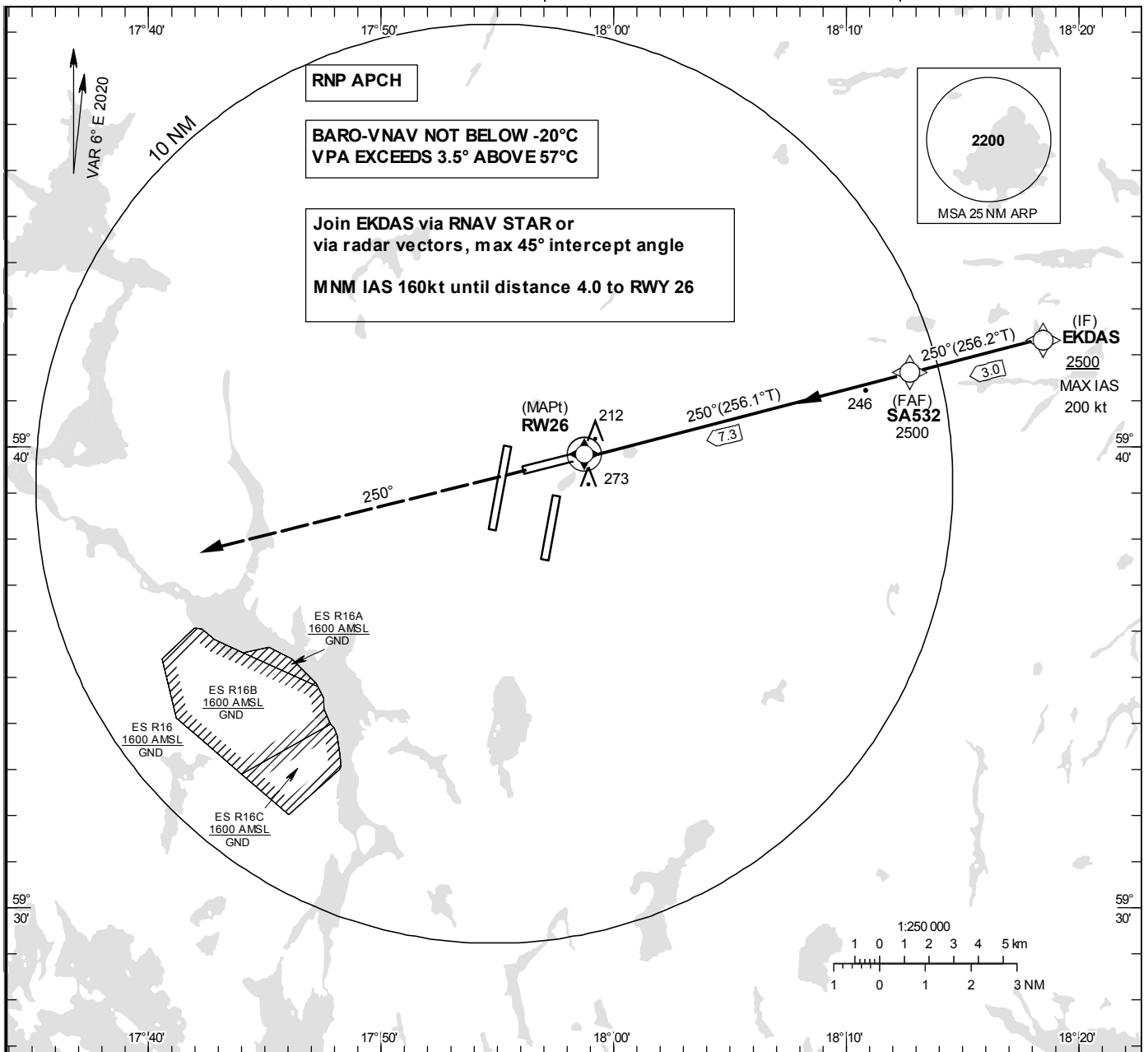


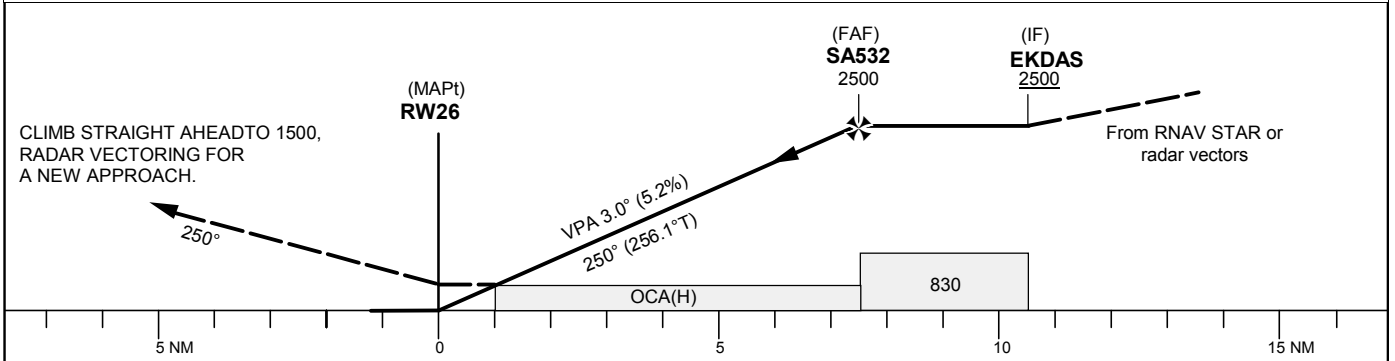
INSTRUMENT APPROACH CHART – ICAO
THR ELEV 124.8 ft, AD ELEV 138 ft
 OCH are related to THR.
 BRG are MAG (True).
 ALT, HGT and ELEV in ft.

ARLANDA TOWER 128.730/
118.505/125.130
ARLANDA ATIS ARR 119.005
STOCKHOLM APPROACH 123.755

RNP z RWY 26



TA 5000 ft AMSL RDH 50.0 ft Special Com Failure Procedures see ESSA AD 2.22



Cat of ACFT	OCA (H)				Final approach							
	A	B	C	D	Dist to RW26	7	6	5	4	3	2	
LNAV/VNAV	380(256)	390(266)	397(273)	405(281)	ALT	2400	2080	1770	1450	1130	810	
LNAV	500(370)				GS	kt	80	100	120	140	160	180
					Rate of descent	ft/min	425	530	635	745	850	955

RNP z RWY 26 via EKDAS

Path Term	Waypoint Identifier	Fly-over	Course °M(°T)	Dist (NM)	Turn Dir	Rest Alts (ft AMSL)	Speed Limits (kt)	VPA/ RDH (°/ft)	Rec Navaid	Navigation Specification
IF	EKDAS	-	-	-	-	+2500	-200	-	-	RNP APCH
TF	SA532	-	250° (256.2°)	3.0	-	@2500	-	-	-	RNP APCH
TF	RW26	Y	250° (256.1°)	7.3	-	@175	-	-3.0/50	-	RNP APCH
CA	-	-	250° (256.1°)	-	-	@1500	-	-	ARL	RNP APCH
VM	-	-	250°	-	-	-	-	-	-	RNP APCH