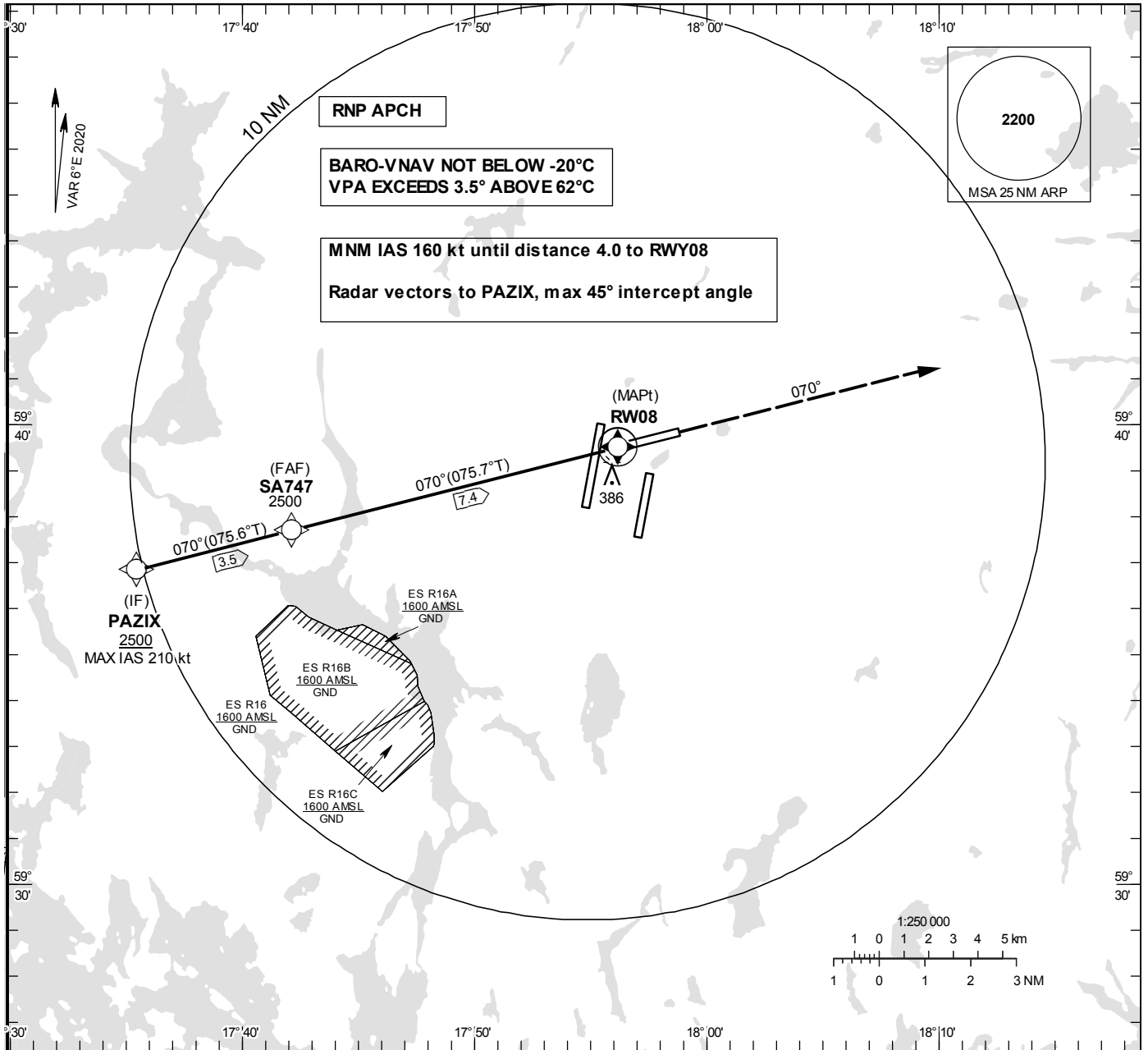


**INSTRUMENT APPROACH CHART – ICAO**

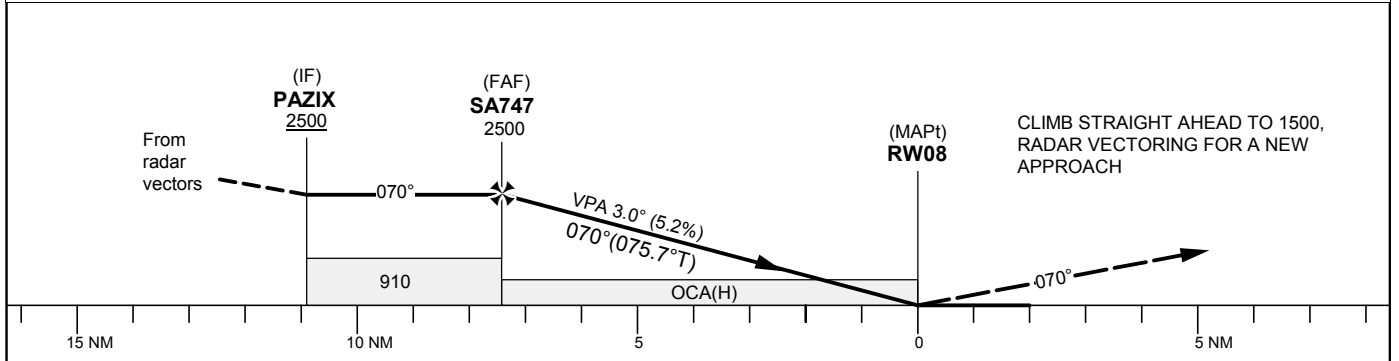
**THR ELEV 108 ft, AD ELEV 138 ft**  
 OCH are related to THR.  
 BRG are MAG (True).  
 ALT, HGT and ELEV in ft.

**ARLANDA TOWER** 128.730/  
118.505/125.130  
**ARLANDA ATIS ARR** 119.005  
**STOCKHOLM APPROACH** 123.755

**RNP RWY 08**



TA 5000 ft AMSL RDH 50.0 ft Special COM Failure Procedures see ESSA AD 2.22



Cat of ACFT	OCA (H)				Final approach		Distance FAF-MAPt 7.4 NM						
	A	B	C	D	Dist to RW08 (NM)	Alt	7	6	5	4	3	2	
LNAV/VNAV	501(393)	511(403)	532(424)	546(438)		2387	2069	1750	1432	1113	795		
LNAV	630(520)	630(520)	630(520)	630(520)		GS	80	100	120	140	160	180	
						Rate of descent	ft/min	425	530	635	745	850	955

RNP RWY 08 via PAZIX

Path Desc	Waypoint Identifier	Fly-over	Course °M(°T)	Dist (NM)	Turn Dir	Altitude	Speed	VPA/RDH	Rec Navaid	Navigation Specification
IF	PAZIX	-	-	-	-	+2500	-210	-	-	RNP APCH
TF	SA747	-	070°(075.6°)	3.5	-	@2500	-	-	-	RNP APCH
TF	RW08	Y	070°(075.7°)	7.4	-	@158	-	-3.00	-	RNP APCH
CA	-	-	070°(075.7°)	-	-	@1500	-	-	ARL	RNP APCH
VM	-	-	070°	-	-	-	-	-	-	RNP APCH