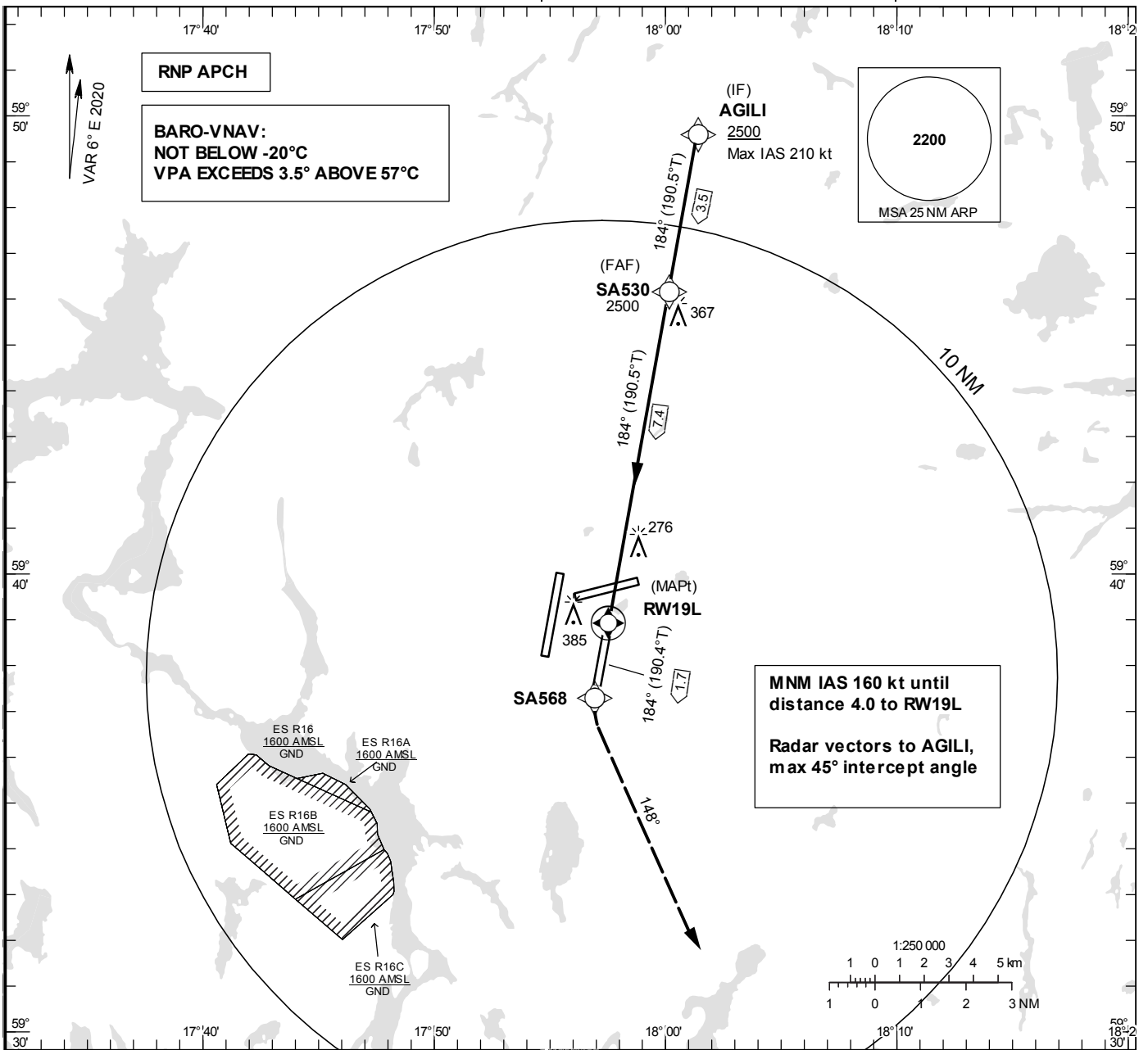


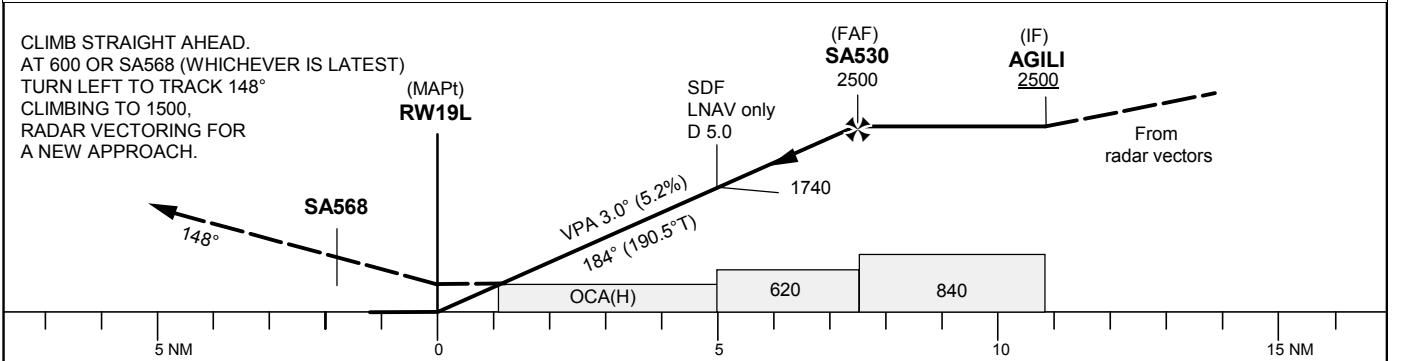
INSTRUMENT APPROACH CHART – ICAO
THR ELEV 98.9 ft, AD ELEV 138 ft
 OCH are related to THR.
 BRG are MAG (True).
 ALT, HGT and ELEV in ft.

ARLANDA TOWER 128.730/
118.505/125.130
ARLANDA ATIS ARR 119.005
STOCKHOLM APPROACH 123.755

RNP RWY 19L



TA 5000 ft AMSL RDH 50.0 ft Special Com Failure Procedures see ESSA AD 2.22



OCA (H)				Final approach	Distance FAF-MAPt 7.4 NM							
Cat of ACFT	A	B	C	D	Dist to RW19L	7	6	5	4	3	2	
LNAV/VNAV	454 (356)	460 (362)	465 (367)	470 (372)	ALT	2380	2060	1740	1420	1100	790	
LNAV	530 (430)				GS	kt	80	100	120	140	160	180
					Rate of descent	ft/min	425	530	635	745	850	955

RNP RWY 19L via AGILI

Path Term	Waypoint Identifier	Fly-over	Course °M(°T)	Dist (NM)	Turn Dir	Rest Alts (ft AMSL)	Speed Limits (kt)	VPA/ RDH (°/ft)	Rec Navaid	Navigation Specification
IF	AGILI	-	-	-	-	+2500	-210	-	-	RNP APCH
TF	SA530	-	184° (190.5°)	3.5	-	@2500	-	-	-	RNP APCH
TF	RW19L	Y	184° (190.5°)	7.4	-	@149	-	-3.0/50	-	RNP APCH
DF	SA568	Y	184° (190.5°)	1.7	-	-	-	-	-	RNP APCH
CA	-	-	184° (190.5°)	-	-	+600	-	-	ARL	RNP APCH
VM	-	-	148°	-	L	@1500	-	-	-	RNP APCH