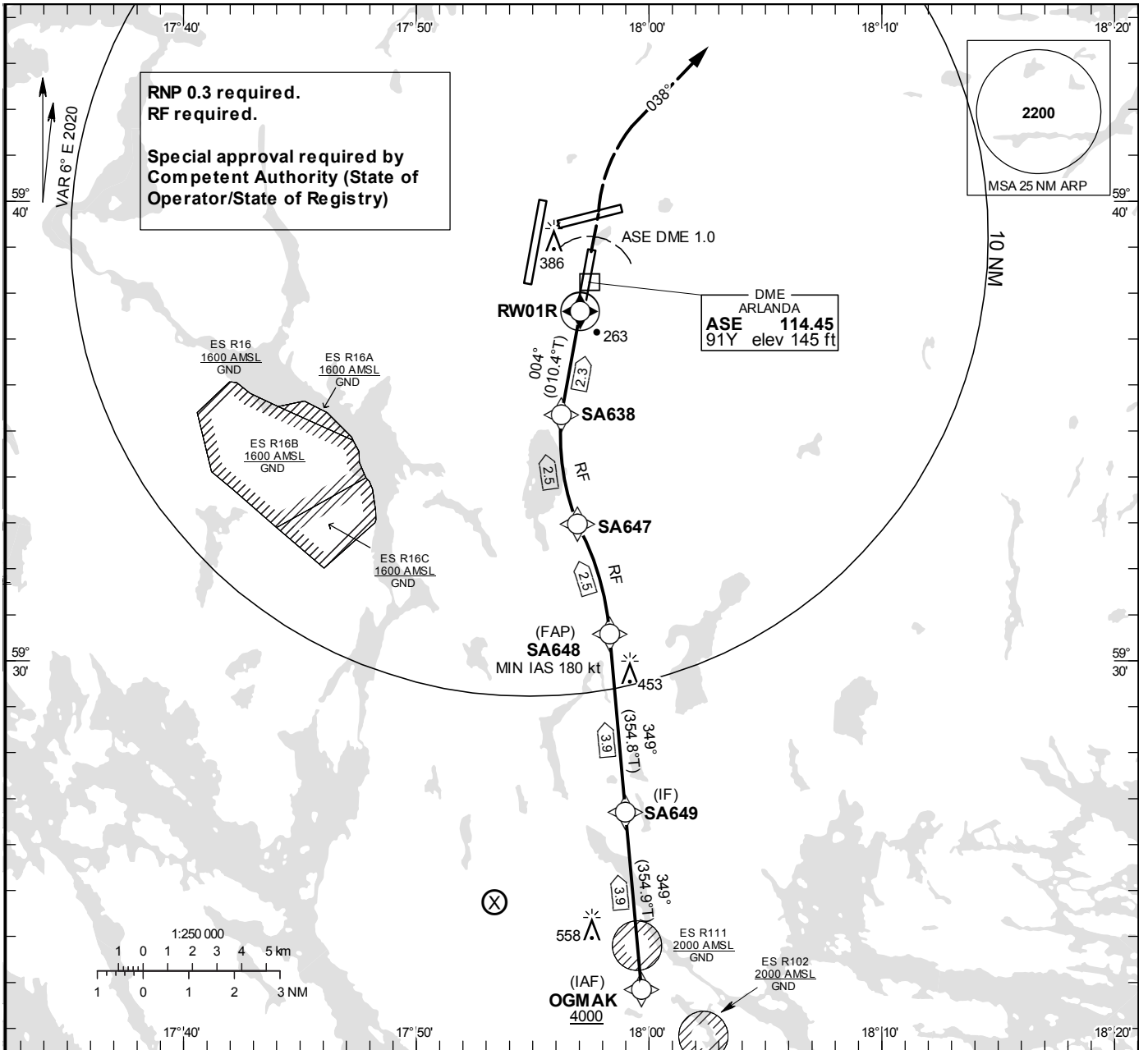


**INSTRUMENT APPROACH CHART – ICAO**

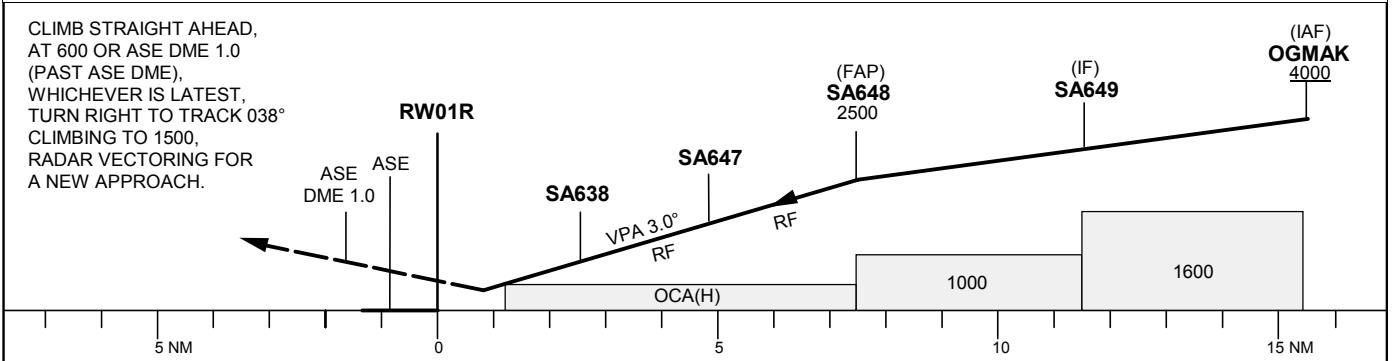
**THR ELEV 138.0 ft, AD ELEV 138 ft**  
 OCH are related to THR.  
 BRG are MAG (True).  
 ALT, HGT and ELEV in ft.  
**NA BELOW -30° C**

**ARLANDA TOWER** 128.730/  
118.505/125.130  
**ARLANDA ATIS ARR** 119.005  
**STOCKHOLM APPROACH** 123.755

**RNP y RWY 01R (AR)**



TA 5000 ft AMSL RDH 50.9 ft Special Com Failure Procedures see ESSA AD 2.22



| OCA (H)     |           |           |           |           |
|-------------|-----------|-----------|-----------|-----------|
| Cat of ACFT | A         | B         | C         | D         |
| RNP (0.3)   | 489 (351) | 497 (359) | 509 (371) | 520 (382) |

Prescribed Coding/Description RNP y RWY 01R (AR)

| Path Desc | Waypoint Identifier | Fly-over | Course °M(°T) | Dist (NM) | Turn Dir | Altitude | Speed | VPA/RDH | ARC Radius (NM) | ARC Center | Nav Spec |
|-----------|---------------------|----------|---------------|-----------|----------|----------|-------|---------|-----------------|------------|----------|
| IF        | OGMAK               | -        | -             | -         | -        | +4000    | -     | -       | -               | -          | RNP 1.0  |
| TF        | SA649               | -        | 349°(354.9°)  | 3.9       | -        | -        | -     | -       | -               | -          | RNP 1.0  |
| TF        | SA648               | -        | 349°(354.8°)  | 3.9       | -        | 2500     | +180  | -       | -               | -          | RNP 1.0  |
| RF        | SA647               | -        | -             | 2.5       | L        | -        | -     | -3.0    | 6.5172          | SA746      | RNP 0.3  |
| RF        | SA638               | -        | -             | 2.5       | R        | -        | -     | -3.0    | 3.7094          | SA646      | RNP 0.3  |
| TF        | RW01R               | -        | 004° (010.4°) | 2.3       | -        | 188      | -     | -3.0    | -               | -          | RNP 0.3  |