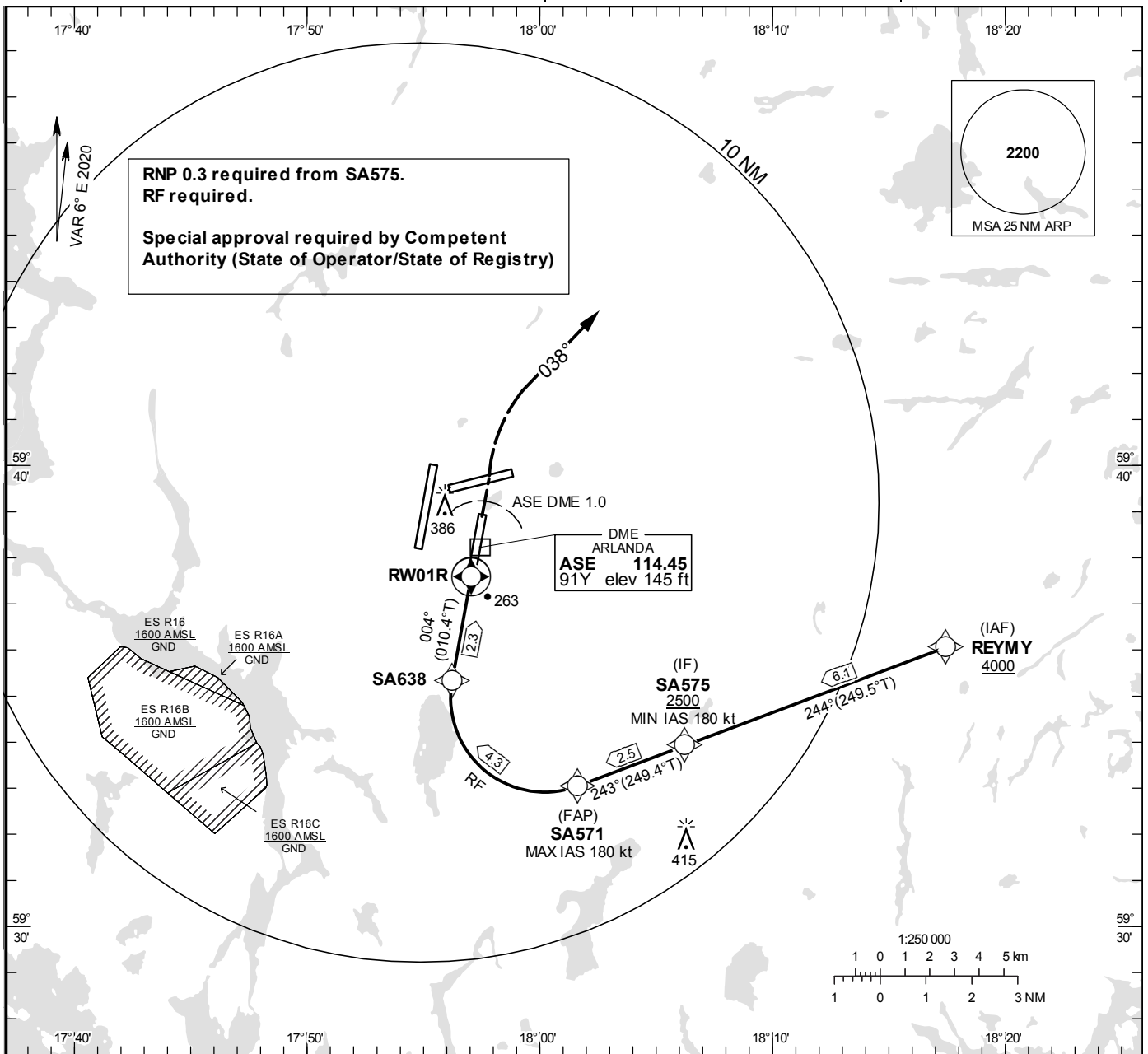


**INSTRUMENT APPROACH CHART – ICAO**

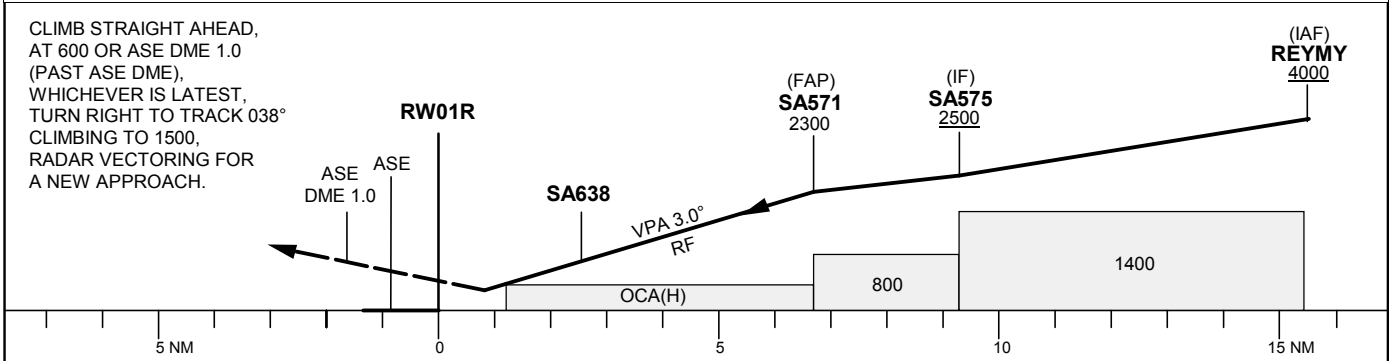
**THR ELEV 138.0 ft, AD ELEV 138 ft**  
 OCH are related to THR.  
 BRG are MAG (True).  
 ALT, HGT and ELEV in ft.  
**NA BELOW -30° C**

**ARLANDA TOWER** 128.730/  
 118.505/125.130  
**ARLANDA ATIS ARR** 119.005  
**STOCKHOLM APPROACH** 123.755

**RNP z RWY 01R (AR)**



TA 5000 ft AMSL RDH 50.9 ft Special Com Failure Procedures see ESSA AD 2.22



OCA (H)				
Cat of ACFT	A	B	C	D
RNP (0.3)	489 (351)	497 (359)	509 (371)	520 (382)

Prescribed Coding/Description RNP z RWY 01R (AR)

Path Desc	Waypoint Identifier	Fly-over	Course °M(°T)	Dist (NM)	Turn Dir	Altitude	Speed	VPA/RDH	ARC Radius (NM)	ARC Center	Nav Spec
IF	REYMY	-	-	-	-	+4000	-	-	-	-	RNP 1.0
TF	SA575	-	244° (249.5°)	6.1	-	+2500	+180	-	-	-	RNP 1.0
TF	SA571	-	243° (249.4°)	2.5	-	2300	-180	-	-	-	RNP 0.3
RF	SA638	-	-	4.3	R	-	-	-3.0	2.0529	SA569	RNP 0.3
TF	RW01R	Y	004° (010.4°)	2.3	-	188	-	-3.0	-	-	RNP 0.3