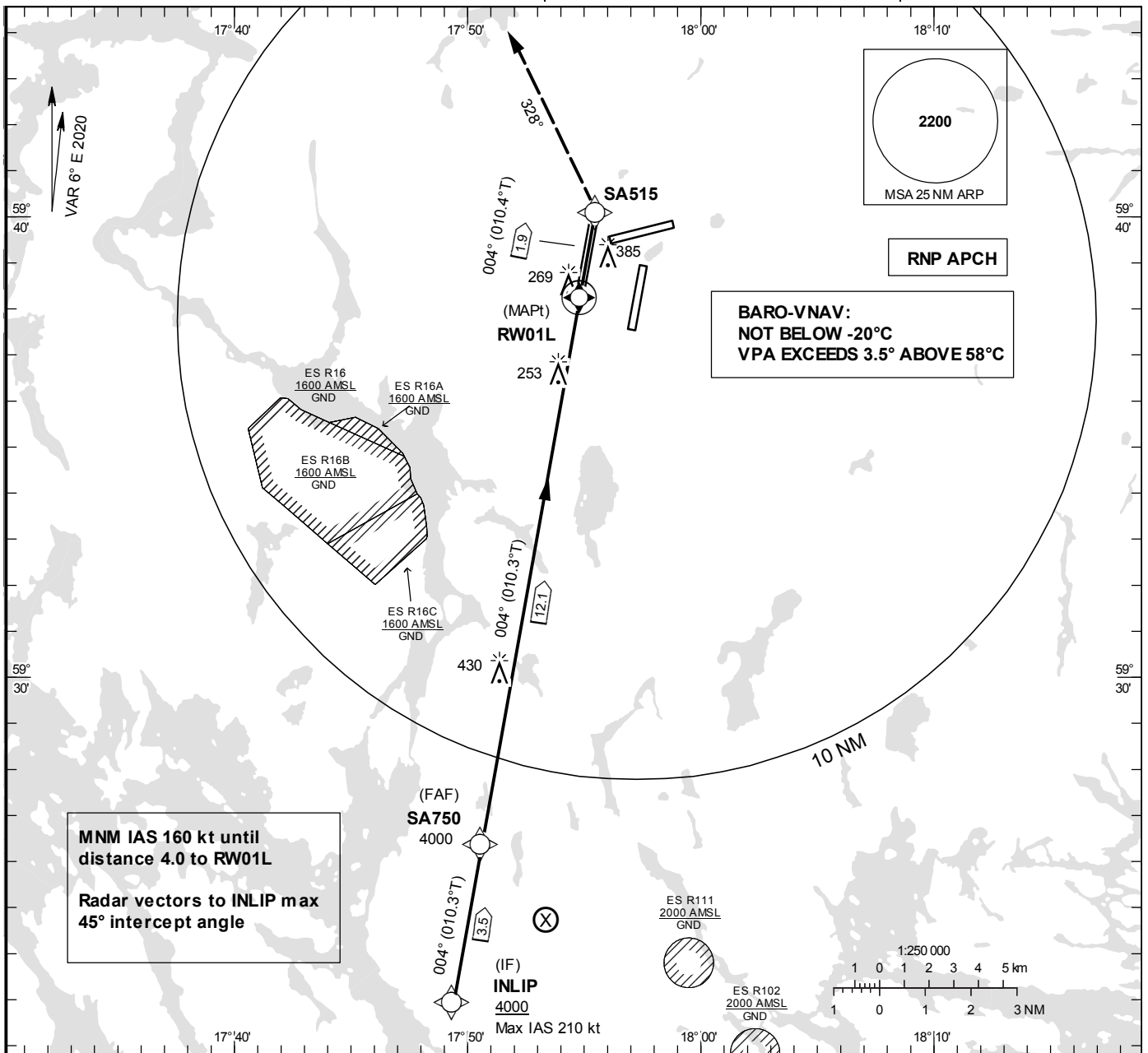


**INSTRUMENT APPROACH CHART – ICAO**

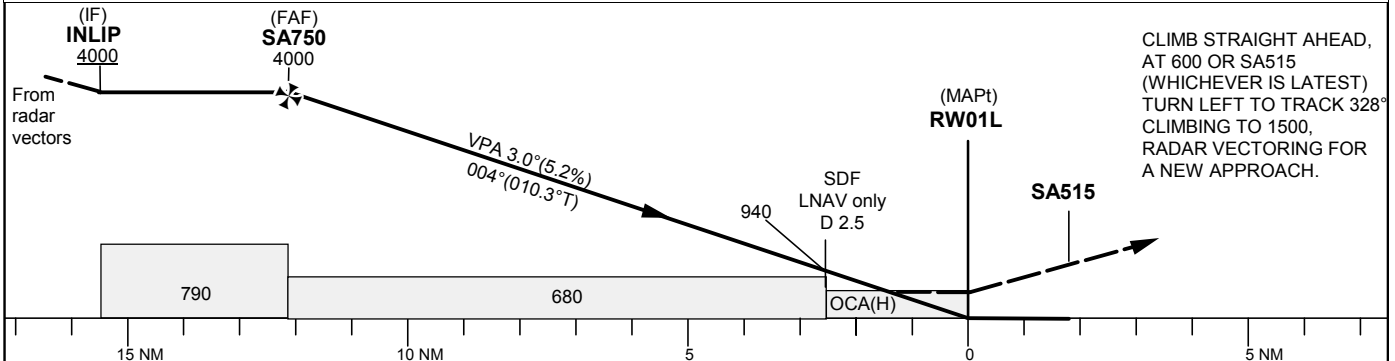
**THR ELEV 98.6 ft, AD ELEV 138 ft**  
 OCH are related to THR.  
 BRG are MAG (True).  
 ALT, HGT and ELEV in ft.

**ARLANDA TOWER** 128.730/  
118.505/125.130  
**ARLANDA ATIS ARR** 119.005  
**STOCKHOLM APPROACH** 123.755

**RNP RWY 01L**



TA 5000 ft AMSL RDH 50.0 ft Special Com Failure Procedures see ESSA AD 2.22



OCA (H)					Final approach		Distance FAF-MAPt 12.1 NM								
Cat of ACFT	A	B	C	D	Dist to RW01L	11	10	9	8	7	6	5	4	3	2
LNAV/VNAV	399 (301)	411 (313)	419 (321)	447 (349)	ALT	3650	3330	3010	2700	2380	2060	1740	1420	1100	780
LNAV	550 (450)				GS	kt	80	100	120	140	160	180			
					Rate of descent	ft/min	425	530	635	745	850	955			

RNP RWY 01L via INLIP

Path Term	Waypoint Identifier	Fly-over	Course°M(°T)	Dist (NM)	Turn Dir	Rest Alts (ft AMSL)	Speed Limits (kt)	VPA/ RDH (°/ft)	Rec Navaid	Navigation Specification
IF	INLIP	-	-	-	-	+4000	-210	-	-	RNP APCH
TF	SA750	-	004° (010.3°)	3.5	-	@4000	-	-	-	RNP APCH
TF	RW01L	Y	004° (010.3°)	12.1	-	@148	-	-3.0/50	-	RNP APCH
DF	SA515	Y	004° (010.4°)	1.9	-	-	-	-	-	RNP APCH
CA	-	-	004° (010.4°)	-	-	+600	-	-	ARL	RNP APCH
VM	-	-	328°	-	L	@1500	-	-	-	RNP APCH