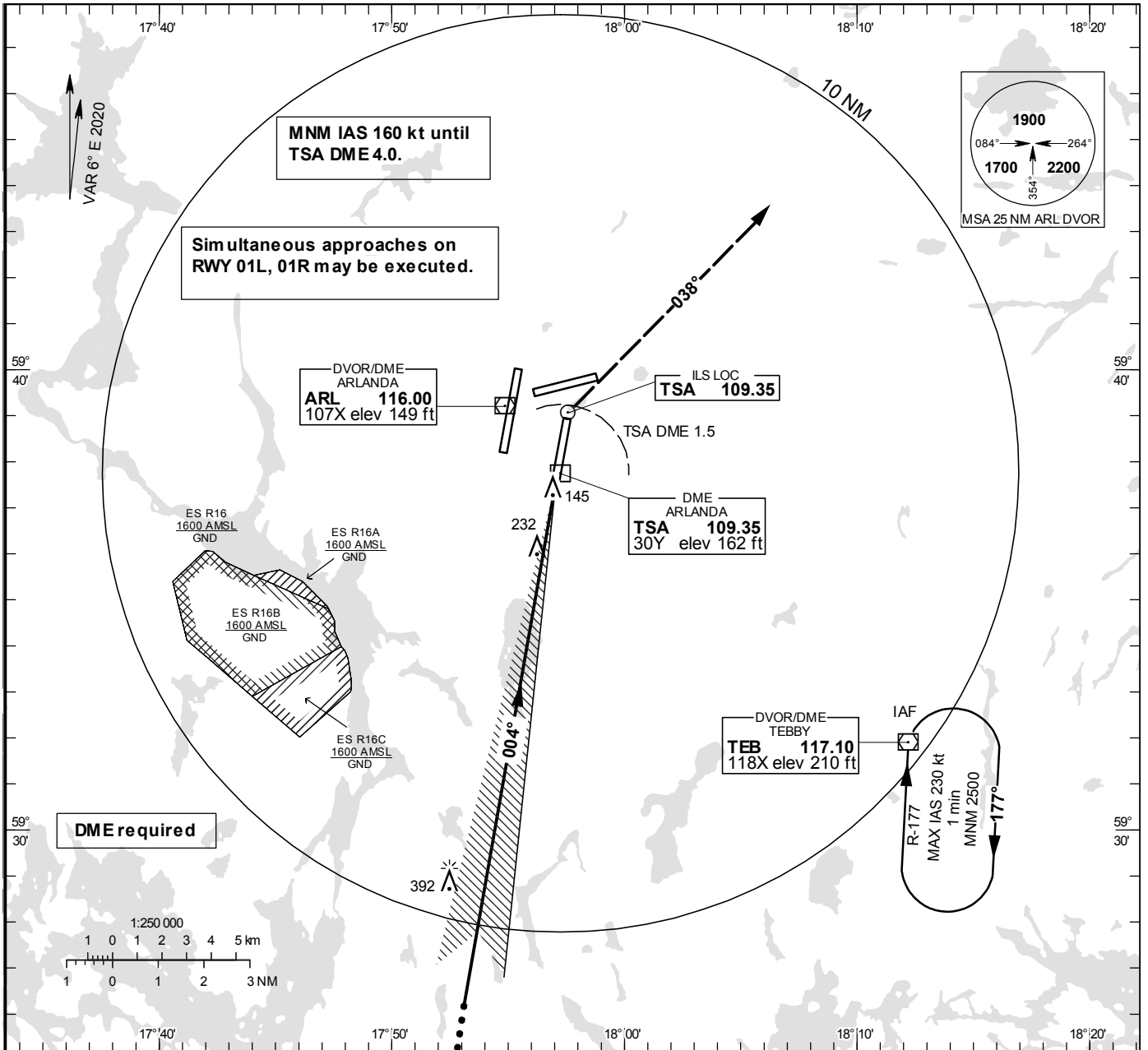


**INSTRUMENT APPROACH CHART – ICAO**

THR ELEV 138.0 ft, AD ELEV 138 ft  
 OCH are related to THR.  
 Circling OCH are related to AD ELEV.  
 BRG are MAG  
 ALT, HGT and ELEV in ft.

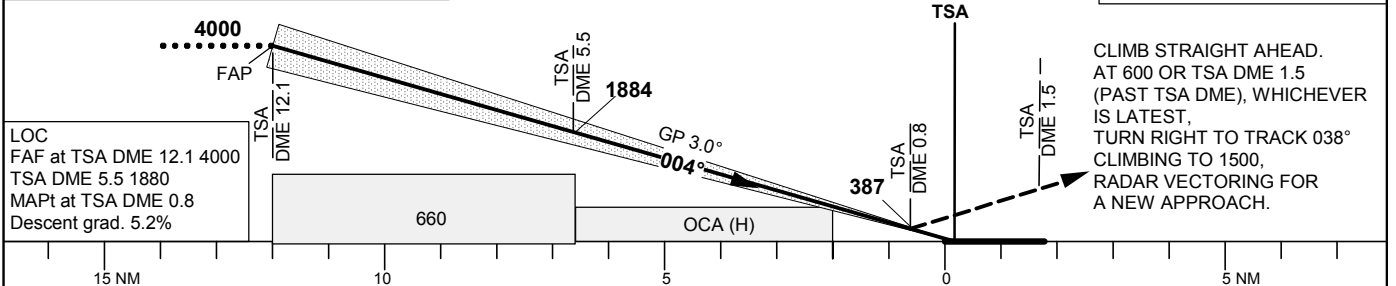
ARLANDA TOWER 125.130/  
 118.505/128.730  
 ARLANDA ATIS ARR 119.005  
 STOCKHOLM APPROACH 123.755

**ILS or LOC RWY 01R**



TA 5000 ft AMSL RDH 50.9 ft \* Timing not authorized for defining the MAPt

Special Com Failure Procedures see ESSA AD 2.22  
 Com Failure Chart see AD 2 ESSA 5-7  
 OM replaced by TSA DME 5.5  
 MM replaced by TSA DME 0.8



Final approach LOC Distance FAF-MAPt 11.3 NM\*

OCA (H)						DME TSA NM	11	10	9	8	7
Cat of ACFT	A	B	C	D	DL	ALT	3631	3316	2998	2679	2361
Straight-in Approach	Cat I	285 (147)	298 (160)	309 (171)	320 (182)	322 (184)	Distance	6	5	4	3
	Cat II	193 (55)	219 (81)	233 (95)	244 (106)	245 (107)	ALT	2043	1724	1406	1087
	LOC	490 (350)					GS	kt	80	100	120
Cat III B Approved						Time	min:s	8:31	6:49	5:40	4:52
						Rate of descent	ft/min	425	530	635	745