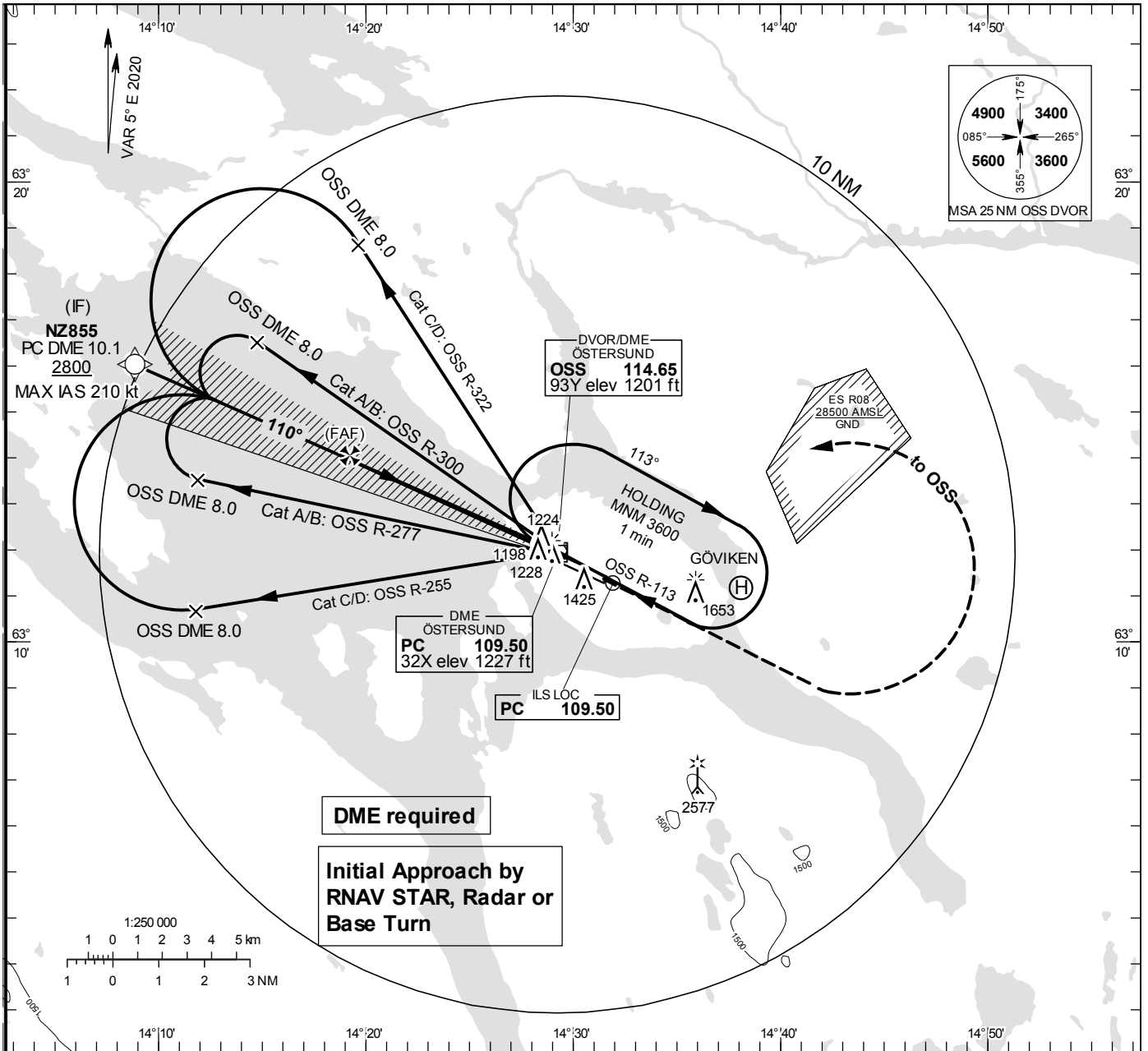


**INSTRUMENT
APPROACH
CHART – ICAO**

THR ELEV 1194.3 ft, AD ELEV 1233 ft
 OCH are related to THR.
 Circling OCH are related to AD ELEV.
 BRG are MAG
 ALT, HGT and ELEV in ft.

ÖSTERSUND TOWER 135.655

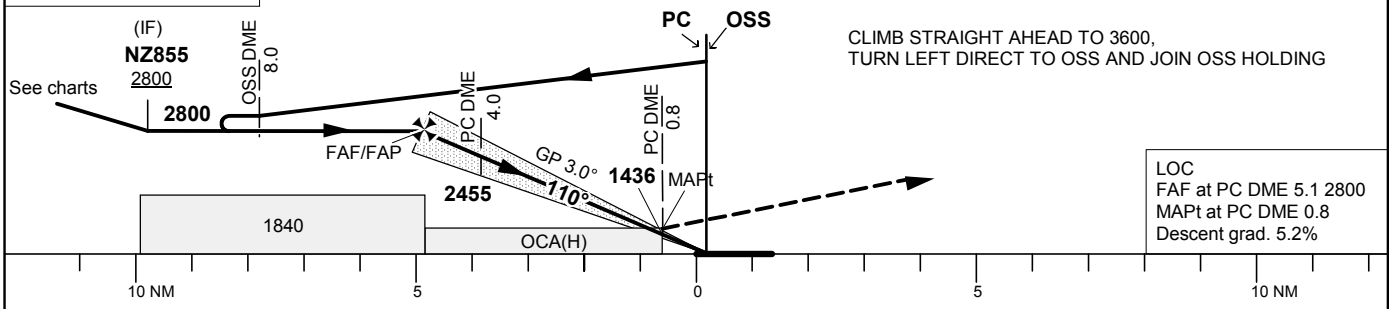
ILS or LOC RWY 12



DME required
**Initial Approach by
 RNAV STAR, Radar or
 Base Turn**

TA 6000 ft AMSL RDH 51.2 ft *Timing not authorized for defining the MAPt

OM replaced by PC DME 4.0
 MM replaced by PC DME 0.8



Cat of ACFT	OCA (H)				Final approach	LOC Distance FAF-MAPt 4.3 NM*							
	A	B	C	D		DME PC NM	5	4	3	2	1		
Straight-in Approach	Cat I	1345(151)	1354(160)	1366(172)	1378(184)	ALT	2774	2455	2137	1818	1500		
	Cat II	1247(53)	1258(64)	1273(79)	1290(96)	GS	kt	80	100	120	140	160	180
	LOC	1490(290)				Time	min:s	3:13	2:34	2:09	1:50	1:36	1:26
	Cat III B approved					Rate of descent	ft/min	425	530	635	745	850	955
Circling	1740(500)	1970(730)	2070(830)	3000(1760)									