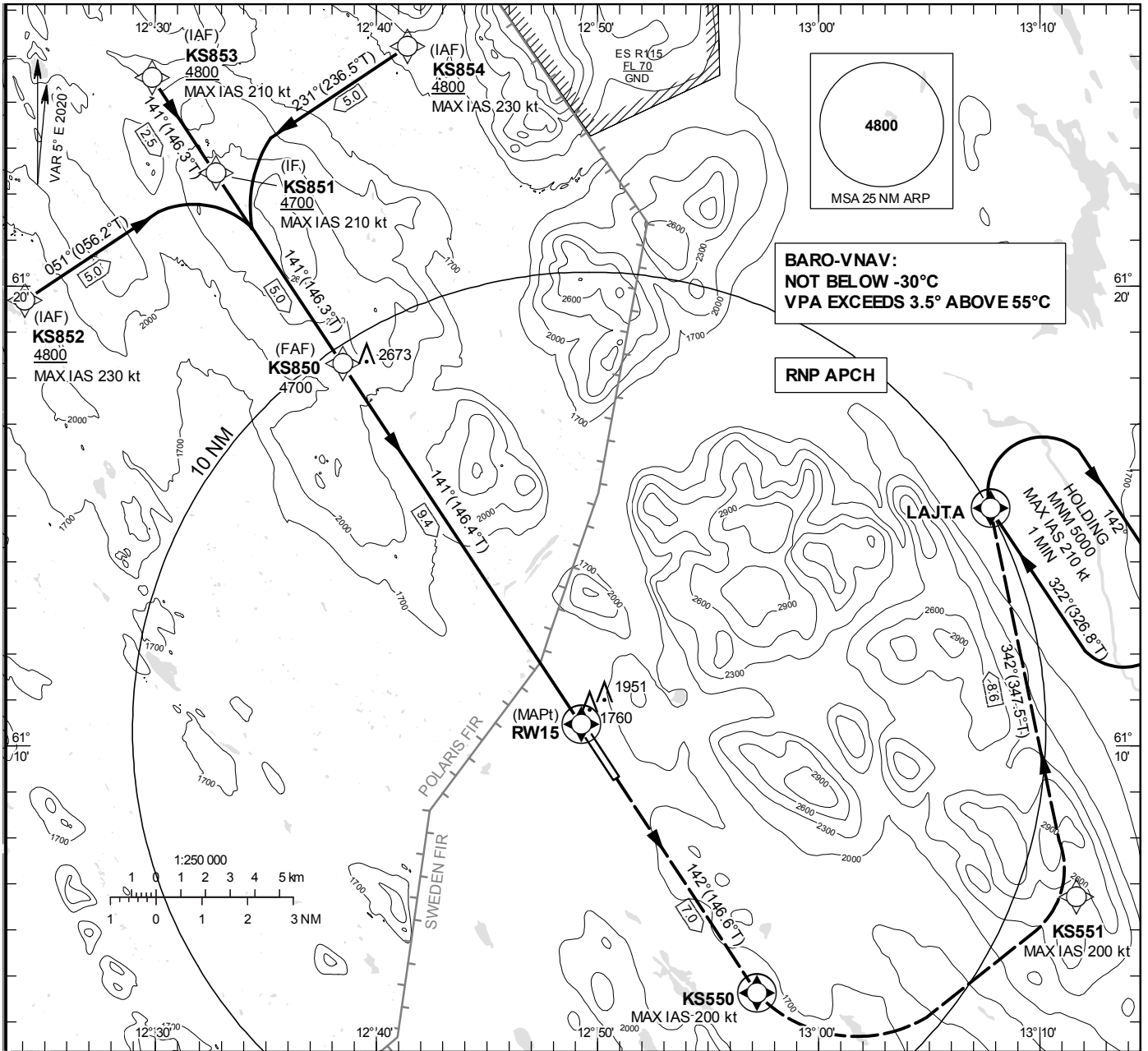


**INSTRUMENT APPROACH CHART – ICAO**

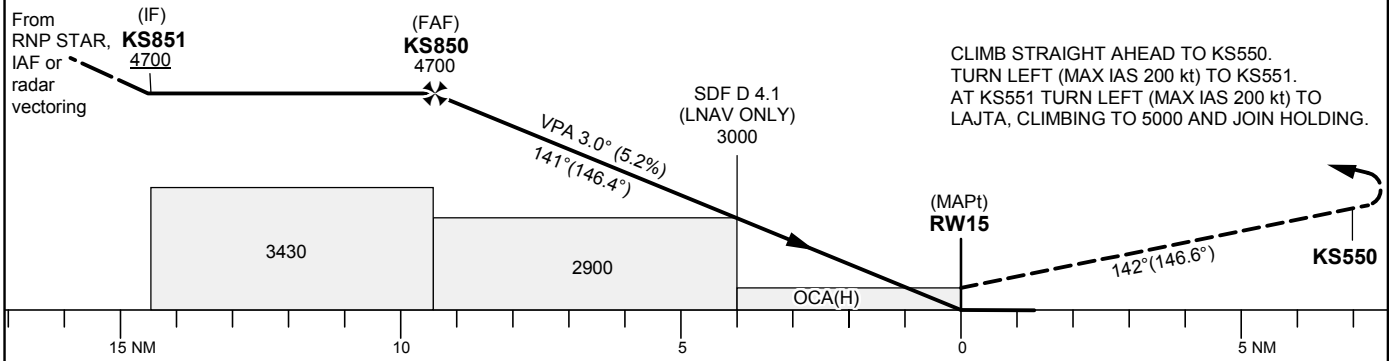
**THR ELEV 1643.8 ft, AD ELEV 1649 ft**  
 OCH are related to THR.  
 BRG are MAG (True).  
 ALT, HGT and ELEV in ft.

SÄLEN TOWER 124.460

RNP RWY 15



TA 6000 ft AMSL RDH 50.0 ft



Cat of ACFT	OCA (H)				Final approach	Distance FAF-MAPt 9.4 NM							
	A	B	C	D		Dist to RW15	9	8	7	6	5	4	3
LNAV/VNAV	1960(320)	1960(320)	1960(320)	1960(320)	ALT	4560	4240	3920	3600	3290	2970	2650	2330
LNAV	2010(370)				GS	kt	80	100	120	140	160	180	
					Rate of descent	ft/min	425	530	635	745	850	955	

**RNP RWY 15 via KS852**

Path Desc	Waypoint Identifier	Fly-over	Course °M(°T)	Dist (NM)	Turn Dir	Altitude	Speed	VPA/RDH	Rec Navaid	Navigation Specification
IF	KS852	-	-	-	-	+4800	-230	-	-	RNP APCH
TF	KS851	-	051°(056.2°)	5.0	-	+4700	-	-	-	RNP APCH

**RNP RWY 15 via KS853**

Path Desc	Waypoint Identifier	Fly-over	Course °M(°T)	Dist (NM)	Turn Dir	Altitude	Speed	VPA/RDH	Rec Navaid	Navigation Specification
IF	KS853	-	-	-	-	+4800	-210	-	-	RNP APCH
TF	KS851	-	141°(146.3°)	2.5	-	+4700	-	-	-	RNP APCH

**RNP RWY 15 via KS854**

Path Desc	Waypoint Identifier	Fly-over	Course °M(°T)	Dist (NM)	Turn Dir	Altitude	Speed	VPA/RDH	Rec Navaid	Navigation Specification
IF	KS854	-	-	-	-	+4800	-230	-	-	RNP APCH
TF	KS851	-	231°(236.5°)	5.0	-	+4700	-	-	-	RNP APCH

Path Desc	Waypoint Identifier	Fly-over	Course °M(°T)	Dist (NM)	Turn Dir	Altitude	Speed	VPA/RDH	Rec Navaid	Navigation Specification
IF	KS851	-	-	-	-	+4700	-210	-	-	RNP APCH
TF	KS850	-	141°(146.3°)	5.0	-	@4700	-	-	-	RNP APCH
TF	RW15	Y	141°(146.4°)	9.4	-	@1694	-	-3.0/50	-	RNP APCH
TF	KS550	Y	142°(146.6°)	7.0	-	-	-200	-	-	RNP APCH
DF	KS551	-	-	-	L	-	-200	-	-	RNP APCH
TF	LAJTA	-	342°(347.5°)	8.6	-	+5000	-200	-	-	RNP APCH

**ESKS Holding LAJTA**

Path Desc	Waypoint Identifier	Fly-over	Course °M(°T)	Dist (NM)	Turn Dir	Altitude	Speed	VPA/RDH	Rec Navaid	Navigation Specification
HM	LAJTA	Y	322°(326.8°)	-	R	+5000	-210	-	-	RNP 1