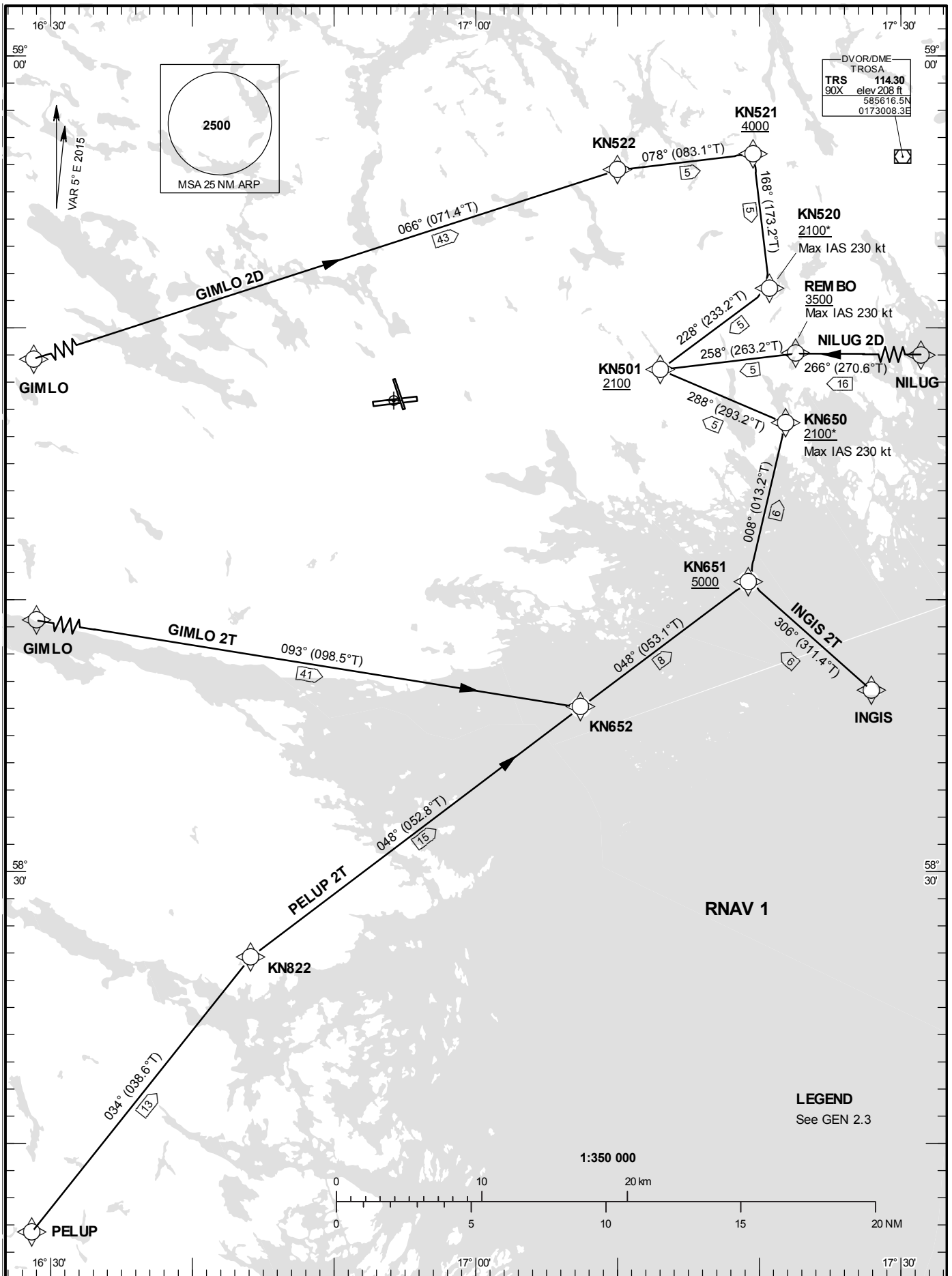


STANDARD INSTRUMENT
ARRIVAL CHART (STAR) -
ICAO

HGT and ALT in ft
BRG are MAG (True)
TA 5000 ft AMSL

SKAVSTA TOWER	127.705
ÖSTGÖTA APPROACH	132.955

RNAV (GNSS) STAR RWY 26



Prescribed Coding of RNAV STAR for RWY 26

GIMLO 2D

Path Desc	Waypoint Identifier	Fly-over	Course °M(°T)	Dist (NM)	Turn Dir	Altitude	Speed	VPA/RDH	Rec Navaid	Navigation Specification
IF	GIMLO	-	-	-	-	-	-	-	-	RNAV 1
TF	KN522	-	066°(071.4°)	43.4	-	-	-	-	-	RNAV 1
TF	KN521	-	078°(083.1°)	5.0	-	+4000	-	-	-	RNAV 1
TF	KN520	-	168°(173.2°)	5.0	-	+2100	-230	-	-	RNAV 1
TF	KN501	-	228°(233.2°)	5.0	-	+2100	-	-	-	RNAV 1

STAR instruction: GIMLO – KN522 – KN521 (4000 ft or above) – KN520 (max IAS 230 kt, 2100 ft or above) – KN501 (2100 ft or above)

GIMLO 2T

Path Desc	Waypoint Identifier	Fly-over	Course °M(°T)	Dist (NM)	Turn Dir	Altitude	Speed	VPA/RDH	Rec Navaid	Navigation Specification
IF	GIMLO	-	-	-	-	-	-	-	-	RNAV 1
TF	KN652	-	093°(098.5°)	40.6	-	-	-	-	-	RNAV 1
TF	KN651	-	048°(053.1°)	7.7	-	+5000	-	-	-	RNAV 1
TF	KN650	-	008°(013.2°)	6.0	-	+2100	-230	-	-	RNAV 1
TF	KN501	-	288°(293.2°)	5.0	-	+2100	-	-	-	RNAV 1

STAR instruction: GIMLO – KN652 – KN651 (5000 ft or above) – KN650 (max IAS 230 kt, 2100 ft or above) – KN501 (2100 ft or above)

INGIS 2T

Path Desc	Waypoint Identifier	Fly-over	Course °M(°T)	Dist (NM)	Turn Dir	Altitude	Speed	VPA/RDH	Rec Navaid	Navigation Specification
IF	INGIS	-	-	-	-	-	-	-	-	RNAV 1
TF	KN651	-	306°(311.4°)	6.1	-	+5000	-	-	-	RNAV 1
TF	KN650	-	008°(013.2°)	6.0	-	+2100	-230	-	-	RNAV 1
TF	KN501	-	288°(293.2°)	5.0	-	+2100	-	-	-	RNAV 1

STAR instruction: INGIS – KN651 (5000 ft or above) – KN650 (max IAS 230 kt, 2100 ft or above) – KN501 (2100 ft or above)

NILUG 2D

Path Desc	Waypoint Identifier	Fly-over	Course °M(°T)	Dist (NM)	Turn Dir	Altitude	Speed	VPA/RDH	Rec Navaid	Navigation Specification
IF	NILUG	-	-	-	-	-	-	-	-	RNAV 1
TF	REMBO	-	266°(270.6°)	15.9	-	+3500	-230	-	-	RNAV 1
TF	KN501	-	258°(263.2°)	5.0	-	+2100	-	-	-	RNAV 1

STAR instruction: NILUG – REMBO (max IAS 230 kt, 3500 ft or above) – KN501 (2100 ft or above)

PELUP 2T

Path Desc	Waypoint Identifier	Fly-over	Course °M(°T)	Dist (NM)	Turn Dir	Altitude	Speed	VPA/RDH	Rec Navaid	Navigation Specification
IF	PELUP	-	-	-	-	-	-	-	-	RNAV 1
TF	KN822	-	034°(038.6°)	13.0	-	-	-	-	-	RNAV 1
TF	KN652	-	048°(052.8°)	15.3	-	-	-	-	-	RNAV 1
TF	KN651	-	048°(053.1°)	7.7	-	+5000	-	-	-	RNAV 1
TF	KN650	-	008°(013.2°)	6.0	-	+2100	-230	-	-	RNAV 1
TF	KN501	-	288°(293.2°)	5.0	-	+2100	-	-	-	RNAV 1

STAR instruction: PELUP – KN822 – KN652 – KN651(5000 ft or above) – KN650 (max IAS 230 kt, 2100 ft or above) – KN501 (2100 ft or above)