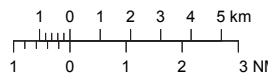


VISUAL APPROACH CHART - ICAO

1:250000



AD ELEV 59 FEET

ELEV and ALT in ft
HGT in ft above AD ELEV

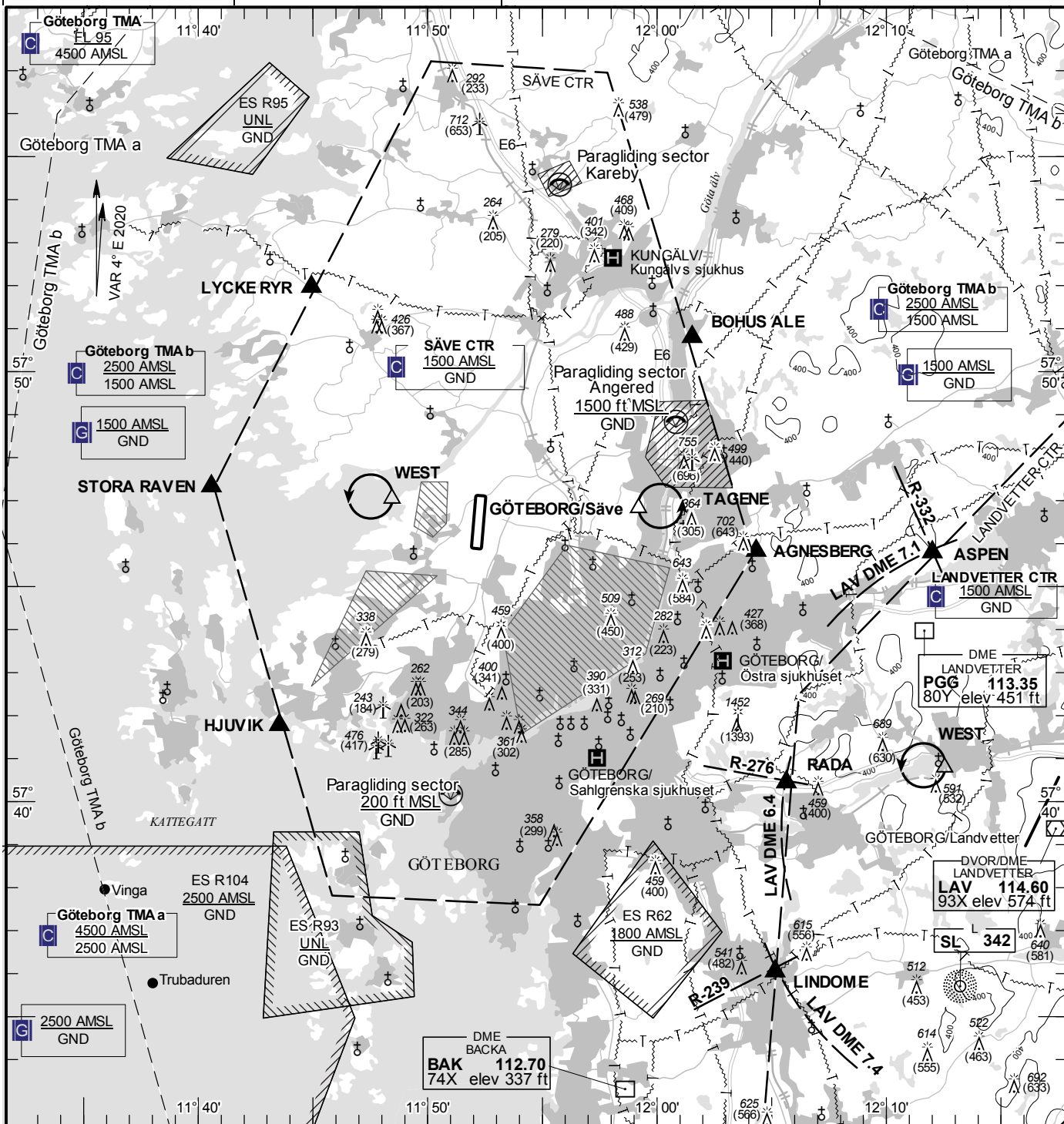
TA 5000 AMSL

SÄVE TOWER

119.055

AD 2 ESGP 6-1

**GÖTEBORG/Säve
SWEDEN**



Communication failure

- 1 SQUAWK 7600
- 2 Enter CTR via AGNESBERG - Holding TAGENE or via STORA RAVEN - Holding WEST at or below 1500 ft AMSL to join traffic circuit.
Transmit blind your intentions.
- 3 Flash LDG-lights and watch TWR for optical signals.

Remark

Obstacle below 197 ft AGL not shown in CTR.
Noise sensitive area, to be avoided.

RWY	THR	PAPI
NR	ELEV	(MEHT)
01	51 ft	NIL
19	48 ft	NIL

Legend
See GEN 2.3

Entry / exit point

LYCKE RYR	575157N 0114456E
BOHUS ALE	575047N 0120132E
AGNESBERG	574549N 0120419E
HJUVIK	574146N 0114332E
STORA RAVEN	574719N 0114034E

Holding

TAGENE:	Hold over gravel pit east of point 574649N 0115912E
WEST:	Hold west of Nolvik over the sea, west of point 574702N 0114826E

LFV

CHANGE: HLDG TAGENE new. HLDG EAST withdrawn. Paragliding Sector Kareby new. Model flying areas withdrawn, editorial.

AIRAC AMDT 3/2021 **17 JUN 2021**

Reverse side intentionally blank