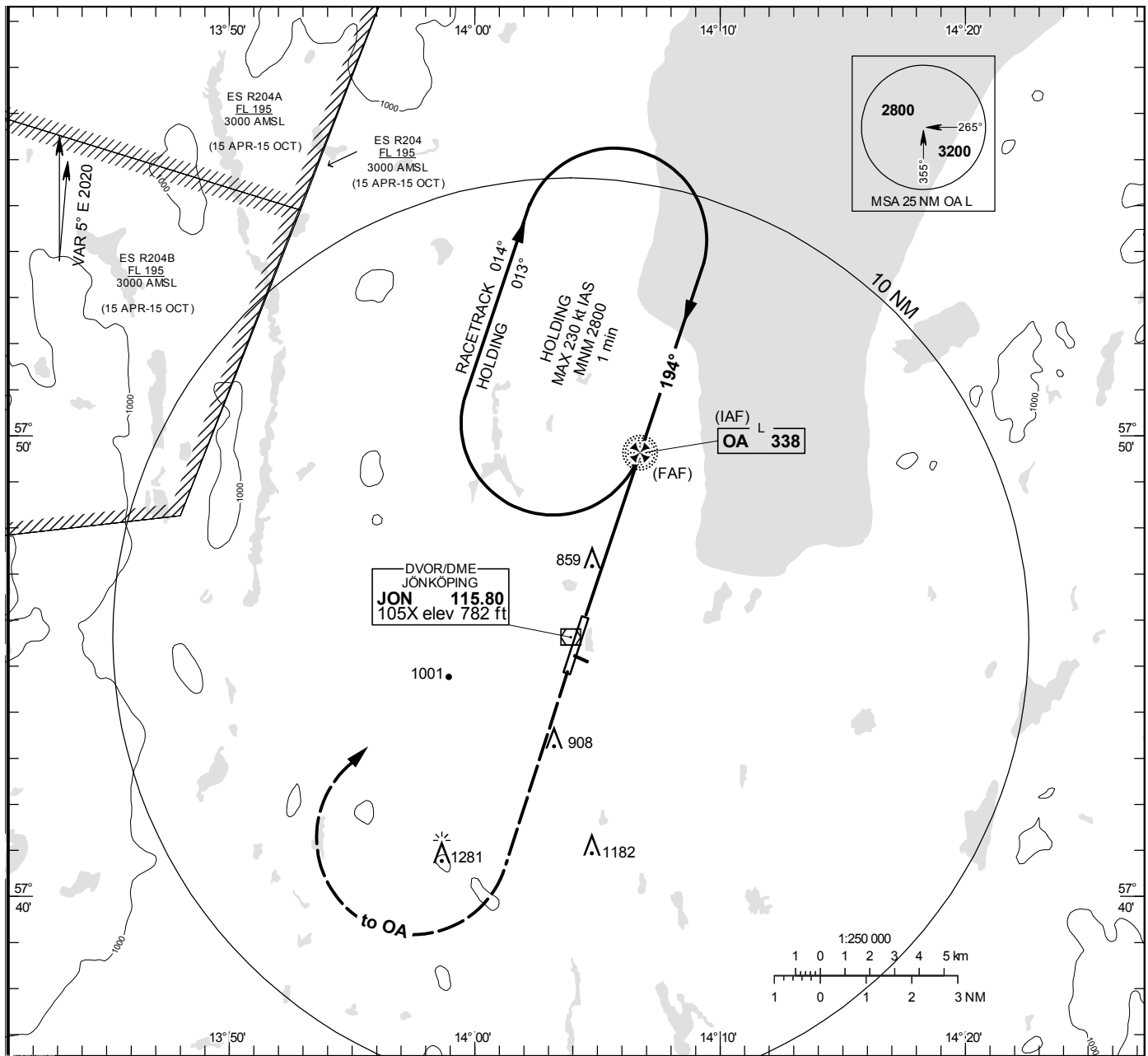


NDB RWY 19

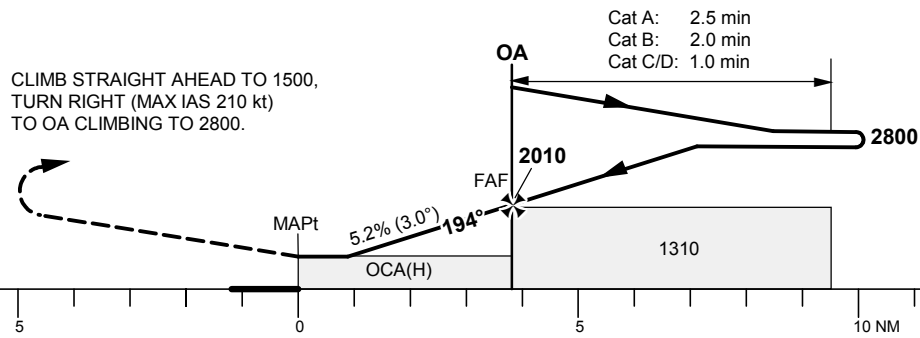
JÖNKÖPING TOWER 118.255

THR ELEV 739.1 ft, AD ELEV 742 ft  
OCH are related to THR.  
Circling OCH are related to AD ELEV.  
BRG are MAG  
ALT. HGT and ELEV in ft.

INSTRUMENT  
APPROACH  
CHART – ICAO



TA 5000 ft AMSL



Cat A: 2.5 min  
Cat B: 2.0 min  
Cat C/D: 1.0 min

CLIMB STRAIGHT AHEAD TO 1500,  
TURN RIGHT (MAX IAS 210 kt)  
TO OA CLIMBING TO 2800.

Cat of ACFT	OCA (H)				Final approach		Distance FAF-MAPt 3.8 NM					
	A	B	C	D	DME JON NM	4	3	2				
Straight-in Approach	1110(380)				ALT	1920	1600	1280				
Circling (Max IAS 190 kt)	1210(470)	1300(560)	1600(860)	1640(900)	GS	kt	80	100	120	140	160	180
					Time	min:s	2:51	2:17	1:54	1:38	1:26	1:16
					Rate of descent	ft/min	425	530	635	745	850	955