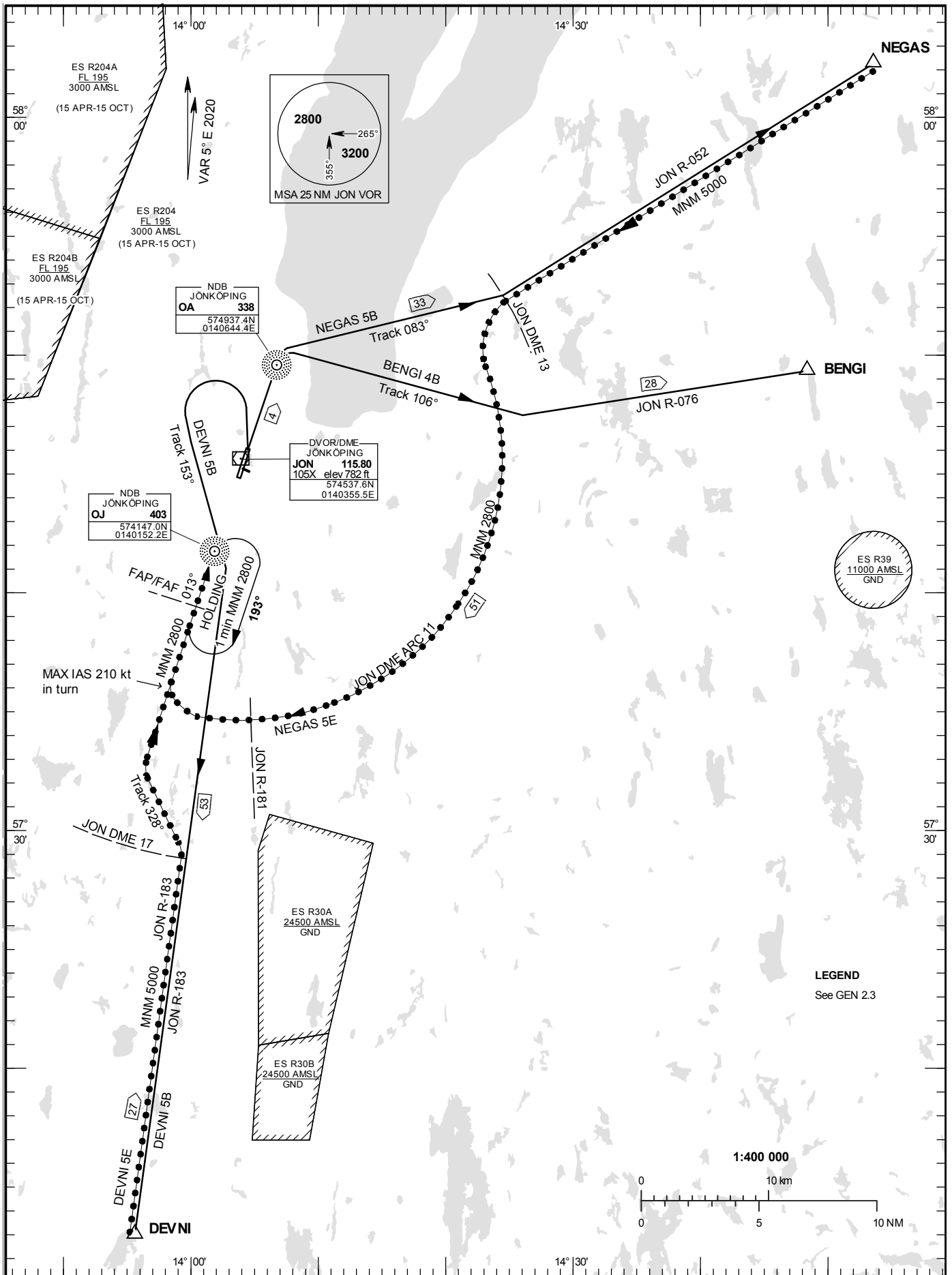


STANDARD INSTRUMENT  
DEPARTURE AND ARRIVAL  
CHART (SID/STAR) - ICAO

HGT and ALT in ft  
BRG are MAG  
TA 5000 ft AMSL

JÖNKÖPING TOWER 118.255

RWY 01



## DEPARTURE (SID) RWY 01

### BENGI FOUR BRAVO DEPARTURE (BENGI 4B)

Straight ahead to OA, turn right to track 106°. Intercept JON R-076 and proceed to BENGI.

### NEGAS FIVE BRAVO DEPARTURE (NEGAS 5B)

Straight ahead to OA, turn right to track 083°, intercept JON R-052 and proceed to NEGAS.

### DEVNI FIVE BRAVO DEPARTURE (DEVNI 5B)

Straight ahead to 1200 ft, turn left to track 153°, intercept JON R-183 and proceed to DEVNI.

## ARRIVAL (STAR) RWY 01

### REMARK

Descent to minimum altitude for an arrival route must not be initiated until an ATC clearance to this altitude or an approach clearance has been received.

### DEVNI FIVE ECHO ARRIVAL (DEVNI 5E)

At DEVNI intercept JON R-183, not below 5000 ft until JON DME 17. At JON DME 17 turn left to track 328° to intercept LOC SGJ, not below 2800 ft until FAP/FAF.

### NEGAS FIVE ECHO ARRIVAL (NEGAS 5E)

After NEGAS intercept JON R-052 and proceed to JON DME 13, not below 5000 ft. Turn left and proceed on JON DME ARC 11, not below 2800 ft.  
At JON R-181 turn right (MAX IAS 210 kt in turn) to intercept LOC SGJ, not below 2800 ft until FAF/FAF.