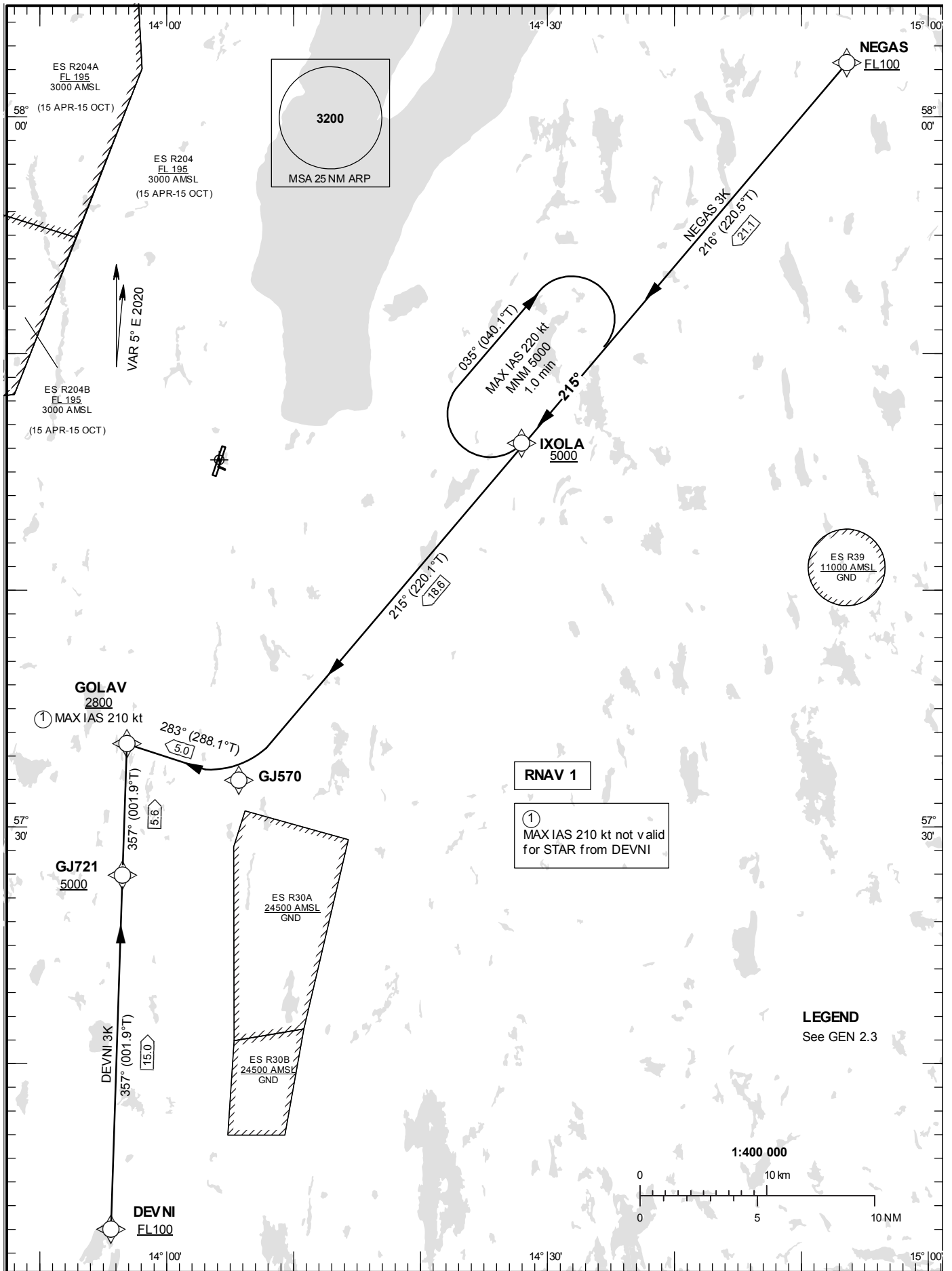


STANDARD INSTRUMENT
ARRIVAL CHART (STAR) -
ICAO

HGT and ALT in ft
BRG are MAG (True)
TA 5000 ft AMSL

JÖNKÖPING TOWER 118.255

RNAV (GNSS) STAR RWY 01



Prescribed Coding of RNAV STAR for RWY 01**DEVNI 3K**

Path Term	Waypoint Identifier	Fly-over	Course °M(°T)	Dist (NM)	Turn Dir	Rest Alts (ft AMSL)	Speed Limits (kt)	VPA/RDH (°/ft)	Rec Navaid	Navigation Specification
IF	DEVNI	-	-	-	-	+FL100	-	-	-	RNAV 1
TF	GJ721	-	357°(001.9°)	15.0	-	+5000	-	-	-	RNAV 1
TF	GOLAV	-	357°(001.9°)	5.6	-	+2800	-	-	-	RNAV 1

STAR instruction: DEVNI (FL100 or above) – GJ721 (5000 ft or above) – GOLAV (2800 ft or above)

NEGAS 3K

Path Term	Waypoint Identifier	Fly-over	Course °M(°T)	Dist (NM)	Turn Dir	Rest Alts (ft AMSL)	Speed Limits (kt)	VPA/RDH (°/ft)	Rec Navaid	Navigation Specification
IF	NEGAS	-	-	-	-	+FL100	-	-	-	RNAV 1
TF	IXOLA	-	216°(220.5°)	21.1	-	+5000	-	-	-	RNAV 1
TF	GJ570	-	215°(220.1°)	18.6	-	-	-	-	-	RNAV 1
TF	GOLAV	-	283°(288.1°)	5.0	-	+2800	-210	-	-	RNAV 1

STAR instruction: NEGAS (FL100 or above) – IXOLA (5000 ft or above) – GJ570 – GOLAV (2800 ft or above, MAX IAS 210 kt)