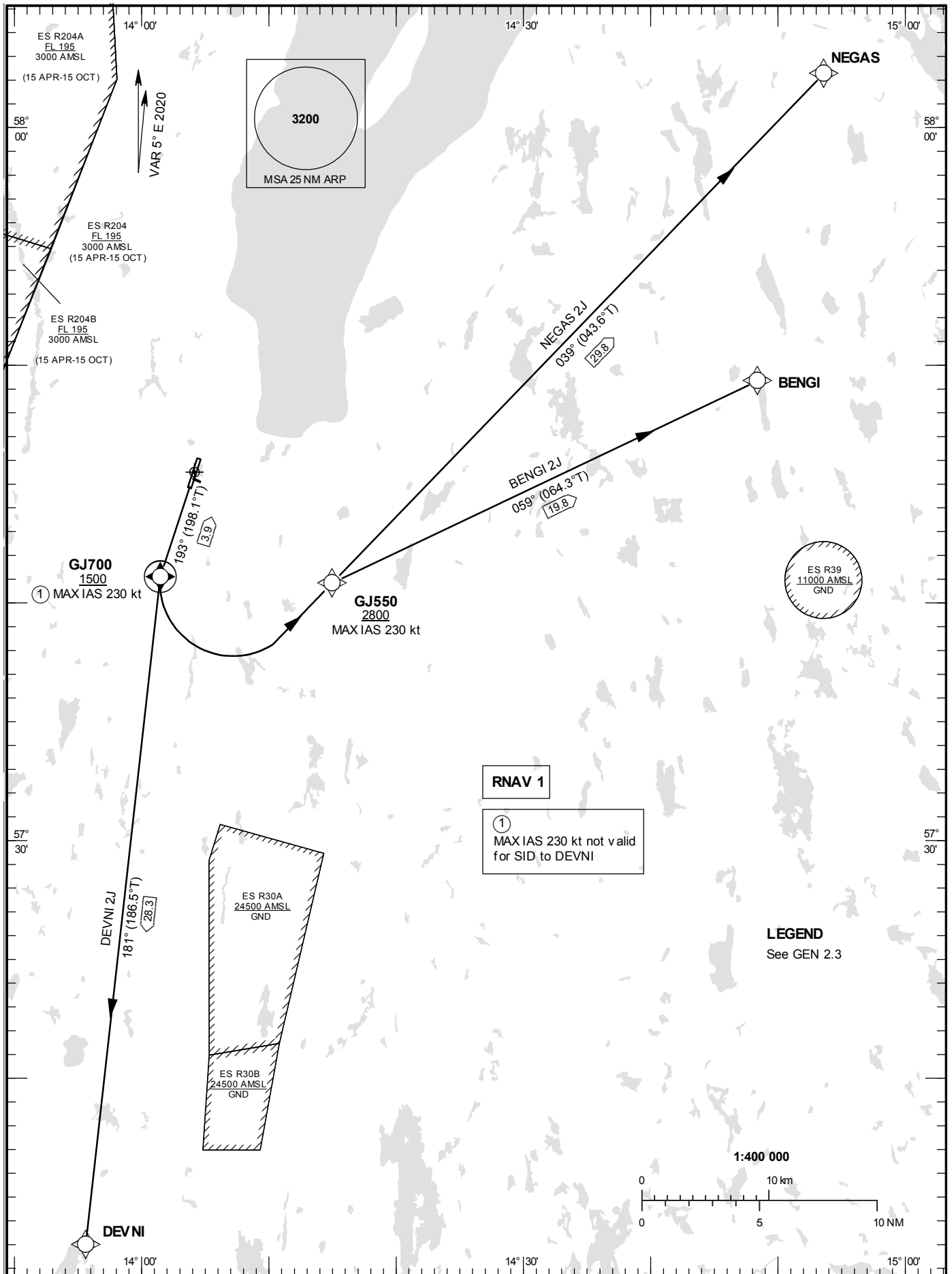


STANDARD INSTRUMENT  
DEPARTURE CHART (SID) -  
ICAO

HGT and ALT in ft  
BRG are MAG (True)  
TA 5000 ft AMSL

JÖNKÖPING TOWER 118.255

RNAV (GNSS) SID RWY 19



## Prescribed Coding of RNAV SID for RWY 19

## BENGI 2J

Path Term	Waypoint Identifier	Fly-over	Course °M(°T)	Dist (NM)	Turn Dir	Rest Alts (ft AMSL)	Speed Limits (kt)	VPA/ RDH (°/ft)	Rec Navaid	Navigation Specification
CF	GJ700	Y	193°(198.1°)	3.9	-	+1500	-230	-	JON	RNAV 1
DF	GJ550	-	-	-	L	+2800	-230	-	-	RNAV 1
TF	BENGI	-	059°(064.3°)	19.8	-	-	-	-	-	RNAV 1

SID instruction: GJ700 (MAX IAS 230 kt, 1500 ft or above) – GJ550 (MAX IAS 230 kt, 2800 ft or above) – BENGI

## DEVNI 2J

Path Term	Waypoint Identifier	Fly-over	Course °M(°T)	Dist (NM)	Turn Dir	Rest Alts (ft AMSL)	Speed Limits (kt)	VPA/ RDH (°/ft)	Rec Navaid	Navigation Specification
CF	GJ700	Y	193°(198.1°)	3.9	-	+1500	-230	-	JON	RNAV 1
TF	DEVNI	-	181°(186.5°)	28.3	-	-	-	-	-	RNAV 1

SID instruction: GJ700 (1500 ft or above) – DEVNI

## NEGAS 2J

Path Term	Waypoint Identifier	Fly-over	Course °M(°T)	Dist (NM)	Turn Dir	Rest Alts (ft AMSL)	Speed Limits (kt)	VPA/ RDH (°/ft)	Rec Navaid	Navigation Specification
CF	GJ700	Y	193°(198.1°)	3.9	-	+1500	-230	-	JON	RNAV 1
DF	GJ550	-	-	-	L	+2800	-230	-	-	RNAV 1
TF	NEGAS	-	039°(043.6°)	29.8	-	-	-	-	-	RNAV 1

SID instruction: GJ700 (MAX IAS 230 kt, 1500 ft or above) – GJ550 (MAX IAS 230 kt, 2800 ft or above) – NEGAS