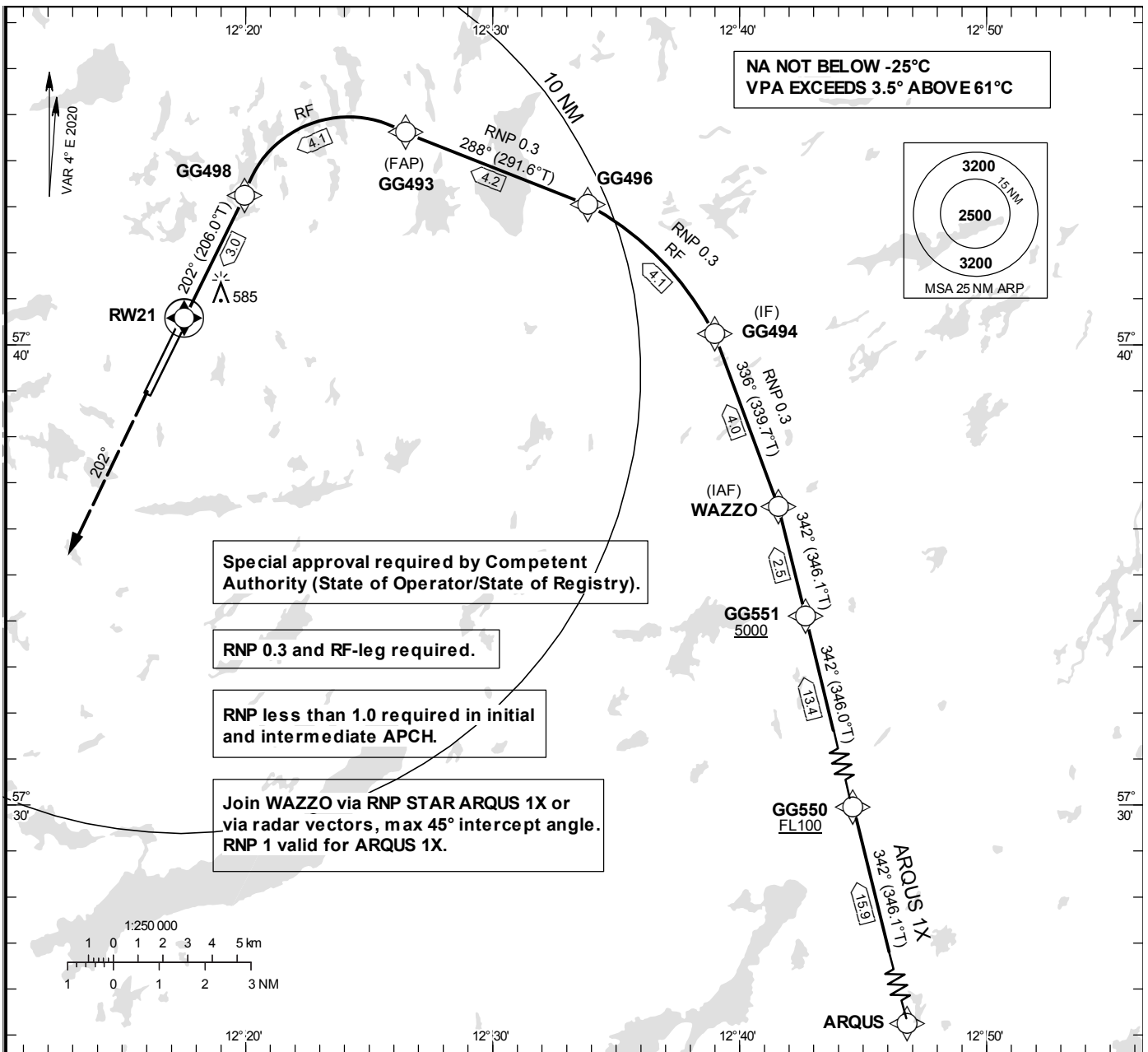


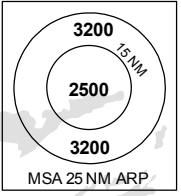
INSTRUMENT APPROACH CHART – ICAO
THR ELEV 506.4 ft, AD ELEV 507 ft
 OCH are related to THR.
 BRG are MAG (True).
 ALT, HGT and ELEV in ft.

LANDVETTER TOWER	118.605
LANDVETTER ATIS	118.380
GÖTEBORG APPROACH	124.680

RNP y RWY 21 (AR)



NA NOT BELOW -25°C
 VPA EXCEEDS 3.5° ABOVE 61°C



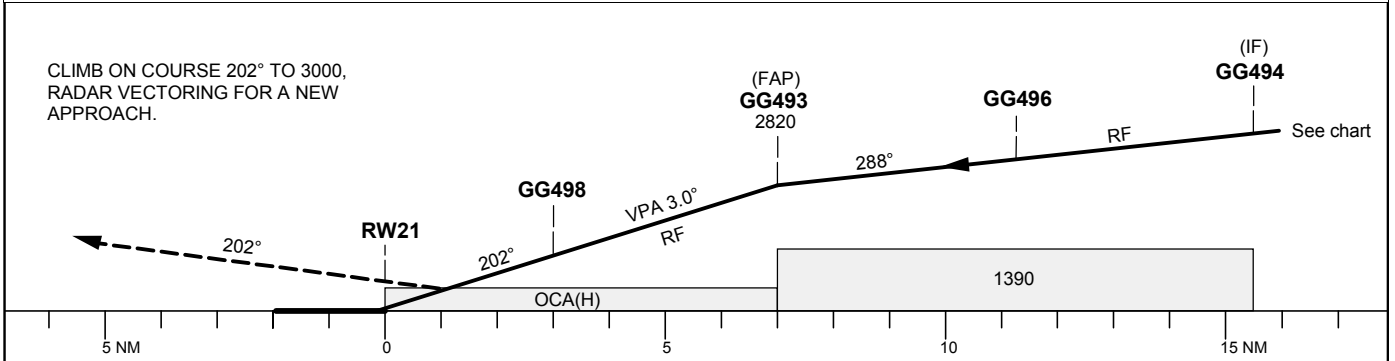
Special approval required by Competent Authority (State of Operator/State of Registry).

RNP 0.3 and RF-leg required.

RNP less than 1.0 required in initial and intermediate APCH.

Join WAZZO via RNP STAR ARQUS 1X or via radar vectors, max 45° intercept angle. RNP 1 valid for ARQUS 1X.

TA 5000 ft AMSL RDH 49.9 ft



Cat of ACFT	OCH (H)				Dist to RWY21	NM	7	6	5	4	3	2
	A	B	C	D								
RNP 0.3	835(329)				ALT	ft	2785	2467	2148	1830	1512	1193

RNP STAR RWY 21 – ARQUS 1X

Path Term	Waypoint Identifier	Fly-over	Course °M(°T)	Dist (NM)	Turn Dir	Altitude	Speed (kts)	VPA/RDH (°/ft)	Rec Navaid	Navigation Specification
IF	ARQUS	-	-	-	-	-	-	-	-	RNP 1.0
TF	GG550	-	342°(346.1°)	15.9	-	+FL100	-	-	-	RNP 1.0
TF	GG551	-	342° (346.0°)	13.4	-	+5000	-	-	-	RNP 1.0
TF	WAZZO	-	342° (346.1°)	2.5	-	-	-	-	-	RNP 1.0

WPT sequence: ARQUS – GG550 (FL100 or above) – GG551 (5000 or above) – WAZZO.

RNP y RWY 21 (AR)

Path Term	Waypoint Identifier	Fly-over	Course °M(°T)	Dist (NM)	Turn Dir	Altitude	Speed (kts)	VPA/RDH (°/ft)	ARC Radius NM	ARC centre	Navigation Spec
IF	WAZZO	-	-	-	-	-	-	-	-	-	RNP 0.3
TF	GG494	-	336°(339.7°)	4.0	-	-	-	-	-	-	RNP 0.3
RF	GG496	-	-	4.1	L	-	-	-	4.860	GG998	RNP 0.3
TF	GG493	-	288° (291.6°)	4.2	-	@2820	-	-	-	-	RNP 0.3
RF	GG498	-	-	4.1	L	-	-	-3.00	2.768	GG999	RNP 0.3
TF	RW21	Y	202° (206.0°)	3.0	-	@556	-	-3.00/50	-	-	RNP 0.3
CA	-	-	202° (206.0°)	-	-	+3000	-	-	-	-	RNP APCH
VM	-	-	202°	-	-	@3000	-	-	-	-	RNP APCH