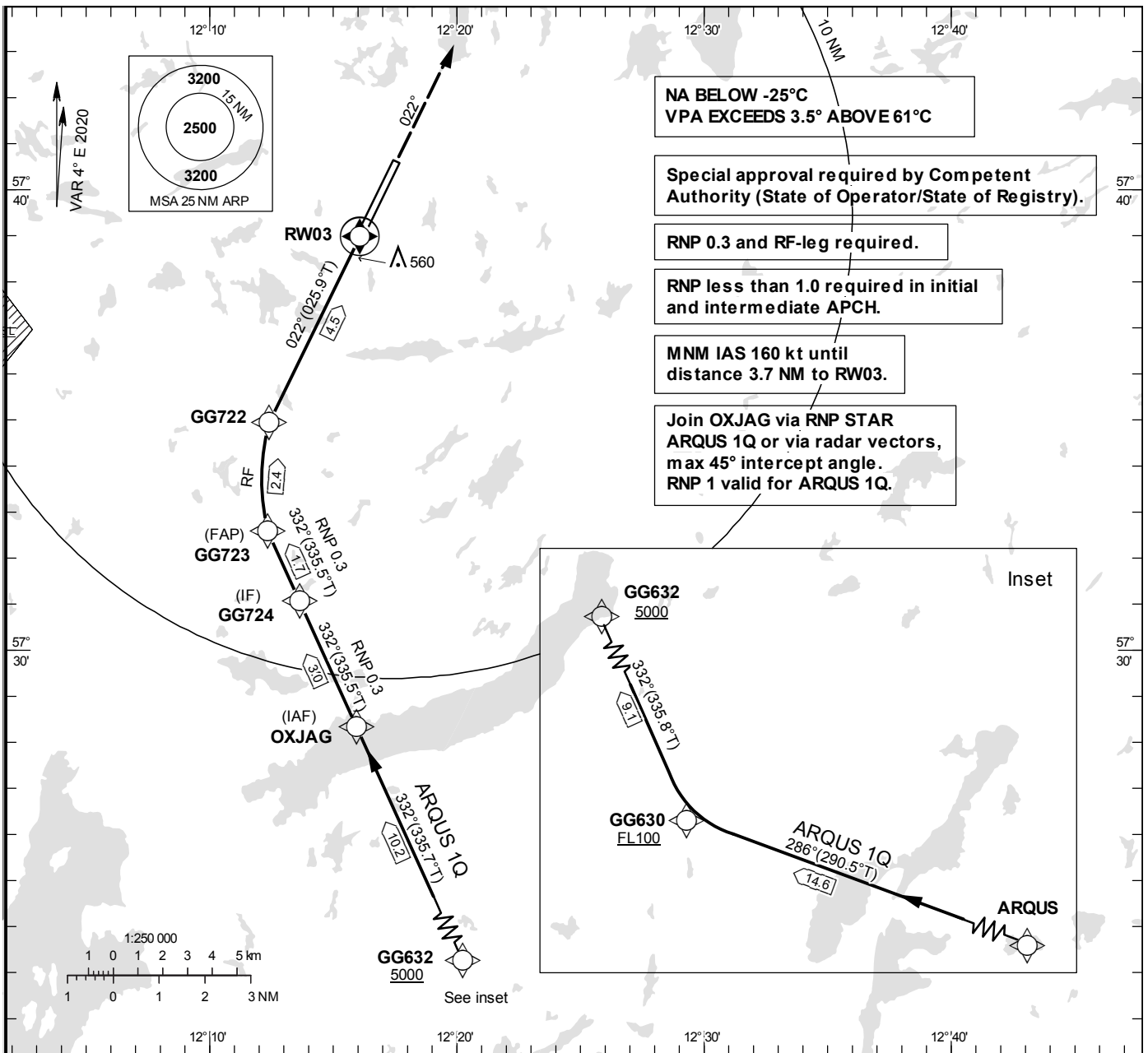


INSTRUMENT APPROACH CHART – ICAO
THR ELEV 478.3 ft, AD ELEV 507 ft
 OCH are related to THR.
 BRG are MAG (True).
 ALT, HGT and ELEV in ft.

LANDVETTER TOWER	118.605
LANDVETTER ATIS	118.380
GÖTEBORG APPROACH	124.680

RNP y RWY 03 (AR)



NA BELOW -25°C
 VPA EXCEEDS 3.5° ABOVE 61°C

Special approval required by Competent Authority (State of Operator/State of Registry).

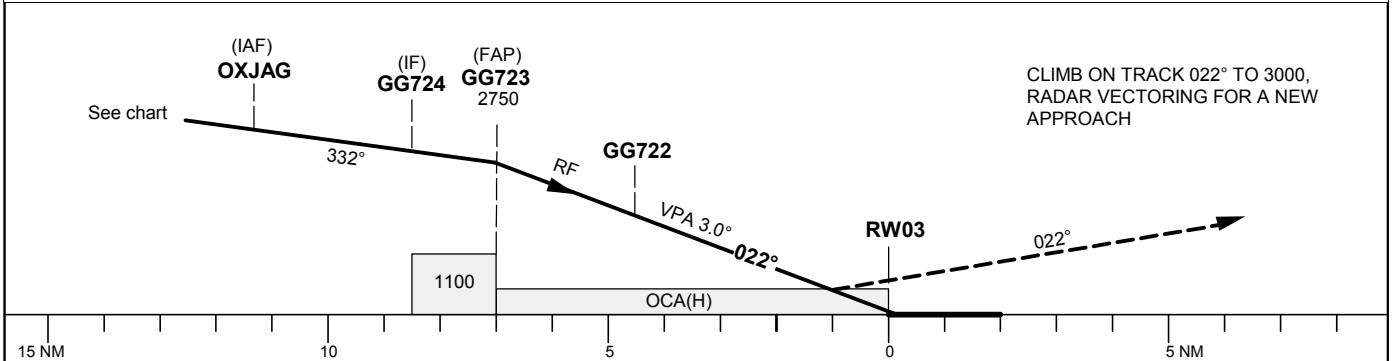
RNP 0.3 and RF-leg required.

RNP less than 1.0 required in initial and intermediate APCH.

MNM IAS 160 kt until distance 3.7 NM to RW03.

Join OXJAG via RNP STAR ARQUS 1Q or via radar vectors, max 45° intercept angle. RNP 1 valid for ARQUS 1Q.

TA 5000 ft AMSL RDH 54.1 ft



OCA (H)				
Cat of ACFT	A	B	C	D
RNP 0.3	810(332)			

CLIMB ON TRACK 022° TO 3000, RADAR VECTORING FOR A NEW APPROACH

RNP STAR RWY 03 – ARQUS 1Q

Path Term	Waypoint Identifier	Fly-over	Course °M(°T)	Dist (NM)	Turn Dir	Altitude	Speed (kts)	VPA/RDH (°/ft)	Rec Navaid	Navigation Specification
IF	ARQUS	-	-	-	-	-	-	-	-	RNP 1.0
TF	GG630	-	286°(290.5°)	14.6	-	+FL100	-	-	-	RNP 1.0
TF	GG632	-	332°(335.8°)	9.1	-	+5000	-	-	-	RNP 1.0
TF	OXJAG	-	332°(335.7°)	10.2	-	-	-	-	-	RNP 1.0

WPT sequence: ARQUS – GG630 (FL100 or above) – GG632 (5000 or above) – OXJAG.

RNP y RWY 03 (AR)

Path Term	Waypoint Identifier	Fly-over	Course °M(°T)	Dist (NM)	Turn Dir	Altitude	Speed (kts)	VPA/RDH (°/ft)	ARC Radius NM	ARC centre	Navigation Spec
IF	OXJAG	-	-	-	-	-	-	-	-	-	RNP 0.3
TF	GG724	-	332° (335.5°)	3.0	-	-	-	-	-	-	RNP 0.3
TF	GG723	-	332° (335.5°)	1.7	-	@2750	-	-	-	-	RNP 0.3
RF	GG722	-	-	2.4	R	-	-	-3.00	2.769	GG997	RNP 0.3
TF	RW03	Y	022° (025.9°)	4.5	-	@532	-	-3.00/54	-	-	RNP 0.3
CA	-	-	022° (025.9°)	-	-	+3000	-	-	-	-	RNP APCH
VM	-	-	022°	-	-	@3000	-	-	-	-	RNP APCH