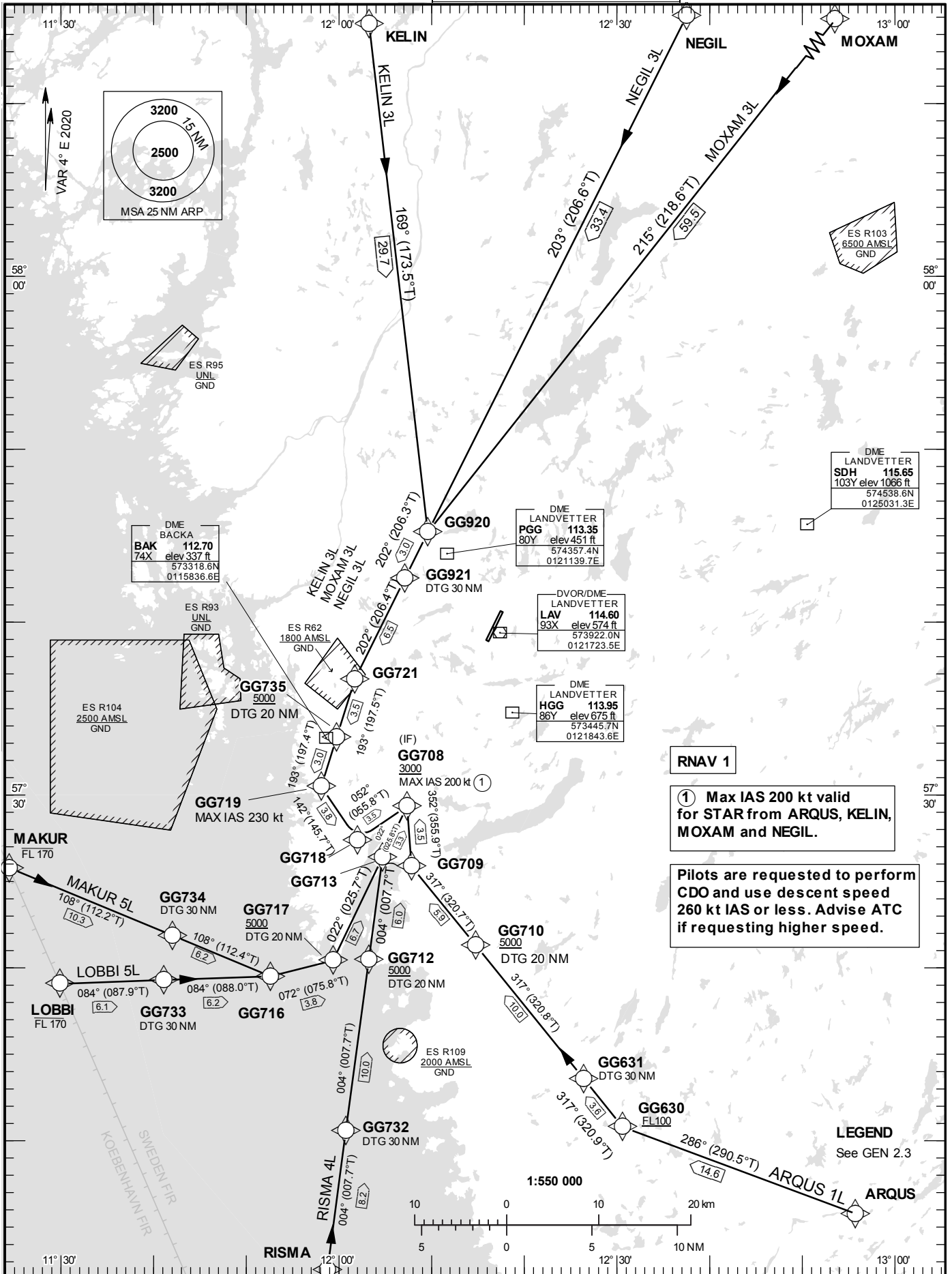


STANDARD INSTRUMENT
ARRIVAL CHART (STAR) -
ICAO

HGT and ALT in ft
BRG are MAG (True)
TA 5000 ft AMSL

| | |
|-------------------|---------|
| LANDVETTER TOWER | 118.605 |
| LANDVETTER ATIS | 118.380 |
| GÖTEBORG APPROACH | 124.680 |

RNAV (DME/DME or GNSS)
STAR RWY 03



DME BACKA
BAK 112.70
74X elev 337 ft
573318.6N
0115836.6E

DME LANDVETTER
PGG 113.35
80Y elev 451 ft
574357.4N
0121139.7E

DVOR/DME
LANDVETTER
LAV 114.60
93X elev 574 ft
573922.0N
0121723.5E

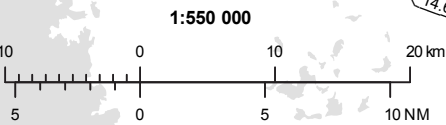
DME LANDVETTER
HGG 113.95
86Y elev 675 ft
573445.7N
0121843.6E

RNAV 1

① Max IAS 200 kt valid
for STAR from ARQUS, KELIN,
MOXAM and NEGIL.

Pilots are requested to perform
CDO and use descent speed
260 kt IAS or less. Advise ATC
if requesting higher speed.

LEGEND
See GEN 2.3



Prescribed Coding of RNAV STAR (DME/DME or GNSS) for RWY 03

REMARK

Following RNAV STARs are named CLOSED STARs leading to final approach.

RNAV STARs are based on RNAV 1.

Pilots are requested to perform CDO and use descent speed 260 kt IAS or less. Advise ATC if requesting higher speed.

Aircraft to GÖTEBORG/Landvetter shall not be operated at an airspeed of more than 250 kt IAS below FL100 unless otherwise instructed.

When established on ILS final approach track, maintain 160 kt IAS or more until passing OM, unless otherwise instructed. If unable, inform ATC immediately.

In case of radio communication failure, see AD 2.22 para 4.

ARQUS 1L

| Path Term | Waypoint Identifier | Fly-over | Course °M(°T) | Dist (NM) | Turn Dir | Rest Alts (ft AMSL) | Speed Limits (kt) | VPA/RDH (°/ft) | Rec Navaid | Navigation Specification |
|-----------|---------------------|----------|---------------|-----------|----------|---------------------|-------------------|----------------|------------|--------------------------|
| IF | ARQUS | - | - | - | - | - | - | - | - | RNAV 1 |
| TF | GG630 | - | 286°(290.5°) | 14.6 | - | +FL100 | - | - | - | RNAV 1 |
| TF | GG631 | - | 317°(320.9°) | 3.6 | - | - | - | - | - | RNAV 1 |
| TF | GG710 | - | 317°(320.8°) | 10.0 | - | +5000 | - | - | - | RNAV 1 |
| TF | GG709 | - | 317°(320.7°) | 5.9 | - | - | - | - | - | RNAV 1 |
| TF | GG708 | - | 352°(355.9°) | 3.5 | - | +3000 | -200 | - | - | RNAV 1 |

STAR instruction: ARQUS – GG630 (FL100 or above) – GG631 – GG710 (5000 ft or above) – GG709 – GG708 (3000 ft or above, max IAS 200kt).

KELIN 3L

| Path Term | Waypoint Identifier | Fly-over | Course °M(°T) | Dist (NM) | Turn Dir | Rest Alts (ft AMSL) | Speed Limits (kt) | VPA/RDH (°/ft) | Rec Navaid | Navigation Specification |
|-----------|---------------------|----------|---------------|-----------|----------|---------------------|-------------------|----------------|------------|--------------------------|
| IF | KELIN | - | - | - | - | - | - | - | - | RNAV 1 |
| TF | GG920 | - | 169°(173.5°) | 29.7 | - | - | - | - | - | RNAV 1 |
| TF | GG921 | - | 202°(206.3°) | 3.0 | - | - | - | - | - | RNAV 1 |
| TF | GG721 | - | 202°(206.4°) | 6.5 | - | - | - | - | - | RNAV 1 |
| TF | GG735 | - | 193°(197.5°) | 3.5 | - | +5000 | - | - | - | RNAV 1 |
| TF | GG719 | - | 193°(197.4°) | 3.0 | - | - | -230 | - | - | RNAV 1 |
| TF | GG718 | - | 142°(145.7°) | 3.8 | - | - | - | - | - | RNAV 1 |
| TF | GG708 | - | 052°(055.8°) | 3.5 | - | +3000 | -200 | - | - | RNAV 1 |

STAR instruction: KELIN – GG920 – GG921 – GG721 – GG735 (5000 ft or above) – GG719 (max IAS 230kt) – GG718 – GG708 (3000 ft or above, max IAS 200kt).

LOBBI 5L

| Path Term | Waypoint Identifier | Fly-over | Course °M(°T) | Dist (NM) | Turn Dir | Rest Alts (ft AMSL) | Speed Limits (kt) | VPA/RDH (°/ft) | Rec Navaid | Navigation Specification |
|-----------|---------------------|----------|---------------|-----------|----------|---------------------|-------------------|----------------|------------|--------------------------|
| IF | LOBBI | - | - | - | - | - FL170 | - | - | - | RNAV 1 |
| TF | GG733 | - | 084°(087.9°) | 6.1 | - | - | - | - | - | RNAV 1 |
| TF | GG716 | - | 084°(088.0°) | 6.2 | - | - | - | - | - | RNAV 1 |
| TF | GG717 | - | 072°(075.8°) | 3.8 | - | +5000 | - | - | - | RNAV 1 |
| TF | GG713 | - | 022°(025.7°) | 6.7 | - | - | - | - | - | RNAV 1 |
| TF | GG708 | - | 022°(025.8°) | 3.3 | - | +3000 | - | - | - | RNAV 1 |

STAR instruction: LOBBI (FL170 or below) – GG733 – GG716 – GG717 (5000 ft or above) – GG713 – GG708 (3000 ft or above).

MAKUR 5L

| Path Term | Waypoint Identifier | Fly-over | Course °M(°T) | Dist (NM) | Turn Dir | Rest Alts (ft AMSL) | Speed Limits (kt) | VPA/RDH (°/ft) | Rec Navaid | Navigation Specification |
|-----------|---------------------|----------|---------------|-----------|----------|---------------------|-------------------|----------------|------------|--------------------------|
| IF | MAKUR | - | - | - | - | - FL170 | - | - | - | RNAV 1 |
| TF | GG734 | - | 108°(112.2°) | 10.3 | - | - | - | - | - | RNAV 1 |
| TF | GG716 | - | 108°(112.4°) | 6.2 | - | - | - | - | - | RNAV 1 |
| TF | GG717 | - | 072°(075.8°) | 3.8 | - | +5000 | - | - | - | RNAV 1 |
| TF | GG713 | - | 022°(025.7°) | 6.7 | - | - | - | - | - | RNAV 1 |
| TF | GG708 | - | 022°(025.8°) | 3.3 | - | +3000 | - | - | - | RNAV 1 |

STAR instruction: MAKUR (FL170 or below) – GG734 – GG716 – GG717 (5000 ft or above) – GG713 – GG708 (3000 ft or above).

MOXAM 3L

| Path Term | Waypoint Identifier | Fly-over | Course °M(°T) | Dist (NM) | Turn Dir | Rest Alts (ft AMSL) | Speed Limits (kt) | VPA/RDH (°/ft) | Rec Navaid | Navigation Specification |
|-----------|---------------------|----------|---------------|-----------|----------|---------------------|-------------------|----------------|------------|--------------------------|
| IF | MOXAM | - | - | - | - | - | - | - | - | RNAV 1 |
| TF | GG920 | - | 215°(218.6°) | 59.5 | - | - | - | - | - | RNAV 1 |
| TF | GG921 | - | 202°(206.3°) | 3.0 | - | - | - | - | - | RNAV 1 |
| TF | GG721 | - | 202°(206.4°) | 6.5 | - | - | - | - | - | RNAV 1 |
| TF | GG735 | - | 193°(197.5°) | 3.5 | - | +5000 | - | - | - | RNAV 1 |
| TF | GG719 | - | 193°(197.4°) | 3.0 | - | - | - 230 | - | - | RNAV 1 |
| TF | GG718 | - | 142°(145.7°) | 3.8 | - | - | - | - | - | RNAV 1 |
| TF | GG708 | - | 052°(055.8°) | 3.5 | - | +3000 | - 200 | - | - | RNAV 1 |

STAR instruction: MOXAM – GG920 – GG921 – GG721 – GG735 (5000 ft or above) – GG719 (max IAS 230kt) – GG718 – GG708 (3000 ft or above, max IAS 200kt).

NEGIL 3L

| Path Term | Waypoint Identifier | Fly-over | Course °M(°T) | Dist (NM) | Turn Dir | Rest Alts (ft AMSL) | Speed Limits (kt) | VPA/RDH (°/ft) | Rec Navaid | Navigation Specification |
|-----------|---------------------|----------|---------------|-----------|----------|---------------------|-------------------|----------------|------------|--------------------------|
| IF | NEGIL | - | - | - | - | - | - | - | - | RNAV 1 |
| TF | GG920 | - | 203°(206.6°) | 33.4 | - | - | - | - | - | RNAV 1 |
| TF | GG921 | - | 202°(206.3°) | 3.0 | - | - | - | - | - | RNAV 1 |
| TF | GG721 | - | 202°(206.4°) | 6.5 | - | - | - | - | - | RNAV 1 |
| TF | GG735 | - | 193°(197.5°) | 3.5 | - | +5000 | - | - | - | RNAV 1 |
| TF | GG719 | - | 193°(197.4°) | 3.0 | - | - | - 230 | - | - | RNAV 1 |
| TF | GG718 | - | 142°(145.7°) | 3.8 | - | - | - | - | - | RNAV 1 |
| TF | GG708 | - | 052°(055.8°) | 3.5 | - | +3000 | - 200 | - | - | RNAV 1 |

STAR instruction: NEGIL – GG920 – GG921 – GG721 – GG735 (5000 ft or above) – GG719 (max IAS 230kt) – GG718 – GG708 (3000 ft or above, max IAS 200kt).

RISMA 4L

| Path Term | Waypoint Identifier | Fly-over | Course °M(°T) | Dist (NM) | Turn Dir | Rest Alts (ft AMSL) | Speed Limits (kt) | VPA/RDH (°/ft) | Rec Navaid | Navigation Specification |
|-----------|---------------------|----------|---------------|-----------|----------|---------------------|-------------------|----------------|------------|--------------------------|
| IF | RISMA | - | - | - | - | - | - | - | - | RNAV 1 |
| TF | GG732 | - | 004°(007.7°) | 8.2 | - | - | - | - | - | RNAV 1 |
| TF | GG712 | - | 004°(007.7°) | 10.0 | - | +5000 | - | - | - | RNAV 1 |
| TF | GG713 | - | 004°(007.7°) | 6.0 | - | - | - | - | - | RNAV 1 |
| TF | GG708 | - | 022°(025.8°) | 3.3 | - | +3000 | - | - | - | RNAV 1 |

STAR instruction: RISMA – GG732 – GG712 (5000 ft or above) – GG713 – GG708 (3000 ft or above).