

VISUAL APPROACH CHART - ICAO

1:250000



AD ELEV 69 FEET

ELEV and ALT in ft
HGT in ft above AD ELEV

TA 5000 AMSL

UPPSALA TOWER

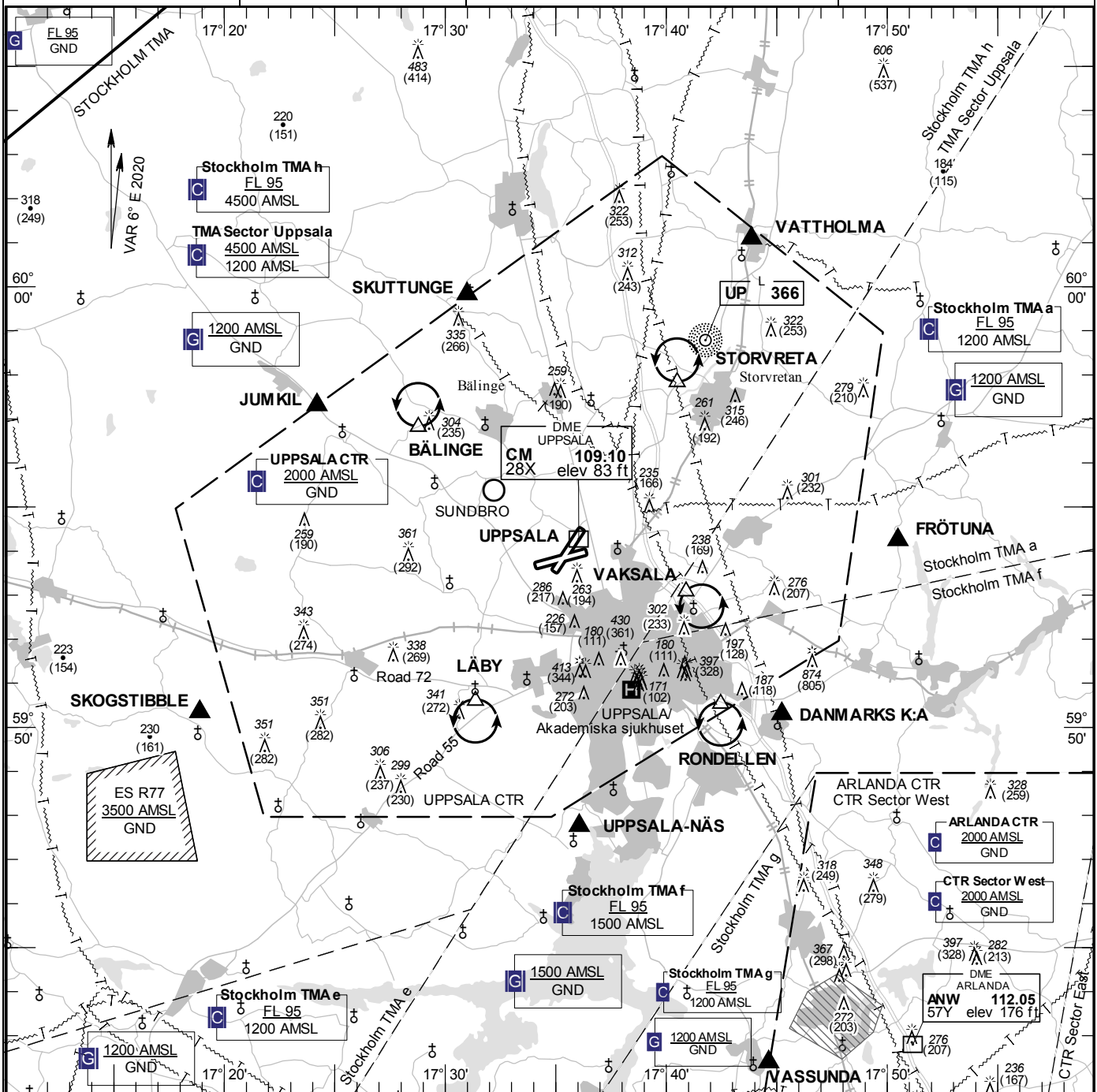
119.200

UPPSALA APPROACH

130.400

AD 2 ESCM 6-1

UPPSALA SWEDEN



Communication failure

Aircraft with communication failure is not allowed to land at Uppsala. In case of communication failure proceed to Sundbro airfield following procedure below

- 1 SQUAWK 7600
- 2 Enter CTR via SKUTTUNGE – BÄLINGE at or below 1000 ft AMSL to traffic circuit at SUNDBRO. Transmit blind your intentions.
- 3 Call Uppsala TWR after landing on +46 (0)18 19 60 72

Remark

Military airbase, PPR

RWY NR	THR ELEV	PAPI (MEHT)
08	42 ft	NIL
26	62 ft	NIL
03	60 ft	Left/2.86° (52 ft)
21	68.0 ft	Left/3.00° (55 ft)

Legend
See GEN 2.3

Entry / exit point

SKUTTUNGE	595949N 0173059E
FRÖTUNA	595414N 0175029E
DANMARKS K:A	595017N 0174514E
UPPSALA-NÄS	594745N 0173604E
SKOGSTIBBLE	595020N 0171853E
JUMKIL	595718N 0172412E
VATTHOLMA	600105N 0174352E

Holding

- BÄLINGE:** Hold west of Balinge, north of point 595648N 0172846E
- LÄBY:** Hold west of intersection of road 55 and 72, south of point 595035N 0173121E
- RONDELLEN:** Hold over roundabout south east of IKEA, south of point 595031N 0174227E
- STORVRETA:** Hold north west of Storvreta, north of point 595749N 0174029E
- VAKSALA:** Hold east of Vaksala church, south east of point 595302N 0174058E

LFV

CHANGE: Call sign, OBST.

AIRAC AMDT 3/2021 **17 JUN 2021**