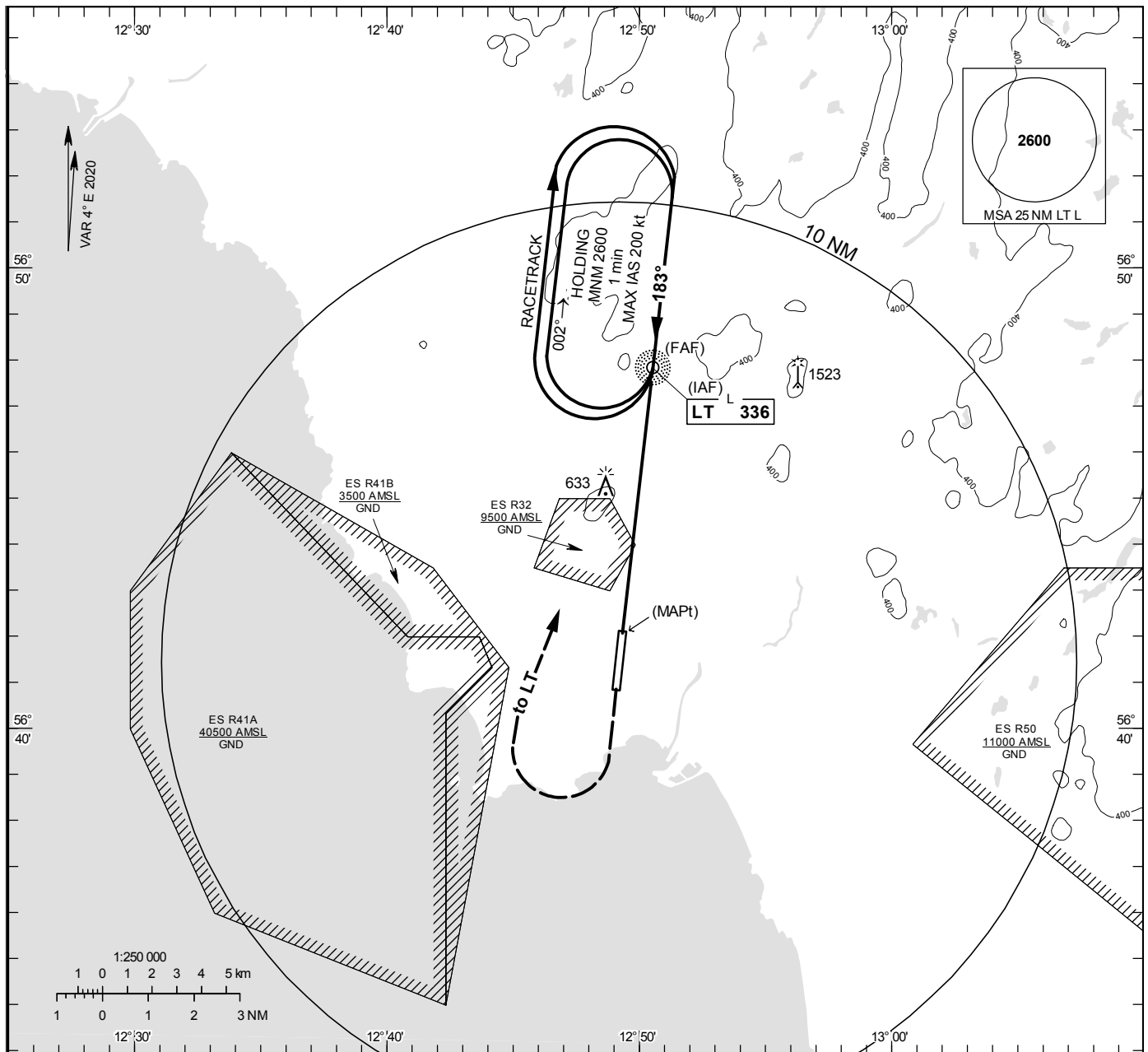


NDB RWY 19

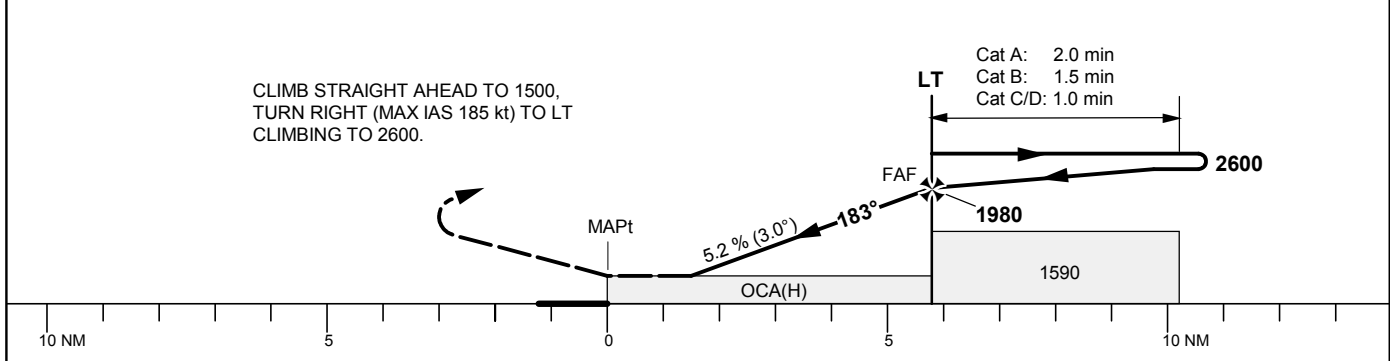
HALMSTAD TOWER	130.105
	135.055

THR ELEV 84.2 ft, AD ELEV 101 ft
OCH are related to THR.
Circling OCH are related to AD ELEV.
BRG are MAG
ALT, HGT and ELEV in ft.

INSTRUMENT
APPROACH
CHART – ICAO



TA 5000 ft AMSL Final APCH line 1° offset



Cat of ACFT	OCA (H)				Final approach							
	A	B	C	D	DME SVD NM	38	37	36	35	34		
Straight-in Approach	880 (800)				ALT	1730	1410	1090	770	450		
Circling	880(780)	880(780)	1030(930)	1030(930)	GS	kt	80	100	120	140	160	180
					Time	min:s	4:21	3:29	2:54	2:29	2:10	1:56
					Rate of descent	ft/min	425	530	640	745	850	955