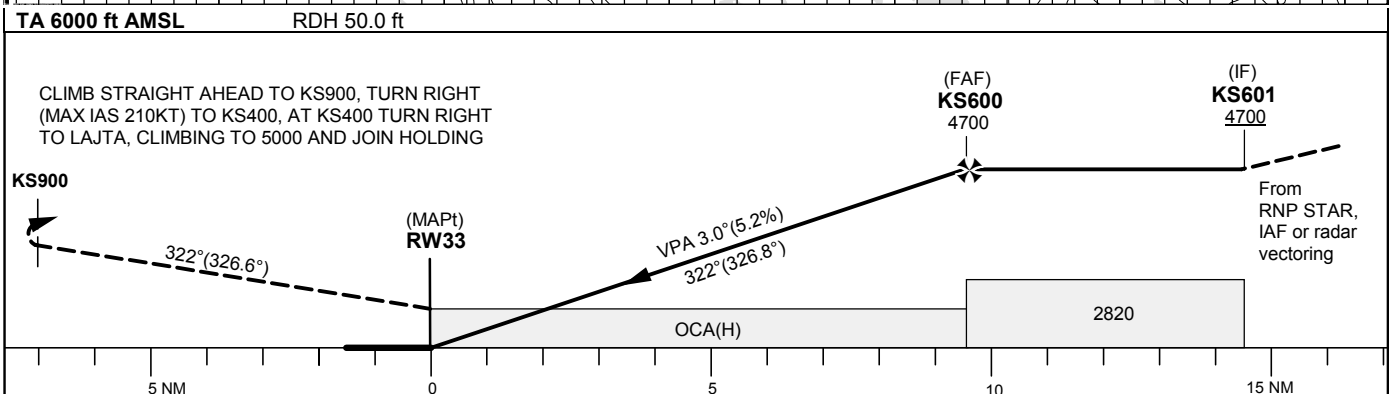
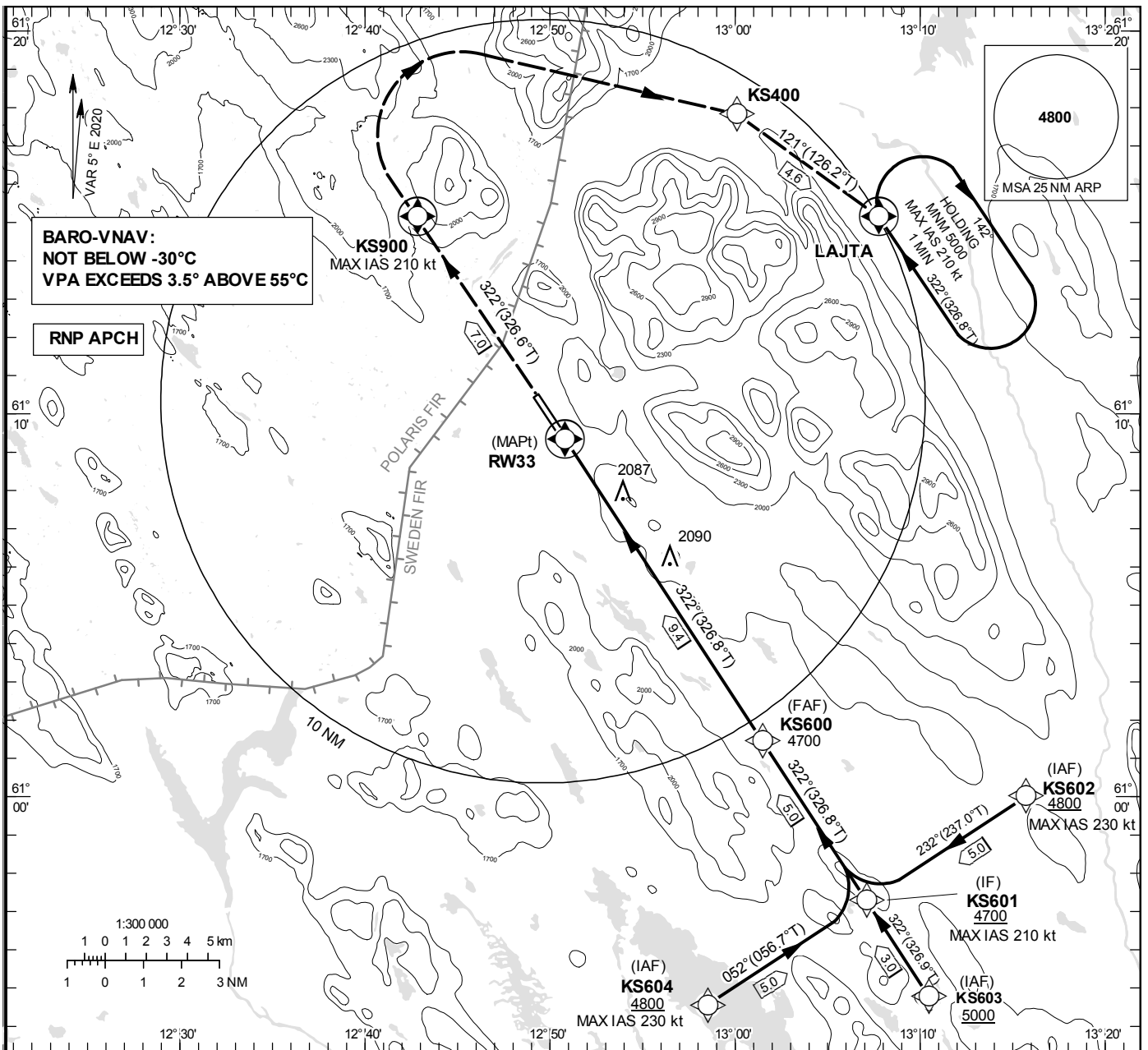


**INSTRUMENT APPROACH CHART – ICAO**  
**THR ELEV 1643.8 ft, AD ELEV 1649 ft**  
 OCH are related to THR.  
 BRG are MAG (True).  
 ALT, HGT and ELEV in ft.

SÄLEN TOWER 124.460

RNP RWY 33



Cat of ACFT	OCA (H)				Final approach	Distance FAF-MAPt 9.4 NM							
	A	B	C	D		Dist to RW33	9	8	7	6	5	4	3
LNAV/VNAV	2210(570)	2220(580)	2230(590)	2240(600)	ALT	4560	4240	3920	3600	3290	2970	2650	2330
LNAV	2340(700)				GS	kt	80	100	120	140	160	180	
					Rate of descent	ft/min	425	530	635	745	850	955	

## RNP RWY 33 via KS602

Path Desc	Waypoint Identifier	Fly-over	Course °M(°T)	Dist (NM)	Turn Dir	Altitude	Speed	VPA/RDH	Rec Navaid	Navigation Specification
IF	KS602	-	-	-	-	+4800	-230	-	-	RNP APCH
TF	KS601	-	232° (237.0°)	5.0	-	+4700	-	-	-	RNP APCH

## RNP RWY 33 via KS603

Path Desc	Waypoint Identifier	Fly-over	Course °M(°T)	Dist (NM)	Turn Dir	Altitude	Speed	VPA/RDH	Rec Navaid	Navigation Specification
IF	KS603	-	-	-	-	+5000	-	-	-	RNP APCH
TF	KS601	-	322° (326.9°)	3.0	-	+4700	-	-	-	RNP APCH

## RNP RWY 33 via KS604

Path Desc	Waypoint Identifier	Fly-over	Course °M(°T)	Dist (NM)	Turn Dir	Altitude	Speed	VPA/RDH	Rec Navaid	Navigation Specification
IF	KS604	-	-	-	-	+4800	-230	-	-	RNP APCH
TF	KS601	-	052° (056.7°)	5.0	-	+4700	-	-	-	RNP APCH

Path Desc	Waypoint Identifier	Fly-over	Course °M(°T)	Dist (NM)	Turn Dir	Altitude	Speed	VPA/RDH	Rec Navaid	Navigation Specification
IF	KS601	-	-	-	-	+4700	-210	-	-	RNP APCH
TF	KS600	-	322° (326.8°)	5.0	-	@4700	-	-	-	RNP APCH
TF	RW33	Y	322° (326.8°)	9.4	-	@1694	-	-3.0/50	-	RNP APCH
TF	KS900	Y	322° (326.6°)	7.0	-	-	-210	-	-	RNP APCH
DF	KS400	-	-	-	R	-	-210	-	-	RNP APCH
TF	LAJTA	-	121° (126.2°)	4.6	-	+5000	-210	-	-	RNP APCH

## ESKS Holding LAJTA

Path Desc	Waypoint Identifier	Fly-over	Course °M(°T)	Dist (NM)	Turn Dir	Altitude	Speed	VPA/RDH	Rec Navaid	Navigation Specification
HM	LAJTA	Y	322° (326.8°)	-	R	+5000	-210	-	-	RNP 1