

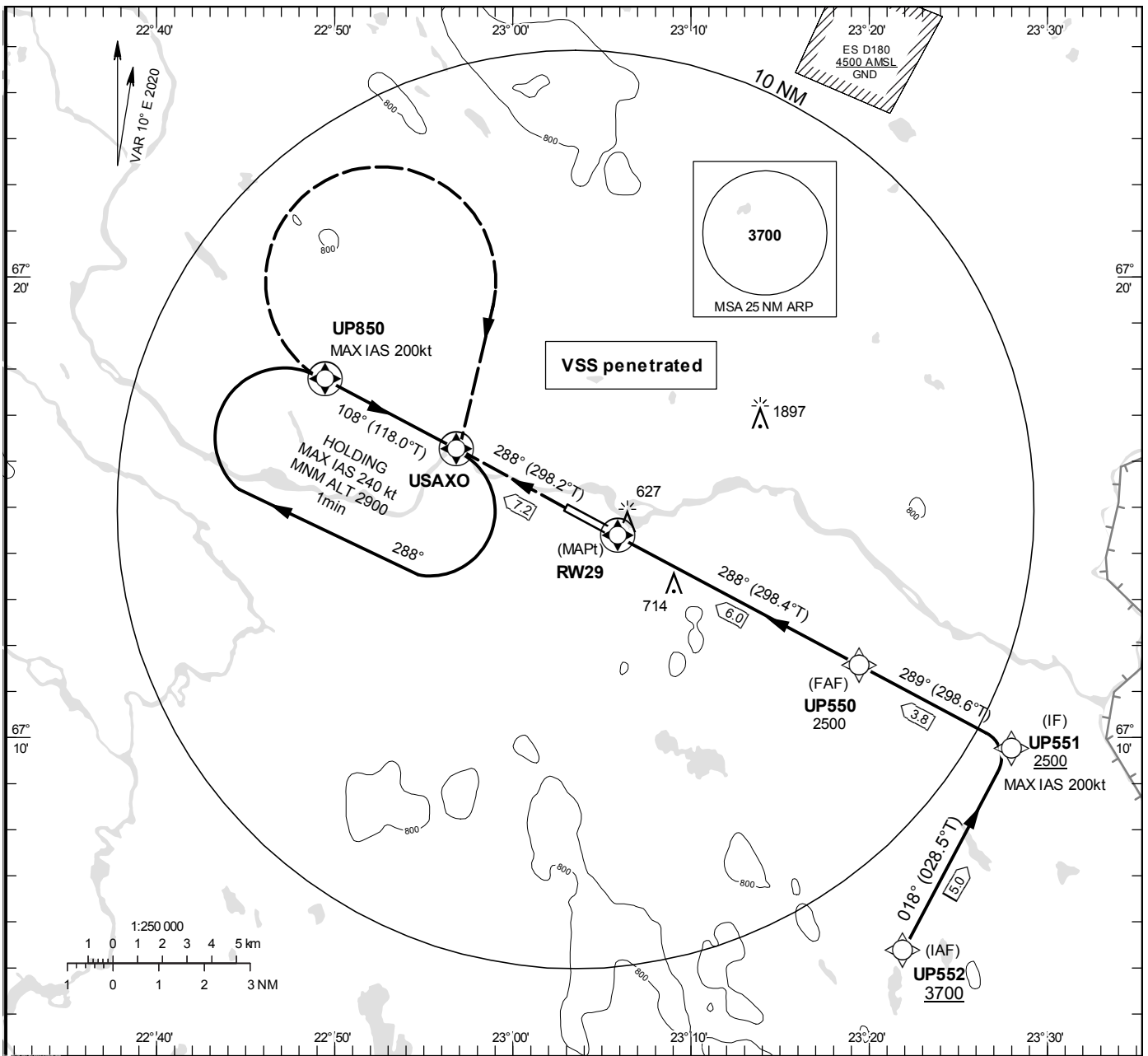
**INSTRUMENT
APPROACH
CHART – ICAO**

THR ELEV 541 ft, AD ELEV 542 ft
 OCH are related to THR.
 BRG are MAG (True).
 ALT, HGT and ELEV in ft.

PAJALA INFORMATION 118.380

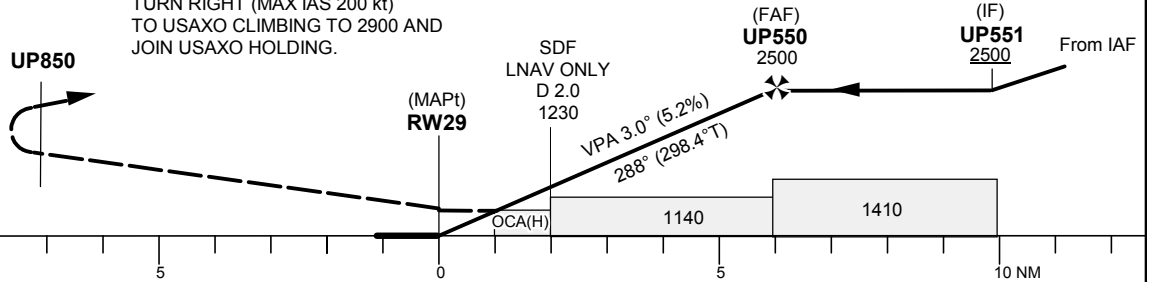
RNP RWY 29

EGNOS CH 72298 E 29A



TA 5000 ft AMSL RDH 50 ft

CLIMB STRAIGHT AHEAD TO UP850,
 TURN RIGHT (MAX IAS 200 kt)
 TO USAXO CLIMBING TO 2900 AND
 JOIN USAXO HOLDING.



Cat of ACFT	OCA (H)				Final approach		Distance FAF-MAPt 6.0 NM					
	A	B	C	D	Dist to RW29	ALT	5	4	3	2		
LPV	758(217)	770(229)	778(237)	789(248)	2180	1870	1550	1230				
LNAV	940(400)				GS	kt	80	100	120	140	160	180
					Rate of descent	ft/min	425	530	635	745	850	955

RNP RWY 29 via UP552

Path Desc	Waypoint Identifier	Fly-over	Course °M(°T)	Dist (NM)	Turn Dir	Altitude	Speed	VPA/RDH	Rec Navaid	Navigation Specification
IF	UP552	-	-	-	-	+3700	-	-	-	RNP APCH
TF	UP551	-	018° (028.5°)	5.0	-	+2500	-200	-	-	RNP APCH

Path Desc	Waypoint Identifier	Fly-over	Course °M(°T)	Dist (NM)	Turn Dir	Altitude	Speed	VPA/RDH	Rec Navaid	Navigation Specification
IF	UP551	-	-	-	-	+2500	-	-	-	RNP APCH
TF	UP550	-	289°(298.6°)	3.8	-	@2500	-	-	-	RNP APCH
TF	RW29	Y	288°(298.4°)	6.0	-	@591	-	-3.0/50	-	RNP APCH
TF	UP850	Y	288°(298.2°)	7.2	R	-	-200	-	-	RNP APCH
DF	USAXO	Y	-	-	-	-	-	-	-	RNP APCH
HM	USAXO	Y	108°(118.0°)	-	R	+2900	-240	-	-	RNAV 1

FAS Data Block

RNP RWY 29

Input data

Operation Type	0
SBAS Provider	1 (EGNOS)
Airport Identifier	ESUP
Runway	29
Runway Letter	0 (None)
Approach Performance Designator	0
Route Indicator	
Reference Path Data Selector	0
Reference Path Identifier	E29A
LTP/FTP Latitude	671423.1900N
LTP/FTP Longitude	0230553.4500E
LTP/FTP Ellipsoidal Height (metres)	189.6
FPAP Latitude	671458.2900N
Delta FPAP Latitude (seconds)	35.1000
FPAP Longitude	0230304.4700E
Delta FPAP Longitude (seconds)	-168.9800
Threshold Crossing Height	50.0
TCH Units Selector	0 (feet)
Glidepath Angle (degrees)	3.00
Course Width (metres)	105.00
Length Offset (metres)	0
HAL (metres)	40.0
VAL (metres)	50.0

Output data

Data Block	10 10 15 13 05 1D 00 00 01 39 32 05 AC 2E DB 1C 54 A4 E9 09 68 1B 38 12 01 D8 D7 FA F4 01 2C 01 64 00 C8 FA D8 BB BB 45
Calculated CRC Value	D8BBBB45

Required Additional Data

ICAO Code	ES
LTP/FTP Orthometric Height (metres)	165.0